

## Inauguration of Jeanette Best Gallery at Northwind Arts Center

*Community Figures* is an exhibit presented by Northwind Arts Center and Quimper Arts member artists, past and present, with exhibits of drawings, paintings, and sculpture. The exhibit commemorates community figures who founded and were instrumental in growing arts organizations in Port Townsend. It especially honors Jeanette Best, Miriam Lansdon, and Sylvia White as founders of Northwind Arts Center, and other active figures in the Port Townsend arts scene for more than 25 years. The exhibit will inaugurate the new Jeanette Best Gallery and the annual Founders Day celebration.

Northwind Arts Center is located at 701 Water Street, Port Townsend, 360-379-1086, [info@northwindarts.org](mailto:info@northwindarts.org). The exhibition runs through **February 24**. The opening reception and Art Walk will be held on **Saturday, February 2**, from 5:30 – 8:00 p.m. Exhibit hours are Wednesday through Monday, 11:30 a.m. – 5:30 p.m. Closed on Tuesdays.

To: Carol Galvan

12-1-18

Thank you so much  
for the generous donation  
of \$252 from you and  
the P.L. Artist League.

Our Food Bank is most  
grateful for your support.

Sincerely,  
Barathy Rath  
Volunteer, T-AFB





For information, see [gallery-9.com/or](http://gallery-9.com/or) call 360-379-8881.

• **Port Townsend Gallery** at 715 Water St., which will host artists Mike Biskup and Loran Scruggs during Gallery Walk.

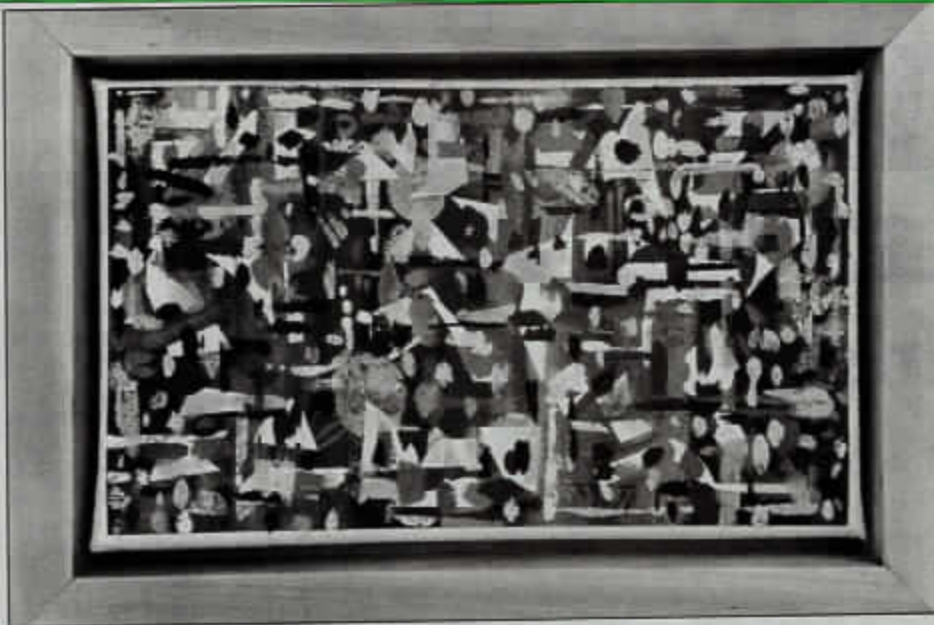
Biskup is a contemporary watercolor painter of imaginary landscapes and abstractions. He will feature a series of new all-natural watercolor paintings.

Recently, he's been working on creating visually compelling, completely non-toxic, archival work. He has been making his own paints from natural mineral earth pigments, gum Arabic and local honey and then sealing his paintings with beeswax.

Scruggs has been making works out of tin cans since 1991. Later, bottle caps became a large part of her work when she started making whistles.

The plaques started shortly after that, two-dimensional flat pieces created by cutting and nailing tin to wood.

For more information, call 360-379-8110 or go to [www.porttownsendgallery.com](http://www.porttownsendgallery.com).



A piece by Mike Biskup, titled "December."



Left: Port Townsend's Ragnar Kaasa listens to Port Ludlow's Doug Henderson explain how he gets his woodworking to shine.

Port Ludlow's Doug Henderson extolled a different virtue of beeswax as he spoke to Port Townsend's Ragnar Kaasa.

Henderson has been attending the Chimacum Arts and Crafts Fair "every year since it started," and regardless of whether he succeeds at selling any of his wares, he always enjoys meeting "the very nice people here, whom I enjoy talking with, and who seem to enjoy the quality of my workmanship."

"Beeswax gives the wood a great shine, and it's naturally anti-bacterial," Henderson said while he showed off his woodworking as part of his "Laminations in June" business. "Try not to combine too many coatings, though. And don't use varnish."

As a former farm boy from Vermont, Henderson has been working with wood since he was 10 years old "nearly 70 years ago," but only made it a paying proposition in 2005, a year after he moved to Jefferson County.

"We always built what we needed," Henderson said. "I was always around woodworkers. My father was a carpenter."



# 'Challenge' art, jewelry exhibit in Port Ludlow

PENINSULA DAILY NEWS

PORT LUDLOW — The Port Ludlow Art League will host an art reception Wednesday.

The Second Wednesday reception will be from 4 p.m. to 5 p.m. in the lobby of Port Ludlow Community Bank and next door at the Port Ludlow Art Gallery from 4 p.m. to 6 p.m.

The bank and the gallery are at the corner of Oak Bay Road and Osprey Ridge Drive.

The league's featured artists will attend.

The league will highlight the responses to a recent challenge derived from "The

Sound of Music," specifically Rodgers and Hammerstein's featured song, "My Favorite Things."

Participating artists met the challenge by creating artwork using their medium of choice, including watercolor, pastels, oils, pottery, acrylics, mixed media, fabric and photography.

The exhibit will be on display at the Port Ludlow Sound Community Bank in October.

The jeweler of the month is Mary Lynn Baker.

Baker has been involved in some form of art most of her life, according to a news release.

Over the years, she has

worked with fabric, paper, photography, paint, wax, metals and glass.

Encouraged by her husband, a few years ago Baker got her hands on a propane and oxygen tank, and coupled with a torch, started creating jewelry.

Initially, she worked mostly with silver and copper, but over time added stone and beads.

Her jewelry will be on display at the Port Ludlow Art Gallery in October.

The Photography Special Interest Group of the DigitalLife Club will display their artwork at the Port Ludlow Bay Club in October. The exhibit will

feature stunning photographs from forest flora to a Maui sunset.

The Photography Special Interest Group meets twice monthly and presents workshops to learn camera use, composition skills, and software for enhancing photos and creating video photo shows.

People of all skill levels are invited to participate in these workshops.

The Port Ludlow Bay Club is at 120 Spinnaker Place in Port Ludlow.

For more information, contact league President Claudia Wicks at 206-351-2414 or email her at claudiawicks@msn.com.

A6 TUESDAY, DECEMBER 11, 2018

## Port Ludlow Art League plans reception

PENINSULA DAILY NEWS

PORT LUDLOW — An art exhibit spotlighting Port Ludlow artists will be on display at the Sound Community Bank in December.

Participating artists will use a variety of mediums so no two pieces will be the same.

The public can meet the artists at the Port Ludlow Art League's Second Wednesday Reception next week in the lobby of the Port Ludlow Sound Community Bank from 4 p.m. to 5 p.m. and next door at the Port Ludlow Art League's Gallery from 4 p.m. to 6 p.m.

The bank and gallery are at the corner of Oak Bay Road and Osprey Ridge Drive.

Jeweler of the Month is Ginny Ford. She creates artisan jewelry in her design studio, Heavenly Mountain Studios, working primarily in sterling silver, silver, copper and brass.

Ford uses silver reticulation, a process by which metal is made to draw itself into ridges and valleys, creating a unique texture.

Steven H. Hammond's work is on view at the Port Ludlow Bay Club, 120 Spinnaker Place in Port Ludlow.

Hammond has been involved with art in one form or another all his life; from drawing and sculpture, to home design and commercial giftware. His work has been shown at shows in Arizona, Panama and Washington State.

After graduating from the University of Oregon, Hammond served as an Air Force fighter pilot before entering a career in corporate marketing. In 2013, he and his wife moved to Panama to experience small village living. Two years later, they moved to Port Ludlow.

Hammond's exhibit at the Port Ludlow Bay Club showcases scenes from Puget Sound.



# Port Ludlow artworks on display

Winter group show features jeweler, scenery

**CHRIS MCDANIEL**  
CMCDANIEL@PTLEADER.COM

The works of several Port Ludlow artists will be on display this month in the lobby of the Port Ludlow Sound Community Bank as part of the "Artist of the Month — Winter Group Show" organized by the Port Ludlow Art League (PLAL).

The bank and gallery are located at the corner of Oak Bay Road and Osprey Ridge Drive.

The featured artists will be present to meet the public during PLAL's Second Wednesday Reception from 4 to 6 p.m. on Dec. 12.

For more information, contact

League President Claudia Wicks at 206-351-2414 or by email at claudiawicks@msn.com.

## JEWELER OF THE MONTH

Ginny Ford, PLAL jeweler of the month, creates fine artisan jewelry at Heavenly Mountain Studios. She works primarily with sterling silver, silver, copper and brass, and she enhances the metals by creating textures and patinas using hammering, pressing, heating and chemicals.

Silver reticulation, Ford's favorite technique, is a process by which metal is made to draw itself into ridges and valleys, creating a unique texture, a press release stated. Unusual and colorful stones add depth and drama to her work.

Many pieces feature clasps and ear wires that are either hand-forged or made in Bali, Indonesia. Ford recently has been experimenting with transparent enamels over fine silver and stencils with enamels on copper.

## PORT LUDLOW BAY CLUB EXHIBITION

The work of Steven H. Hammond will be on display this month at the Port Ludlow Bay Club, 120 Spinnaker Place in Port Ludlow. Hammond's work features quintessential scenes from Puget Sound.

Hammond has been involved with art all his life, from drawing and sculpture to home design and commercial giftware. Hammond said he strives to create artwork that captures a viewer's memories, emotions and curiosity.

His work has been displayed at shows in Arizona, Panama and Washington state.

After he graduated from the University of Oregon, Hammond served as an Air Force fighter pilot before he entered a career in corporate marketing. In 2013, he and his wife moved to Panama to experience small village living. Two years later, they moved to Port Ludlow.



This silver piece by Ginny Ford, the Port Ludlow Art League December artist of the month, will be exhibited in the lobby of the Port Ludlow Sound Community Bank as part of the Winter Group Show. Courtesy, photo







January 2019

## Port Ludlow Art League

Artist of the Month – Winter Group Show



Grey Glacier Blue, by artist David Layton.

Continuing through January is the Port Ludlow Art League's winter show at Sound Community Bank. Participating artists use a variety of mediums so each piece is unique.

You can meet these talented artists at the Port Ludlow Art League's Second Wednesday Reception on **January 9** in the lobby of the Port Ludlow Sound Community Bank from 4:00 – 5:00 p.m. and next door at the Gallery from 4:00 – 6:00 p.m. The Bank and Gallery are located at the corner of Oak Bay Road and Osprey Ridge Drive. For more information, contact League President Carol Galvan at [carol.galvan@sbcglobal.net](mailto:carol.galvan@sbcglobal.net).

### Jeweler of the Month – Ginny Ford at the Port Ludlow Art League's Gallery

Ginny creates fine artisan jewelry in her design studio, Heavenly Mountain Studios. She works primarily in sterling silver, silver, copper, and brass, enhancing these metals by creating textures and patinas using hammering, pressing, heating, and chemicals.

Ginny's favorite technique, silver reticulation, is a process by which metal is made to draw itself into ridges and valleys, creating a unique texture. Unusual and colorful stones add depth and drama to her work. Many pieces feature clasps and ear wires that are either hand forged or made in Bali, Indonesia. Recently, Ginny has been



Pendant by Ginny Ford.

experimenting with transparent enamels over fine silver and stencils with enamels on copper. Ginny's one-of-a-kind jewelry will be featured at the Port Ludlow Art Gallery in January.

### Port Ludlow Bay Club Exhibition – Wanda Mawhinney



Holding the Shape of the Wind, by artist Wanda Mawhinney.

Submitted photos

Wanda began work as an elementary school teacher and later spent 20 years teaching yoga and practicing neuromuscular therapy. She and her husband came to Port Ludlow in 2005.

Wanda's love of color and texture enable her to create bold compositions. She intuitively lets her paintings evolve; building layers that create their own energy. Since moving to the Northwest from Arizona, her color palette has shifted from desert Southwest reds, oranges, and yellows to cool blues, grays, browns, and greens.

A few years ago, Wanda switched from acrylics to oils. Her newest passion is using oils and cold wax on board. Wanda enjoys not knowing how a painting is going to turn out. She either loves or hates the final piece. In the latter case, she simply paints over it and starts again. According to Wanda, "Some of those pieces turn out to be the best."

Wanda's artwork has appeared in numerous juried shows, and she has received many awards. Her artwork will be on display at the Port Ludlow Bay Club in January. The Bay Club is located at 120 Spinnaker Place in Port Ludlow.



## Port Ludlow Art League

### Artist of the Month – Gary Griswold at the Port Ludlow Sound Community Bank



China Clipper, by Gary Griswold.

Gary Griswold shares the wonder of the Pacific Northwest through his paintings, capturing the elements of nature for his audience. Griswold prefers painting outdoors in natural settings. He's inspired by wind, temperature, and the scents of nature. In addition to painting, Gary builds scale models of classic boats. His models have been on display in Port Townsend galleries, the Port Ludlow Inn, and the Port Ludlow Art Gallery.

It was a natural progression for Gary to use his artistic skills to publish five books featuring his watercolors. They are available at the Port Ludlow Art League Gallery next to Sound Community Bank.

Gary's artwork will be on display at the Sound Community Bank during the month of February. His show features a variety of new seascapes, his grandchild at the ocean, mountain vistas, and the flying boat from the Aero Museum auction. The bank is located at the corner of Oak Bay Road and Osprey Ridge Drive in Port Ludlow.

You can meet Gary at the Port Ludlow Art League's Second Wednesday Reception on **February 13** in the lobby of the Port Ludlow Sound Community Bank from 4:00 - 5:00 p.m. and next door at the Gallery from 4:00 p.m. - 6:00 p.m. For more information, contact Art League President Carol Galvan at [carol.galvan@sbcglobal.net](mailto:carol.galvan@sbcglobal.net).

### Jeweler of the Month – Georganne Muse at the Port Ludlow Art League's Gallery

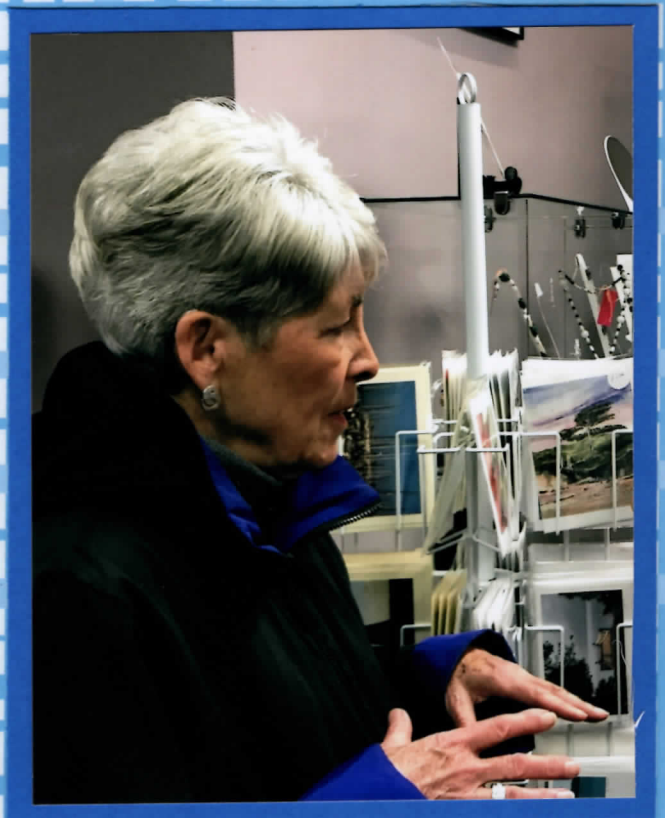
Georganne collected semi-precious stones for many years and one day decided it was time to do something with them. As a result, she purchased a book on creating artisan wire jewelry. She found the activity of turning colorful

stones into striking jewelry pieces came naturally. Aside from creating beautiful artwork, Georganne found that the repetitive movements of wire-wrapping put her in a pleasing Zen-like state, which is reflected in her jewelry.

Georganne's jewelry has been on display at the Port Ludlow Inn and the Port Ludlow Art League Gallery. Her current jewelry designs will be on display at the gallery in February.



Jewelry by Georganne Muse.  
Submitted photos









PLAL continued from previous page



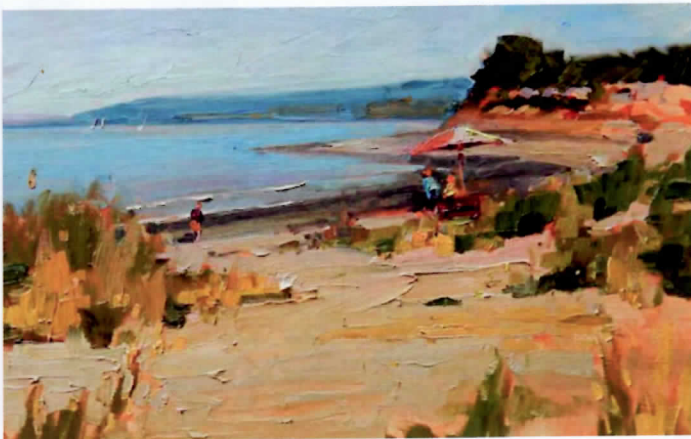
Ashore, by Fran Bodman.

Submitted photo

Although Fran enjoys working with pastels and acrylics, her latest passion is watercolors. Her artwork has been on display at the PLAL Gallery and the Port Ludlow Inn. Her watercolors will be on display at the Port Ludlow Bay Club in March which is located at 120 Spinnaker Place.

You can meet these talented artists at PLAL Second Wednesday Reception on **March 13** in the lobby of the Port Ludlow Sound Community Bank from 4:00 – 5:00 p.m. and next door at the Gallery from 4:00 – 6:00 p.m.. For more information, contact League President, Carol Galvan at 360-437-9801 or email her at [carol.galvan@sbcglobal.net](mailto:carol.galvan@sbcglobal.net).

## Meet Celebrated Artist Robin Weiss



Edmonds Beach Day, by Robin Weiss.

Submitted photo

The Port Ludlow Art League is pleased to welcome Robin Weiss to its monthly meeting on **Wednesday, March 20**, at 1:00 p.m. at the Port Ludlow Bay Club, which is located at 120 Spinnaker Place. Guests are welcome to attend for a fee of just \$5.

Growing up in Ohio, Robin began drawing at an early age. His first art teacher encouraged him to sketch and paint from life. Drawing and painting have always been his passion. Robin has been a full-time professional artist since 2008, painting

primarily in oils. He currently paints and teaches at Knowles Studio in Poulsbo.

Whether painting still life compositions or collecting material for natural sculptures, Robin is acutely aware of the elegance of everyday objects, people, and locations. He strives to reflect that beauty on canvas, using light and color to create a scene that captures the eye and draws in the viewer.

Robin's artwork has been featured at many venues, including the Bainbridge Arts and Crafts Gallery, the Cole Gallery in Edmonds, the Alki Arts Gallery in Seattle, the Oh Be Joyful Gallery in Crested Butte, Colorado, the Carrie Goller Gallery in Poulsbo, and the Scott Milo Gallery in Anacortes. You can find his online gallery at [robinweissfineart.com](http://robinweissfineart.com). For more information, contact Marti Mathis at 360-437-2704 or email her at [martimathis@wavecable.com](mailto:martimathis@wavecable.com).

Port Ludlow Art League  
**GALLERY**  
Next to Sound Community Bank  
Open: Tues Through Sat - Noon to 4 pm  
[www.portludlowart.com](http://www.portludlowart.com)



## Port Ludlow Art League

Artists of the Month – Larry Davidson and Carol Galvan



Gulls and Domes, artist Larry Davidson.

The essence of Larry Davidson's artwork blends photography with digital images. He uses the computer screen as a canvas and the mouse as a brush for his digital photograph manipulation. Using graphic software, Larry paints portions of each piece and then adds parts extracted from his photographs and watercolor paintings to create a final composition. Depending on the complexity of the image, final pieces often require from 12 to 80 hours to complete. Images are then printed on metal, canvas, or high luster art paper and matted/framed as the final painting.

Larry's artwork is ever evolving and often depicts an aspect of nature. The images, along with their contextual setting and lighting, are combined to create a particular mood, ambiance, and "sense of place" that is unique to each piece. Each image attempts to capture a fleeting moment to be visited in the here and now.



Waiting for Ice, by Carol Galvan.

Carol Galvan's camera is always within reach, whether at home or traveling abroad. She enjoys photographing nature, including landscapes, animals, and people. As a world traveler, Carol has captured the colorful cutthroat finch in East Africa, tuxedoed penguins in Antarctica, as well as a star fish near the Hood Canal Bridge. She doesn't digitally alter her photographs other than judicious cropping and enlarging.

Larry's and Carol's photographs will be on display at the Port Ludlow Sound Community Bank in March. A reception is set for 4:00 - 5:00 p.m., **Wednesday, March 13** in the lobby of the bank and 5:00 - 6:00 p.m. at the Port Ludlow Art League (PLAL) Gallery next door. The bank and gallery are located at the corner of Oak Bay Road and Osprey Ridge Drive in Port Ludlow.

### Jeweler of the Month – Janice Gruber at the PLAL's Gallery

As the daughter of a Pacific Northwest logger, Janice has lived most of her life in the rainy timber country of the great northwest. For 12 years, she traveled the waterways from Olympia to Juneau in search of Northwest Tribal art and fell in love with the natural beauty of Washington State. Her jewelry includes a wide range of elements, including pearls, stones, glass, paper, fabric, fine metals, and precious gems. Each of Janice's jewelry creations speaks to her soul at the time she was creating it. She lets each piece tell her when it's ready to be worn by someone who will love it as much as she loved creating it.



Bird Nest Necklace, by Janice Gruber.

Submitted photos

Janice attended the Northwest College of Art & Design and continues to study, taking various art workshops. The recipient of several awards, her work has been on display in private collections throughout the United States. Janice's jewelry designs will be on display at the Gallery in March.

### Port Ludlow Bay Club Exhibition – Fran Bodman

At an early age, Fran's parents gave her a paint-by-numbers kit, and soon her artwork appeared throughout the house. In high school, she majored in art and later attended the American Academy of Art, a commercial art school in downtown Chicago.

Fran's first commercial artist position was with R.H. Donnelley, the country's third largest print and online Yellow Pages publisher. She was responsible for assembling ads, including drawing and lettering by hand. When Fran started a family, she worked as a freelance artist, and subsequently pursued a career in sales and real estate. When she retired, Fran renewed her passion for art and began taking classes in various media, including stained glass, acrylics, and watercolor.

*continued on page 22*



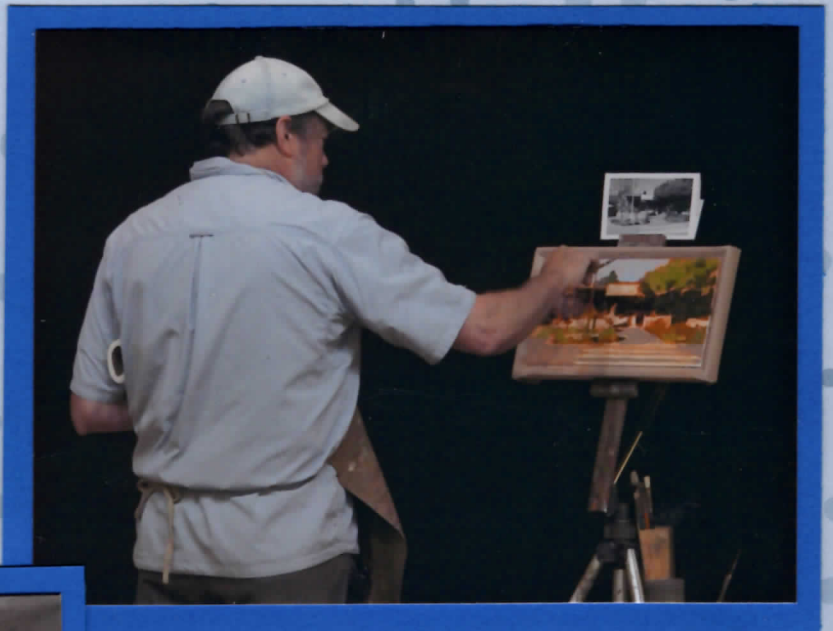
ARTISTS of the Month  
Larry Davidson  
Carol Galvan











On March 20, the League welcomed Robin Weiss to the general meeting. Robin is a Plein Air painter, who currently teaches at Knowles Studio in Poulsbo. His work can currently be seen in Seattle, Anacortes and Edmonds.

Robin captivated the audience, demonstrating his techniques for creating works of art from start to finish in 1 hour 15 minutes. Most interesting!







## Port Ludlow Art League

### Artist of the Month — Georganne Muse at the Sound Community Bank



Mystic Birds, artist Georganne Muse.  
Submitted photo

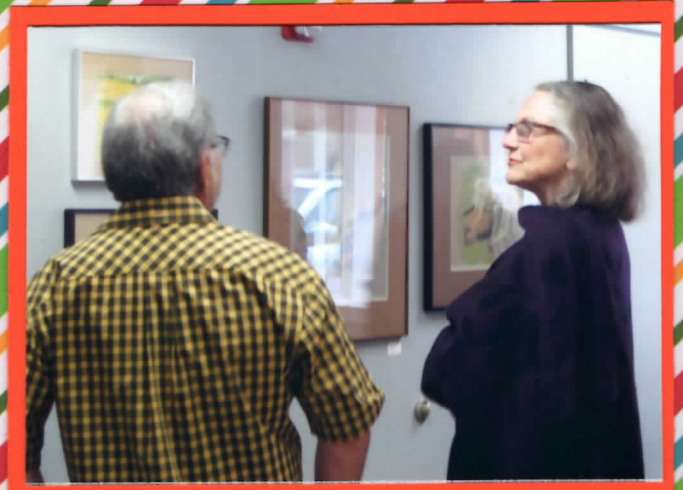
Georganne has been drawn to art since early childhood. For the past 25 years, she has taken a variety of art classes, using Conté crayons, pastels, and then oils. Recently, Georganne started experimenting with acrylics. Her paintings are inspired by the beauty of nature. “Art has enriched my life in so many ways, along with the friendships I’ve developed here in Port Ludlow,” she says.

Georganne’s artwork will be on display in April. A reception is set for 4:00 - 5:00 p.m., on **Wednesday, April 10**, in the lobby of the Sound Community Bank, and 5:00 - 6:00 p.m. at the Port Ludlow Art League (PLAL) Gallery next door. The bank and gallery are located at the corner of Oak Bay Road and Osprey Ridge Drive in Port Ludlow. For more information, contact League President Carol Galvan at 360-437-9801 or email her at [carol.galvan@sbeglobal.net](mailto:carol.galvan@sbeglobal.net).

### Jeweler of the Month – Judy Danberg at the PLAL Gallery

Operating under the premise that a girl can never have enough beads, Judy Danberg collected beads from all over the world, including Alaska, Mexico, France, Italy, Portugal, and Ireland. Some of the beads are new, while some are centuries old. Her unique jewelry designs will be on display at the gallery in April.

In her determination to take those beads out of their boxes and incorporate them into one-of-kind pieces, Judy started combining them with the Japanese braiding technique called *Kumihimo*, which means intersected threads and dates back as early as 8000 to 300 B.C. Over the centuries, many different pieces of equipment have been developed to speed up the process of hand braiding, but even with disks and braiding stands, the process is still hand done and involves hours of work to complete the braids.









# Art League to host monthly reception in Port Ludlow

PENINSULA DAILY NEWS

PORT LUDLOW — The Port Ludlow Artist League will host its monthly artists' reception from 4 p.m. to 6 p.m. Wednesday in the Sound Community Bank lobby and The Gallery at Osprey Ridge Drive and Oak Bay Road.

The Artist of the Month

for April is Georganne Muse of Port Ludlow.

Muse utilizes Conte' crayons, pastels and oils in her art. Recently, she began experimenting with acrylics.

Her paintings are inspired by nature.

The featured Jeweler of the Month is Judy Danberg. She has collected beads

from all over the world, including Alaska, Mexico, France, Italy, Portugal and Ireland.

Some of the beads are new; others are centuries old and Danberg incorporates them into one-of-a-kind pieces.

For the month of April, the Bay Club will exhibit the varied work of the Col-

lage Group.

Throughout the month of April, the League is exhibiting collage artwork created by a host of Olympic Peninsula artists at the Bay Club, 120 Spinnaker Place.

For more information, go to [www.portludlowart.org/artist-of-the-month](http://www.portludlowart.org/artist-of-the-month).

## Port Ludlow Art League's April Meeting

The Port Ludlow Art League is pleased to welcome Marti Mathis to its monthly program meeting on **Wednesday, April 17**, at 1:00 p.m. at the Port Ludlow Bay Club.

The watercolor paintings and drawings Marti creates are in a realistic style that comes to life with her fine technique and use of color. One of her favorite subjects is flowers, because

of their amazing colors and shapes along with the way the sunlight interacts with the patterns of shadows dancing on petals and leaves.

The focus of Marti's presentation will be on the importance of a well-dressed art piece, including how to prepare the back side of a painting for presentation in a gallery. After all, first impressions matter when it comes to artwork. How a painting is framed and hung on the wall can be just as important as the image on the front.

The Port Ludlow Bay Club is located at 120 Spinnaker Place. Guests are welcome to attend for a fee of just \$5. For more information, please contact Marti Mathis at 360-437-2704, or email her at [martimathis@wavecable.com](mailto:martimathis@wavecable.com).





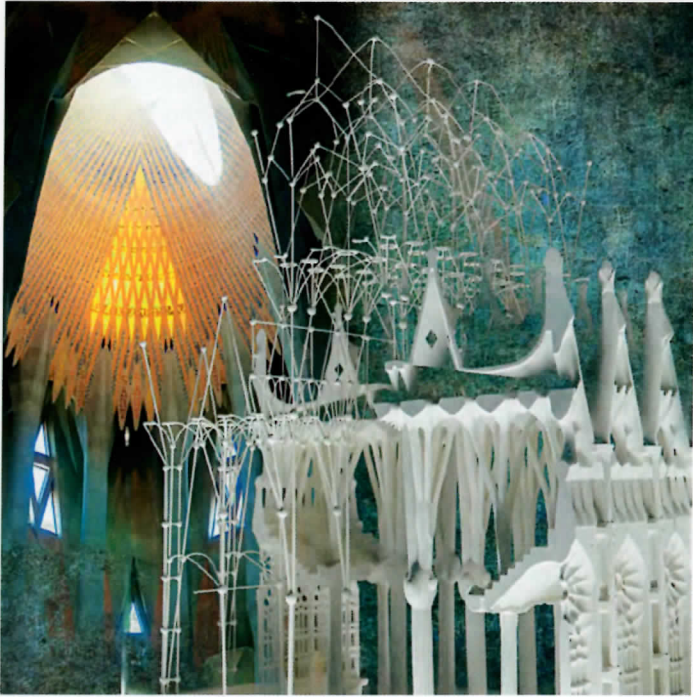






## Port Ludlow Art League

Artist of the Month — David Layton at the Sound Community Bank



*Flesh on the Bones, by artist David Layton.*

David's artwork reflects not only his 40-year career as an architect, when he designed high-rise office buildings, hotels, transit facilities, and airports all over the world, but also the inspiration he received from his father, an avid landscape photographer.

David's photographic interests vary from wildlife to portraits and street photography. His passion is summarized best by a challenge from photographer Art Wolfe, "Go where everyone else goes, but try to see the world differently."

He also enjoys exploring the artistic interpretation of his photography through digital collage and other mixed media techniques to enhance the viewer's connection with his artwork and to engage them through a sense of mystery and place.

The exhibit features a collection of photographs of the works of renowned Spanish architect Antoni Gaudi. His first exposure to Gaudi was in the 1960s while studying architectural history. Gaudi's delightful *Art Nouveau* playfulness and rebellion against the sterility of the industrial revolution made him one of David's favorites.

A reception for David is set for 4:00 - 5:00 p.m., **Wednesday, May 8**, in the lobby of the Sound Community Bank and 5:00 - 6:00 p.m. at the Port Ludlow Art League Gallery next door. The bank and gallery are located at the corner of Oak Bay Road and Osprey Ridge Drive in Port Ludlow. For more information, contact League President, Carol Galvan at 360-437-9801 or email her at [carol.galvan@sbcglobal.net](mailto:carol.galvan@sbcglobal.net).

## Jeweler of the Month – Maggie Smith at the Port Ludlow Art League's Gallery

Maggie Smith has been making beads and designing jewelry for over 25 years. She received her inspiration for lampworking after visiting Andrea Gurino, an award winning artist, at Andrea's Port Townsend art studio. After taking one of Andrea's classes, Maggie was hooked. Maggie then went on to hone her talent by attending art classes at the Pratt Fine Art Center in Seattle. She is currently a member of the International Glass Bead Society.

Many of Maggie's art pieces are a collaborative effort with her daughter, Shelby. In addition, Maggie works with other artists to design original beads and glass art. "When I work with glass, unexpected things just happen," Maggie said. When traveling, she often leaves some of her glass beads in rivers and lakes, or tucked into unobtrusive places, for others to find in the future.



*Bead necklace by Maggie Smith.*





## Port Ludlow Art League's May Meeting



Necklace by Sue Skelly.

Submitted photo

The Port Ludlow Art League is pleased to welcome Sue Skelly to its monthly program meeting at the Port Ludlow Bay Club on **Wednesday, May 15**, at 1:00 p.m.

Skelly's work has been featured in national garden books and magazines. She works with native Western Red Cedar and vintage buttons—sometimes combining both into some of her pieces. Although she creates garden structures as well as interior 3D sculptures and wall hangings, old buttons are by far a big part of her life-long collecting bug. It

was hard for her to part with them when she first began to create pieces to sell, but seeing other people connect to her button necklaces changed that.

Most necklaces are double sided and are made from her collection of materials from a bygone era, such as mother of pearl, horn, porcelain, bone, and vegetable ivory.. She sells her work at her studio in Poulsbo, by appointment, and during Art in the Woods studio tours. Her work is also available at the Front Street Gallery in Poulsbo and the RAGS show in Tacoma.

The Port Ludlow Bay Club is located at 120 Spinnaker Place. Guests are welcome to attend this program for a fee of just \$5. For more information, please contact Marti Mathias at 360-437-2704 or at [martimathias@wavecable.com](mailto:martimathias@wavecable.com).





## Port Ludlow Art League

### Artist of the Month — Susan Cavanaugh at the Sound Community Bank

Much of Susan's work is inspired by nature, connecting to her childhood spent outdoors in the Pacific Northwest. As an accomplished painter, Susan selects her medium to best suit the subject matter. Susan's watercolor paintings provide a calm respite. Her oil paintings use texture to sing and shout. Recently, she has been using fibers to create texture that excites. She enjoys the freedom of stitching colorful bits of fabric together to make free-form pieces and then cuts them up and rearranges them into blocks, sometimes incorporating reproductions of her paintings. This combination of materials is adding a whole new level of excitement to her creative process.



Cindy's Peony, by Susan Cavanaugh.

Susan's artwork will be on display at the Port Ludlow Sound Community Bank in June. A reception for her will be held from 4:00 to 5:00 p.m. on **Wednesday, June 12**, in the lobby of the bank, and from 5:00 - 6:00 p.m. at the Port Ludlow Art League Gallery next door. The bank and gallery are located at the corner of Oak Bay Road and Osprey Ridge Drive in Port Ludlow. For more information, contact Port Ludlow Art League President Carol Galvan at 360-437-9801, or email her at [carol.galvan@sbcglobal.net](mailto:carol.galvan@sbcglobal.net).



### Jeweler of the Month – Pamela Raine

Though Pamela is best known for her watercolors, mixed media, and ceramics, it was inevitable that her fascination with color would lead her to adding jewelry-making to her repertoire. Pamela states, "There is an infinite variety of materials to create jewelry, and the search for the perfect combination is half the fun." Pamela's jewelry designs will be on display at the Port Ludlow Art League's Gallery in June.



Jewelry by Pamela Raine.  
Submitted photos





# Port Ludlow Art League reception set Wednesday

PENINSULA DAILY NEWS

PORT LUDLOW — The Port Ludlow Art League will host an artists' reception from 4 p.m. to 6 p.m. Wednesday in the Sound Community Bank lobby and The Gallery.

Admission is free at both the bank lobby and gallery, which are at Osprey Ridge Drive and Oak Bay Road. The bank reception will be from 4 p.m. to 5 p.m. and

the gallery reception will run from 5 p.m. to 6 p.m.

On exhibit will be the work of the league's artist of the month, painter Susan Cavanaugh.

Cavanaugh selects her medium to best suit the subject matter, organizers said, adding that she works in watercolor and oil paint, sometimes using fibers to create texture.

Also on exhibit will be

the work of the league's jeweler of the month, Pamela Raine.

Best known for her watercolors, mixed media and ceramics, a fascination with color led Raine to adding jewelry making to her repertoire, organizers said.

"There is an infinite variety of materials to create jewelry and the search for the perfect combination is half the fun," Raine said.

Through the month of June, a Flora and Fauna Art Show will be on exhibit at the Port Ludlow Bay Club, 120 Spinnaker Place.

Exhibiting artists include Alan Ahtow, Bruce Corbridge, Kelly Hall, Rita Hollingsworth, Georganne Muse, Nancy Palsulich, Pamela Raine and Patricia Webber.

For information, go to [www.portludlowart.org](http://www.portludlowart.org).







### Port Ludlow Art League's June Program Meeting

The Port Ludlow Art League is pleased to welcome Evy Olsen Halvorsen to its monthly program meeting on **Wednesday, June 19**, at 1:00 p.m. at the Port Ludlow Bay Club.

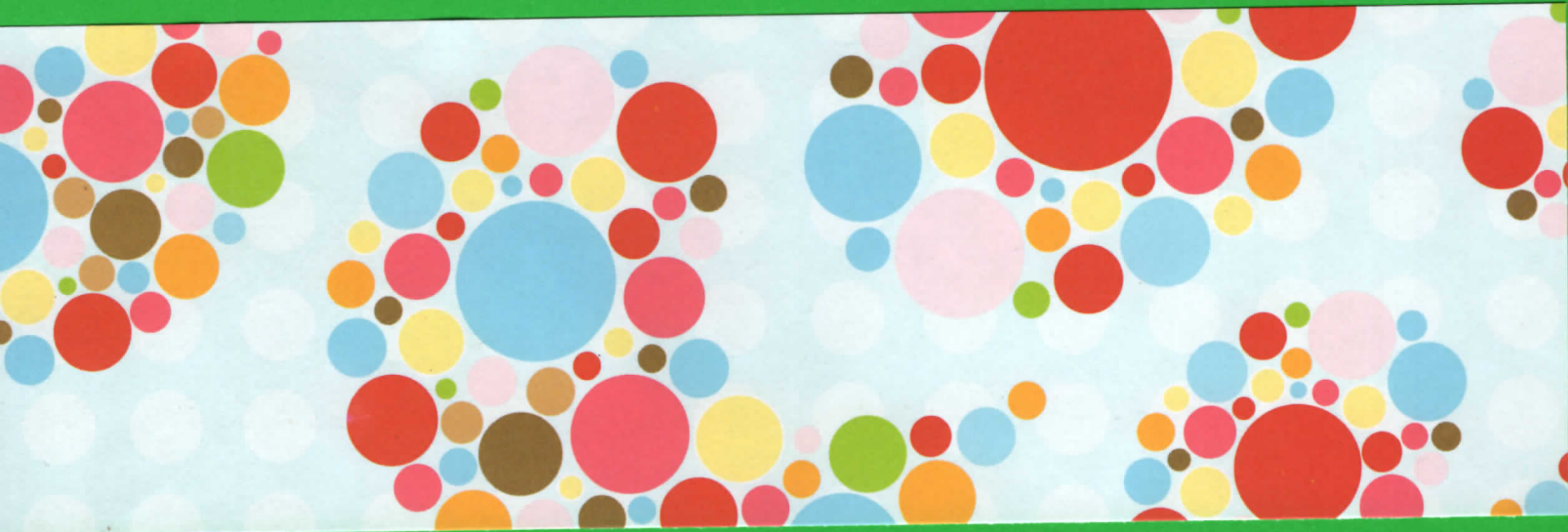
Evy primarily paints with beeswax in smaller sizes and with oils on larger surfaces. She states, "The images I aim to express are often narrative; finding a story in my head, I try to transfer some of the ideas to the surfaces for others to interpret as it suits them, to find their own meanings, and to make it personal for the viewer."

Originating in Greece around 500 B.C., encaustic (to burn in) is an ancient technique that is surprisingly more durable than oil paints. As an encaustic painter, Evy uses beeswax, a griddle, and a torch on wood with pure pigment and damar resin.

Evy has a Bachelor of Fine Arts from Cornish College of Fine Arts and participated in the Bainbridge Art Museum's "BIMA Bash! Friday Party and Silent Auction" and the Pratt Fine Art Auction. She has exhibited her artwork at numerous galleries and is currently represented by the Jeffrey Moose Gallery on Bainbridge Island.

The Port Ludlow Bay Club is located at 120 Spinnaker Place. Guests are welcome to attend for a fee of just \$5. For more information, please contact Marti Mathias at 360- 437-2704 or email her at [martimathis@wavecable.com](mailto:martimathis@wavecable.com).







# What Is Encaustic?



Fayum burial portrait, AD100-120

Encaustic is a Greek word meaning "to heat or burn in" (enkaustikos). Heat is used throughout the process, from melting the beeswax and resin to fusing the layers of wax. Encaustic consists of natural bees wax and dammar resin (crystallized tree sap). The medium can be used alone for its transparency or adhesive qualities or used pigmented. Pigments may be added to the medium, or purchased colored with traditional artist pigments. The medium is melted and applied with a brush or any tool the artist wishes to create from. Each layer is then reheated to fuse it to the previous layer.

## History of Encaustic

Encaustic painting is an ancient technique, dating back to the Greeks, who used wax to caulk ship hulls. Pigmenting the wax gave rise to the decorating of warships. The use of encaustic on panels rivaled the use of tempera in what are the earliest known portable easel paintings. Tempera was a faster, cheaper process. Encaustic was a slow, difficult technique, but the paint could be built up in relief, and the wax gave a rich optical effect to the pigment. These characteristics made the finished work startlingly life-like. Moreover, encaustic had far greater durability than tempera, which was vulnerable to moisture. Perhaps the best known of all encaustic work are the Fayum funeral portraits painted in the **1st through 3rd centuries A.D. by Greek painters in Egypt**. A portrait of the deceased painted either in the prime of life or after death, was placed over the person's mummy as a memorial. These are the only surviving encaustic works from ancient times. It is notable how fresh the color has remained due to the protection of the wax.

The 20th century has seen a rebirth of encaustic on a major scale. It is an irony of our modern age, with its emphases on advanced technology, that a painting technique as ancient and involved as encaustic should receive such widespread interest.

Earlier attempts to revive encaustic failed to solve the one problem that had made painting in encaustic so laborious – the melting of the wax. The availability of portable electric heating implements and the variety of tools made the use of encaustic more accessible.

## Care of Encaustic Art

**These paintings are extremely archival**, but as with any fine art, care should be given to them. There should be no fear of the work melting in normal household conditions. The wax and resin will not melt unless exposed to temperatures over 150 degrees Fahrenheit. (If it is that hot in your house you have bigger problems!) Leaving a painting in a car on a hot day would not be advisable or hanging a painting in front of a window with direct desert-like sun. Of course you should never put art in the direct sun. They are also sensitive to freezing cold temperatures. Over time the surface retains its gloss as the wax medium continues to cure and harden for up to 1-3 years.



# NORTHWIND **ARTS** CENTER

CONNECTING ARTS AND COMMUNITY

## Art in the Library

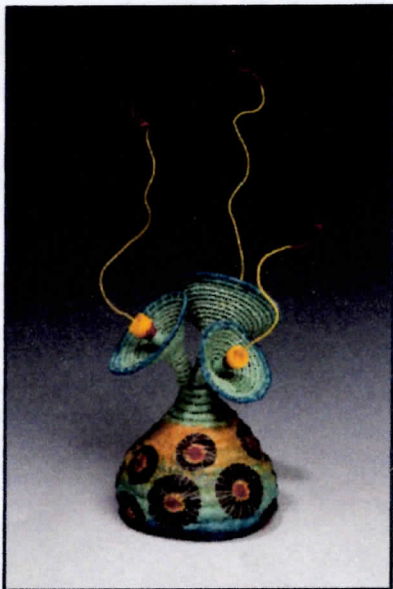
June 21 – October 17, 2019

Port Townsend Public Library

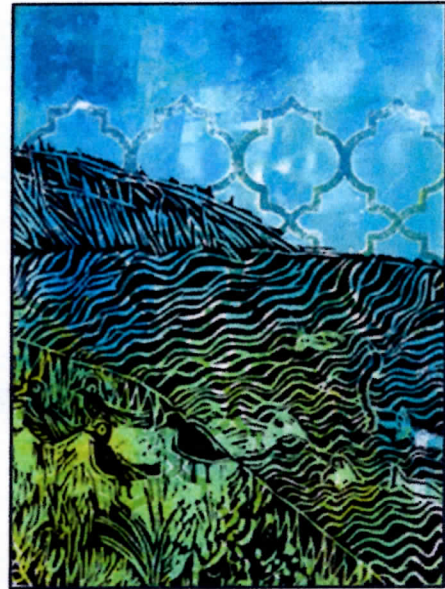
1220 Lawrence Street, Port Townsend

OPENING RECEPTION

Friday, June 21, 6:00 - 7:30 PM



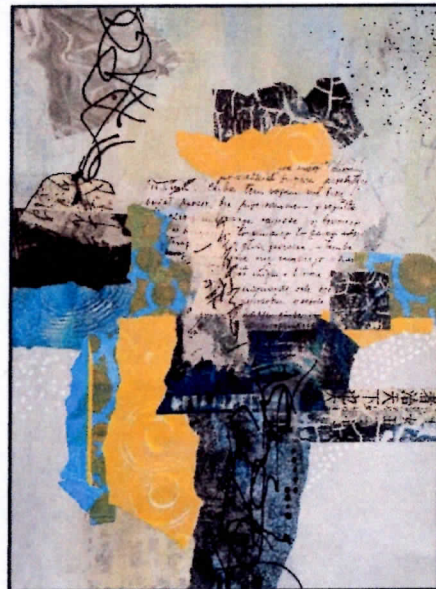
Danielle Bodine



Monica Gutierrez-Quarto



Steven H Hammond



Carol Nielsen

NORTHWIND  
**ARTS** CENTER  
CONNECTING ARTS AND COMMUNITY

[www.northwindarts.org](http://www.northwindarts.org)  
[info@northwindarts.org](mailto:info@northwindarts.org)



City of Port  
Townsend



August 2019

## Port Ludlow Art League

Artist of the Month — Janice Gruber



Blooms, by Janice Gruber.

As the daughter of a Pacific Northwest logger, Janice has lived most of her life in the rainy timber country of the great north-west. At one point, Janice spent 12 years traveling the waterways by boat from Olympia to Juneau in search of Northwest Tribal art. Along the way, she fell in love with the vibrant colors Washington State has to offer.

Janice states, "I become part of whatever subject matter I am working with. My true joy comes when I am immersed in a mix of vibrant colors and beautiful grey tones." Janice prefers oil for its buttery creaminess; wax, also known as encaustics, for the quickness with which it must be applied; and the tight and loose linework of watercolors.

Janice's artwork will be on display at the Port Ludlow Sound Community Bank in August. The exhibit will feature the impact of color in landscapes, seascapes, and florals.

A reception for Janice is set from 4:00 to 5:00 p.m., on **Wednesday, August 14**, in the lobby of the bank and from 5:00 to 6:00 p.m. at the Port Ludlow Art League Gallery next door. The bank and gallery are located at the corner of Oak Bay Road and Osprey Ridge Drive in Port Ludlow. For more information, contact League President, Carol Galvan at 360-437-9801 or email her at [carol.galvan@sbcglobal.net](mailto:carol.galvan@sbcglobal.net).

**Jeweler of the Month – Sharon Zabloutney**

Sharon Zabloutney spent many years teaching the branch of biology that deals with the structure, function, and modes of



Jewelry by Sharon Zabloutney.  
Submitted photos

microscopic organisms to college students. When Sharon retired, she began exploring drawing, watercolor, acrylic, and silver art.

While attending an art show some years ago, Sharon was drawn to a sculpture featuring beautiful glass beads, known as Baci artwork, including silver and enamel beads, zirconia, and Swarovski crystals.

Sharon discovered the lampwork process, which entails using a torch to heat glass on the end of a steel rod, while adding bits of colored beads and glass. For Sharon, the freedom to take raw materials and transform them into intricate, beautiful designs is the height of the creative process.

Sharon's jewelry will be on display at the Port Ludlow Art Gallery in August.

## Port Ludlow Art League's August Program

Each year the Port Ludlow Art League challenges members to create artwork in response to a particular theme. This year, Marti Mathis selected "The Art of Perspective" as the theme for the challenge. The August program meeting will feature Marti and Pamela Raine speaking on perspective so as to provide background for artists participating in this year's September challenge.

The **Wednesday, August 21**, meeting runs from 1:00 p.m. to 3:00 p.m. at the Port Ludlow Beach Club located at 121 Marina View Drive in Port Ludlow. Non-members are welcome to attend the meeting for a small fee of \$5. For more information, contact League President Carol Galvan at 360-437-9801 or email her at [carol.galvan@sbcglobal.net](mailto:carol.galvan@sbcglobal.net).

## Port Ludlow Resort Hosts Art Festival

Nestled on the shores of Puget Sound, the Port Ludlow Inn is a boutique waterfront inn inspired by New England's classic coastal summer homes. On **Saturday, August 31**, from 10:00 a.m. to 3:00 p.m., the Port Ludlow Inn will host the 2019 Port Ludlow Art Festival. You'll be able to browse unique works for sale by many local artists, including jewelry, watercolors, acrylics, wood-working, and ceramics while enjoying views of the Port Ludlow Marina and the Olympic Mountains.



Fun at the Art Festival.  
Submitted photo





Port Ludlow Art League



**GALLERY**

Next to Sound Community Bank  
Open: Tues Through Sat - Noon to 4 pm  
[www.portludlowart.com](http://www.portludlowart.com)



## Port Ludlow Art League

September 2019

Artist of the Month – Pamela Raine



*Nihon Rising, by Pamela Raine.*

Much of Pamela's artwork is inspired by her world travels. Recently, Pamela traveled to Japan. From women wearing colorful kimonos to scantily clad sumo wrestlers, where thousand-year-old temples compete for sunlight with tall skyscrapers, Pamela found that the ancient and the modern harmoniously coexist in Japan.

Pamela explored exquisite gardens as well a wide range of Japanese art, including wood blocks, pottery, ink painting and calligraphy, tie dying fabric, gold leaf screens, bamboo weaving, inlay wood,

and origami. She is delighted to share what she learned during her trip. Her exhibit includes original watercolor, acrylic, and pastel paintings, photographs, and mixed media as well as indigo tie dyed fabric, washi paper, and garments from her visit to Japan.

Pamela's exhibit will be on display at the Port Ludlow Sound Community Bank in September. A reception is set from 4:00 to 5:00 p.m. on **Wednesday, September 11**, in the lobby of the bank; and 5:00 – 6:00 p.m. at the Port Ludlow Art League Gallery next door. The bank and gallery are located at the corner of Oak Bay Road and Osprey Ridge Drive in Port Ludlow. For more information, contact League President Janice Gruber at 360-301-9840 or [JJGruber@cablespeed.com](mailto:JJGruber@cablespeed.com).

### Jeweler of the Month —

#### Linda Henderson

Linda has always had a keen eye for color and style. Although she enjoys searching for unique beads, crystals, and gemstones, she recently started experimenting with polymer clay. Manipulating polymer clay to accept any texture, assume any color, and create any size or shape enables



*Jewelry by Linda Henderson.*  
Submitted photos

Linda to explore an infinite variety of designs. Another benefit to using polymer clay is that it is much more lightweight than beads and gemstones. Linda continues to create one-of-a-kind pieces including stunning necklaces as well as silver earrings and macramé friendship bracelets.

Linda's latest creations will be on display at the Port Ludlow Art Gallery, located next to the Sound Community Bank, in September. For more information, contact League President Janice Gruber at 360-301-9840 or [JJGruber@cablespeed.com](mailto:JJGruber@cablespeed.com).

## Port Ludlow Art League's September Program

Each year the Port Ludlow Art League challenges their members to create artwork in response to a particular theme. This year, Marti Mathis selected "The Art of Perspective" as the theme for the challenge. At the August program meeting, members were encouraged to create what they thought was perspective using their medium of choice, including oils, acrylics, alcohol inks, pencils, inks, encaustics, paper, wood, or jewelry.

The September program meeting will present the members' artwork in response to the challenge. Members will vote for winners in three categories: favorite, most creative, and the perfect perspective.

The **Wednesday, September 18**, meeting runs from 1:00 p.m. to 3:00 p.m. at the Port Ludlow Beach Club. The Beach Club is located at 121 Marina View. Non-members are welcome to attend the meeting for a small fee of \$5. For more information, contact League President Janice Gruber at 360-301-9840 or [JJGruber@cablespeed.com](mailto:JJGruber@cablespeed.com).

## September Art at the Port Ludlow Bay Club

The photography of twins Dave and Tom Layton embodies an interest that spans a lifetime. Beginning at an early age, they were inspired by their father, an avid landscape photographer. They took advantage of their natural sibling rivalry to improve their work through competition. Over the years, their interests expanded to include wildlife, portraits, architecture, and street photography.

Dave's 40-year career as an architect influenced his interest in the built environment that is represented in his photography. Dave also explores the artistic interpretation of his photography through digital collage and other mixed-media techniques.

Tom's career as an educator in biology and math influenced his recent interest in exploring the exciting field of macro photography, the extreme close-up photography of very small subjects and living organisms, such as insects.

Dave's and Tom's passion for India was inspired by internationally known photographer Art Wolfe. During a recent Benaroya Hall presentation that featured Wolfe's images from India, Nepal, and Bhutan, Wolfe challenged the audience to travel to India and photograph the people and places of these ancient cultures. Responding to Wolfe's challenge, Dave and Tom collectively



*Art at the Bay Club continued from previous page*



Dancing Barefoot in the Sand, by Dave Layton.

Submitted photo

made eight trips to India, Nepal, Bhutan, and Sri Lanka. This show represents a culmination of those photographic journeys.

Dave's and Tom's artwork will be on display at the Port Ludlow Bay Club, 120 Spinnaker Place in September. For more information on art exhibits at the Bay Club, contact Alan Ahtow at [alanahtow@gmail.com](mailto:alanahtow@gmail.com).











# Port Ludlow Art League



## Artists of the Month – Port Ludlow Art League Challenge



Intersection, by JoAnna Caro.

Each year, the Port Ludlow Art League (PLAL) challenges their members to create artwork in response to a theme. This year’s theme is the “Art of Perspective.” Perspective can be the art of drawing objects on a 2D surface to give the impression of a 3D image, such as DaVinci’s *Last Supper*, or simply a different way of looking at things. Participating artists met the challenge by creating artwork using their medium of choice, including watercolor, pastels, oils, pottery, acrylics, mixed media, fabric, clay, and photography.

This dynamic and diverse exhibit will be on display at the Port Ludlow Sound Community Bank in October. A reception for the group is set for 4:00 - 5:00 p.m., **Wednesday, October 9**, in the lobby of the bank and 5:00 - 6:00 p.m. at the PLAL Gallery next door. The bank and gallery are located at the corner of Oak Bay Road and Osprey Ridge Drive in Port Ludlow. For more information, contact PLAL President, Janice Gruber at 360-301-9840 or [JJGruber@cablespeed.com](mailto:JJGruber@cablespeed.com).

## Jeweler of the Month – Mary Lynn Laker

When it comes to creating jewelry, Mary Lynn continues to experiment with new creations. Initially, she worked mostly with silver and copper, but



Necklace by Mary Lynn Laker.

Submitted photos

over time added stone and beads. As Jeweler of the Month, Mary Lynn crafted a collection of delicate chain, gems, and precious metal clay (PMC). PMC consists of very small particles of metal such as silver, gold, bronze, or copper mixed with an organic binder and water for use in making jewelry. When baked in a kiln, the binder burns away, leaving the pure sintered metal.

Mary Lynn’s jewelry will be on display at the PLAL Gallery in October. The Gallery is located at the corner of Oak Bay Road and Osprey Ridge Drive next to the Sound Community Bank. For more information, contact League President, Janice Gruber at 360-301-9840 or [JJGruber@cablespeed.com](mailto:JJGruber@cablespeed.com).

## Port Ludlow Art League’s October Program



Example of junk journaling.

Submitted photo

The Port Ludlow Art League is pleased to welcome Kim Owens to its monthly program meeting in October. Kim creates hand-sewn journals from old books, writing journals, sketchbooks, watercolor books, vintage ephemera, and bits of lace and fabric. She’ll be sharing her process and displaying examples of her handmade junk journals.

Like art journaling, there is no “one size fits all” definition for describing a junk journal. They can vary from person to person, though most junk journals share one primary characteristic: they’re often created with discovered and recycled materials used as a way to collect and record memories, thoughts, ideas, and inspiration.

The program meeting is scheduled for **Wednesday, October 16**, from 1:00 p.m. to 3:00 p.m. at the Port Ludlow Beach Club. The Beach Club is located at 121 Marina View Drive in Port Ludlow. Non-members are welcome to attend the meeting for a nominal fee of \$5. For more information, please contact League President, Janice Gruber at 360-301-9840 or [JJGruber@cablespeed.com](mailto:JJGruber@cablespeed.com).





Sponsored by the Port Ludlow Art League, 25 local artists and crafters will be filling the auditorium with one-of-a-kind items not found anywhere else. From cutting boards to wooden bowls, cards, handcrafted soaps, quilts, pottery, ornaments, paintings large and small, garden art, and hand-knit scarves, the variety is amazing and all packed into one room for shopping ease. This will be your chance to start or even finish your holiday shopping and have a good time mixing with your friends, neighbors, local artists, and crafters.



*A sample of items available at the PLAL Holiday Fair.*

Submitted photo

If you have any questions, or for more information, please contact Judy Danberg at 360-473-7999 (Yes, that's 473!) or [shortline@cablespeed.com](mailto:shortline@cablespeed.com). Hope to see you there.

## Photography at the Port Ludlow Bay Club

Members of Port Ludlow DigitalLife's Photography Special Interest Group will exhibit photos at the Bay Club throughout November. The exhibit theme will feature people, animals, and "life" as viewed through members' lenses.



*Birthday Boy, by Jane Herzog.*

Submitted photo

The Group presents two workshops each month to learn camera use, composition skills, and the use of software to enhance photos and create video photo shows. Our workshop formats are both instructional and open for questions and discussion. They are open to the entire Port Ludlow community. People of all skill levels are invited to come and participate in these workshops. Do you do things with Apple devices? We've got a workshop for that, too.

For a schedule of our workshops, visit [pldigitallife@live.org](mailto:pldigitallife@live.org).



## Art at the Port Ludlow Bay Club

The Photography Special Interest Group of the Digital Life Club will display their photography at the Port Ludlow Bay Club during the last two weeks of October and throughout November. This year, the exhibit will be divided into two segments: members' travels, landscapes, and "things"; and members' people, animals, and "life."

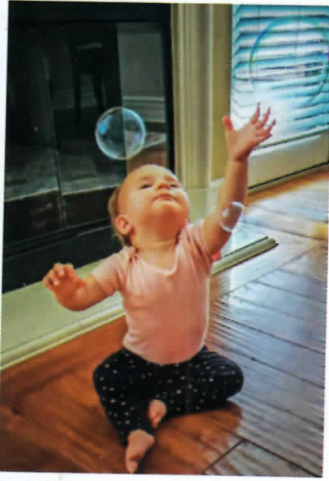
The Photography Special Interest Group meets twice monthly and presents workshops to learn camera use, composition skills, and software for enhancing photos and creating video photo shows. People of all skill levels are invited to participate in these workshops.



Snowy Bird Feeder.  
Photo by Jay Syverson

If you are interested in improving your photography skills, contact Bruce Breitenbach at 360-437-0571 or visit one of their workshops. For a schedule of meetings, visit [pldigitallife@live.org](mailto:pldigitallife@live.org).

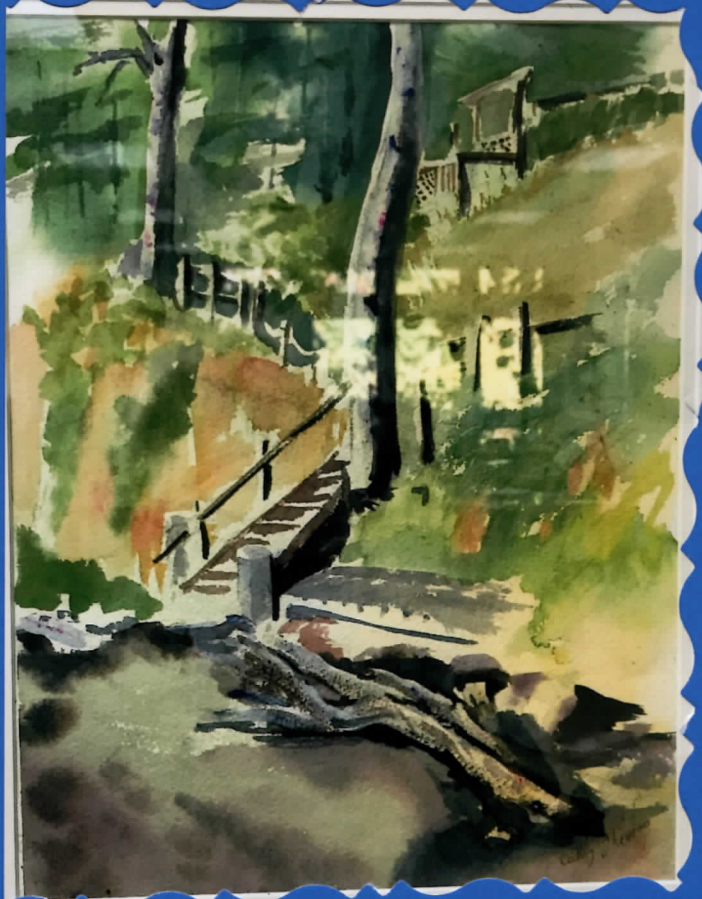
The Bay Club is located at 120 Spinnaker Place in Port Ludlow. For more information on exhibits at the Bay Club, contact Alan Ahtow at [alanahtow@gmail.com](mailto:alanahtow@gmail.com).



Bubbles.  
Photo by Jane Herzog











**Point of View**

The perspective of the climber is a key element in the art of climbing. It is a unique and often challenging experience that can be captured in a photograph. The climber's point of view is a perspective that is often overlooked in traditional photography. It is a perspective that is often overlooked in traditional photography. It is a perspective that is often overlooked in traditional photography.

Tommy L. L. L.









## Art at the Port Ludlow Bay Club

The Photography Special Interest Group of the Digital Life Club will display their photography at the Port Ludlow Bay Club during the last two weeks of October and throughout November. This year, the exhibit will be divided into two segments: members' travels, landscapes, and "things"; and members' people, animals, and "life."

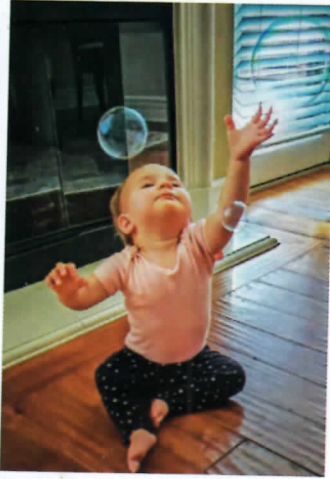
The Photography Special Interest Group meets twice monthly and presents workshops to learn camera use, composition skills, and software for enhancing photos and creating video photo shows. People of all skill levels are invited to participate in these workshops.



Snowy Bird Feeder.  
Photo by Jay Syverson

If you are interested in improving your photography skills, contact Bruce Breitenbach at 360-437-0571 or visit one of their workshops. For a schedule of meetings, visit [pldigitallife@live.org](mailto:pldigitallife@live.org).

The Bay Club is located at 120 Spinnaker Place in Port Ludlow. For more information on exhibits at the Bay Club, contact Alan Ahtow at [alanahtow@gmail.com](mailto:alanahtow@gmail.com).



Bubbles.  
Photo by Jane Herzog









## Baubles, Bangles & Beads

November 2019



Autumn Transitions, necklace by Jolie Maki.

Submitted photo

And all things bright and beautiful! The Port Ludlow Art League's jewelers are spotlighted for November's Artist of the Month show in the Sound Community Bank lobby. The art of adornment dates back thousands of years; these artists have brought that art form into modern times. Seven jewelers will share the limelight on the bank's gallery wall.

Jolie Maki specializes in manipulating metals including sterling silver, copper, bronze, and gold for her jewelry. Using ancient metal-smithing techniques combined with stone setting and wire manipulation, her jewelry reflects natural form and cultural symbolism.

Mary Lynn Laker has worked with fabric, mixed media, photography, paint, metal, glass, and wax, and loves the experimentation of using different mediums. Her jewelry often uses components she designs from precious metal clay (PMC) as focal points in her jewelry.

Ginny Ford experiments with techniques and different materials, including sterling silver, copper, enamels and PMC, and enameling. Her jewelry has an oriental flare which she markets under Heavenly Mountain Studios.

Pamela Raine, best known for her watercolors, mixed media, and ceramics, took the next step of her fascination with color by adding jewelry to her repertoire. She uses an infinite variety of materials to create jewelry in her search for the perfect combination.

Maggie Smith started making beads in the 90s after an interest in lamp work led to classes and an investment in equipment. Her love of color and a quest for new ways to manipulate glass results in unique beads and jewelry.

Linda Henderson enjoys searching for beads, crystals, and gemstones in her travels as well as learning new techniques to incorporate into jewelry. Recent experiments include polymer clay, leather, and macramé.

Mara Mauch specializes in glass, layered and slumped in a kiln, to form one-of-a-kind pieces for her jewelry. She uses combinations of precious glass and other metal elements to make brilliant, colorful, and wearable pieces.

Judy Danberg likes the look and feel of beads with a history; some of her treasures are over 300 years old. She gives those beads and components a central place in her modern jewelry.

The Baubles, Bangles, and Beads artist reception will be on **Wednesday, November 13**, from 4:00 - 5:00 p.m. in the Sound Community Bank Lobby, and from 4:00 - 6:00 p.m. at the Port Ludlow Art League Gallery next door. The bank and gallery are located at the corner of Oak Bay Road and Osprey Ridge Drive in Port Ludlow. For more information, contact League President Janice Gruber at 360-301-9840 or [JJGruber@cablespeed.com](mailto:JJGruber@cablespeed.com).

## Port Ludlow Art League's Jeweler of the Month - Jolie Maki

After a career in graphic design, Jolie Maki acquired a Bachelor of Fine Arts degree in metal arts from the University of Washington. She manipulates metal using metalsmithing techniques, such as forging, chasing/repoussé, stone setting, and wire wrapping. Metal as a medium provides an emphasis on structure that leads to innovative designs. Flat sheets of metal and lengths of wire have infinite possibilities.



Pebble on Abstract by Jolie Maki.

Submitted photo

Inspired by the falling leaves, Jolie crafted a series of leaf shapes fabricated out of bronze sheet metal, hand sawed, hammered, heated, and then manipulated into wearable pieces of art. She states, "I chose to use the warm colored bronze metal given its similar color tones of leaves. The result is an interesting dichotomy between the ridged permanence of metal and the fragile leaf structures."

Jolie's jewelry designs will be on display at the Port Ludlow Art League's Gallery in November. The Gallery is located at the corner of Oak Bay Road and Osprey Ridge Drive next to the Sound Community Bank. For more information, contact League President, Janice Gruber at 360-301-9840 or [JJGruber@cablespeed.com](mailto:JJGruber@cablespeed.com).



## Port Ludlow Art League's November Program



*Block print imagery.*

Submitted photo

The Art League is pleased to welcome Erica Applewhite of White Apple Studio to its monthly program meeting in November.

After studying etching, lithography, and silkscreen in college, Erica's current focus is on block print art. Working with a unique, soft, rubbery block material, Erica is able to create a linoleum-type print without using a printing press.

Erica's inspiration for her block print imagery comes from many sources, including majestic Pacific Northwest landscapes, ordinary and quirky objects, animals, and even food. Erica states, "I love the humor and simplicity found in such things as a pea pod, a duck's webbed foot, or a tomato."

White Apple Studio's block print art has been featured at the Seattle Art Museum Shop in downtown Seattle, Bainbridge Arts and Crafts, the Bainbridge Island Studio Tour, and the Wayzgoose Kitsap Arts Festival.

The program meeting is scheduled for **Wednesday, November 20**, from 1:00 to 3:00 p.m. at the Port Ludlow Beach Club. The Beach Club is located at 121 Marina View Drive in Port Ludlow. Non-members are welcome to attend the meeting for a nominal fee of \$5. For more information, please contact Art League President Janice Gruber at 360 301-9840 or [JJGruber@cablespeed.com](mailto:JJGruber@cablespeed.com).





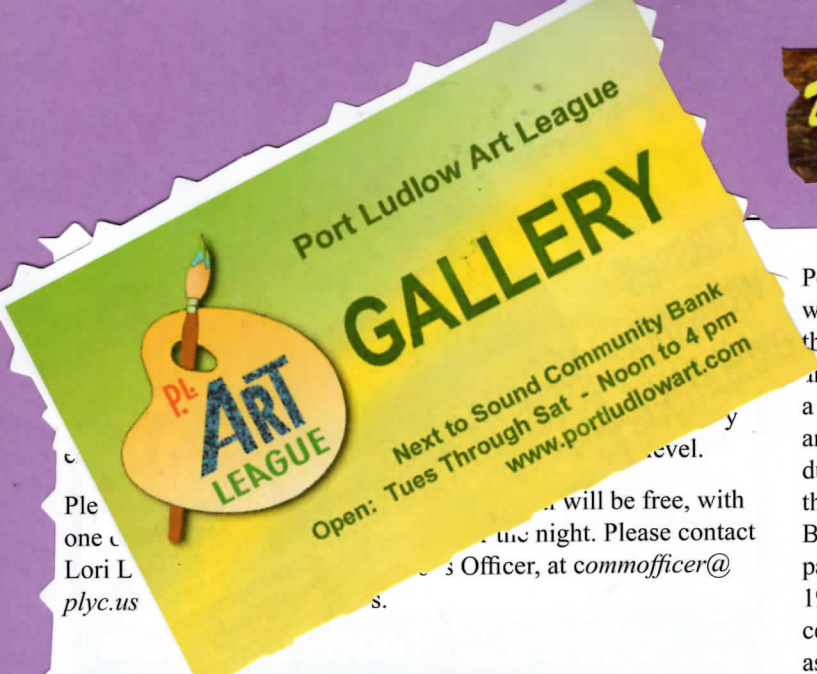








December 2019



## Chimacum Arts and Crafts Fair

by MJ McCulloch, Contributing Writer



Maggie and Shelby Smith.

For a win-win holiday shopping experience, be sure to mark your calendars for the 33rd annual Chimacum Arts and Crafts Fair on **Saturday and Sunday, December 7 and 8**, from 10:00 a.m. to 4:00 p.m. at Chimacum High School, located at 91 West Valley Road, in Chimacum. Not only will you find a vast selection of uniquely beautiful gifts, but you will also be supporting your community.

With over 100 juried local vendors, the Chimacum Arts and Crafts Fair is an iconic holiday shopping tradition. It is in fact the largest and longest running holiday festival in Jefferson County. As always, the event features distinctive, hand-crafted artwork, including jewelry, textiles, apparel, ceramics, candles, wood-work, leather works, artisan foods, and much more.

The Chimacum Arts and Crafts Fair showcases the spirit of East Jefferson County, raising money for Chimacum school programs, supporting the local Maker's Economy, and providing a marketplace for youth and nonprofit program fundraisers, whilst building community.

Port Ludlow is well represented at the Fair. Maggie and Shelby Smith, a dynamic mother and daughter duo who started the company Baci, have been participating since 1993. Shelby collected beads as a teenager, and the duo began to collaborate on jewelry-making after Maggie learned the art of lamp working, the making of original beads using a propane torch and glass from Italy.



Jewelry by Maggie Smith.

Photos by Jay Syverson

Doug and Linda Henderson have been exhibiting since 2006.

Doug (Laminations in Time) has been working with wood since he was a child, and in retirement continues to focus on artistic creations that are useful as well as aesthetically pleasing. Linda began attending Fairs with Doug and became inspired to learn jewelry making with an emphasis on innovative ways to combine gemstones, gold, and silver in wearable pieces.



Ceramics by Pamela Raine

Submitted photo

Pamela Raine is our newcomer this year. As a mixed media artist, she breathes new life into the age-old art of ceramics. Experimenting with different techniques and glazes, she designs simple as well as intricate pieces.

Also, many Chimacum High School student clubs

participate in the fundraising aspect of the Chimacum Arts and Crafts Fair. The Interact Club, sponsored by the East Jefferson County Rotary Club, will facilitate photo opportunities with Santa Claus. The Horticulture Club will be making holiday arrangements for sale this year. And the Drama Club will run the concessions.



## Port Ludlow Artists of the Month - Winter Group Show



Winter Bliss, by Alice Thuring.

Submitted photo

A salon-style art exhibit, spotlighting local Port Ludlow artists, will be on display at the Sound Community Bank in December. Participating artists used a variety of mediums to reflect on winter, and each piece is unique.

You can meet these talented artists at the Port Ludlow Art League's Second Wednesday Reception on **Wednesday, December 11**, from 4:00 to 5:00 p.m. in the Sound Community Bank lobby, and from 4:00 to 6:00 p.m. at the Port Ludlow Art League Gallery, next door. The bank and gallery are located at the corner of Oak Bay Road and Osprey Ridge Drive in Port Ludlow. For more information, contact League President Janice Gruber at 360-301-9840 or [JJGruber@cablespeed.com](mailto:JJGruber@cablespeed.com).

## Jeweler of the Month at the Port Ludlow Art League's Gallery

Li Ding-Salopek has been creating custom jewelry for many years. She is able to visualize a concept and turn it into an exquisite piece of jewelry. Li believes jewelry making is a creative medium with emotion and passion.

Li uses only the highest quality of silversmithing in her jewelry. She also enjoys incorporating new skills and techniques into her designs. For example, Li has recently developed a new method of soldering that creates branches of trees in sterling silver without the use of a cast model. In addition to her silversmithing, she hand grinds jade and other precious minerals into unique shapes specific to each of her jewelry pieces.



Necklace by Li Ding-Salopek.

Submitted photo

Each piece of jewelry takes a considerable amount of time to evolve from concept to finished product, often taking weeks to complete. Li encourages customers to bring their own story when viewing her jewelry so that they can make an intimate connection with her designs.

Li's latest jewelry designs will be on display at the Port Ludlow Art Gallery in December. The gallery is located at the corner of Oak Bay Road and Osprey Ridge Drive in Port Ludlow. For more information, contact League President Janice Gruber at 360-301-9840 or [JJGruber@cablespeed.com](mailto:JJGruber@cablespeed.com).

## December PLAL Programs Meeting - Art Journaling



The Port Ludlow Art League (PLAL) is pleased to offer a workshop on Art Journaling for the **Wednesday, December 18**, 1:00 p.m. program meeting at the Port Ludlow Beach Club, 121 Marina View Drive.

An art journal is a visual and sometimes written record of creative thoughts and ideas. Art journals may combine art and writing to create finished pages. Every imaginable style, media, and technique is used by art journalists. When it comes to the types of work represented in art journals, there really aren't any rules. Each book is as unique as the person who creates it.

Art journals may include recycled materials, scraps of paper, or collectible memorabilia, combined with mixed media, such as acrylic paints, gesso, watercolors, and stamps so as to record feelings, play with ideas, and get inspiration.

Attendees will receive mixed media sketchbooks and materials to guide them through the process. The meeting's facilitator, Artist Pamela Raine states, "I'd like to encourage everyone to keep an art journal, if only for the joy of creating each and every day."

*continued on next page*







*Gallery continued from previous page*

are also displaying hand crafted jewelry are Mara Mauch, Katie Jablonski, Linda Henderson, Judy Danburg, Li Ding-Salapek, and Ginny Ford.

The invitation is out, to friends and family, to swing by the Port Ludlow Art League Gallery and check out all the lovely, inspiring, and breathtaking artwork created by the very talented members of the Port Ludlow Art League. You'll be glad you did!

For more information, please contact league president, Janice Gruber, at 360-301-9840 or [JJGruber@cablespeed.com](mailto:JJGruber@cablespeed.com).

## Art League Artists Display Locally

The Port Ludlow Art League is pleased to announce new art shows at the following locations:

Port Ludlow Post Office - Judy Oberto

Active Life Physical Therapy - Fran Bodman

Port Ludlow Beach Club - Susan Cavanaugh

Coldwell Banker Realty - Gail Larson & Donna Thompson

Olympic Visitor Center - Mary Lynn Laker

These artists will be displaying their artwork at these locations November through January. For more information, contact Pamela Raine at [pamela\\_raine@hotmail.com](mailto:pamela_raine@hotmail.com).



"Frosty"  
Acrylic/Photo on Canvas  
Claudia Wicks



"Winter Wonder"  
Acrylic/Photo on Canvas  
Claudia Wicks





















