

Members of the Port Suddan
Artist League ~

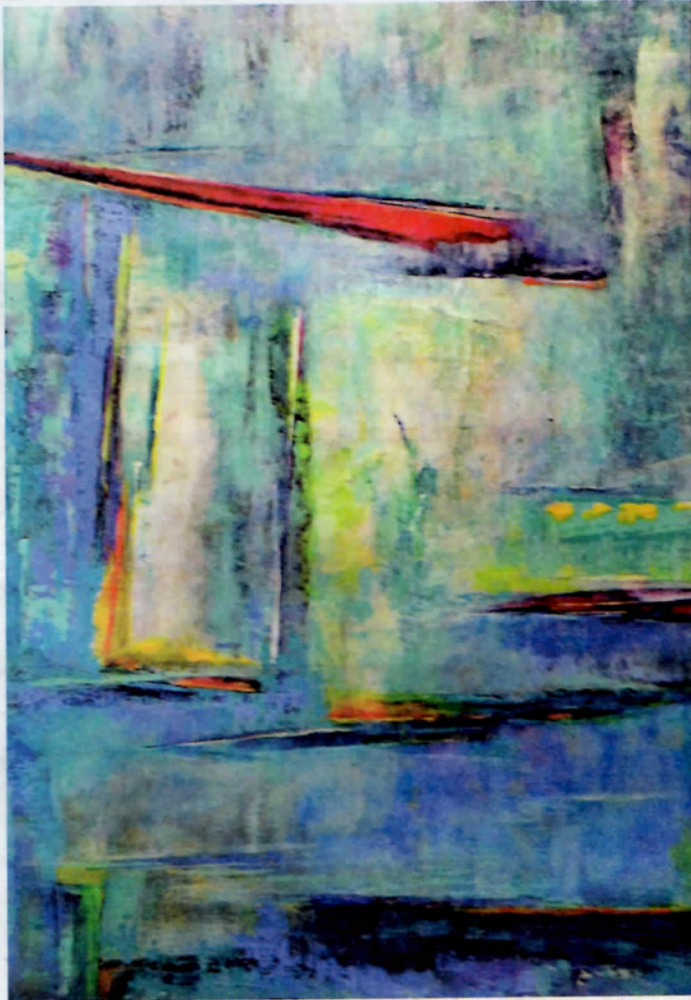
Thank you so much
for the gift certificates and
the delicious chocolates!

Sharan

Jenar

The Art of Abstraction

Abstract art departs from familiar, recognizable images like a landscape, still life, or portrait painting, but rather than lacking reality, the art expands upon it. Some abstract art is representational in that there are identifiable images, while some are purely subjective – splashes of color, geometric designs, or symbols. To fully enjoy abstract art, the focus should be less on trying to figure out what the painting “looks like” and more on exploring and enjoying the emotions, memories, or meaning that may emerge from the canvas. Abstract art is free to depict what may lie beneath the surface, or beyond what is apparent in a recognizable image, to create a visual representation of non-visual senses, or to challenge and push visual boundaries of perception.



Reflections, artist Patricia Webber.



Playfields, artist Jackie VanNoy.

Submitted photos

Krieg, Gail Larson, Wanda Mawhinney, Georganne Muse, Marilyn Sandau, Jackie VanNoy, and Patricia Webber.

The Port Ludlow Abstract Art Group meets monthly at the Bay Club. It was founded in 2015 by Patricia Webber, who serves as the facilitator to promote awareness and appreciation of abstract art and to provide a supportive peer group for constructive critique of each other's current work. Contact Patricia Webber at 206-451-4810 or email at patricia98110@gmail.com for additional information about the group.

January's art exhibit in the Gallery Hall at the Bay Club is a group show by members of the Port Ludlow Art League's Abstract Art Group. Eight artists, representing a wide range of styles and media make this exhibit an exciting and comprehensive survey of abstract art right here in Port Ludlow. The artists showcased are Pat Carneal, Viv

January 2018

A New Year for New Inspiration!

The Port Ludlow *Art* League has a new name ... can you tell the difference? It's been shortened from Port Ludlow *Artists'* League.

The goals are the same: inspire and support League artists, engage the community, and encourage the next generation of artists. *The pursuits are the same:* provide interesting and pertinent education by bringing guest speakers and knowledgeable artists to the League's monthly meetings, and to provide the occasional hands-on art exploration classes for those hoping to learn a new skill or enhance old ones. *The atmosphere is the same:* friendly, interesting and lively conversations with artists eager to share their passion for art at the monthly meetings and at the Second Wednesday Receptions. *The venues are the same:* The Gallery, The Inn, Sound Community Bank, the Beach and Bay Clubs, Active Life Physical Therapy, Coldwell Banker, and the Gateway Visitors Center. All provide wall space for League artists to share their artwork with their clients and the community.

The League invites one and all to their Second Wednesday Reception **January 10**, from 4:00 to 6:00 p.m. at the Gallery and the lobby of Sound Community Bank, 9500 Oak Bay Road, Port Ludlow. The "Winter Treasures" group show has been held over in the bank lobby while the Gallery has undergone its winter cleaning and is stocked with new artwork by the gifted League artists. Start off the New Year with inspiration, conversation, laughter, and some spiced apple cider, all guaranteed to warm away the winter chills.

Port Ludlow Art League's January Program

Sunshine and warmth in January? Yes, the Port Ludlow Art League continues its January tradition to share the warmth with a potluck soup luncheon and a sunshine card-making social. The program meeting is **Wednesday, January 17**, 1:00 p.m. at the Bay Club.

Hot soups will be served while the artists create original art greetings cards for the Sunshine Committee. Artists should bring their own favorite tools and media; the League provides the blank cardstock.

In addition, there will be a "white elephant" table where artists can bring art items (art supplies, tools, and books) they no longer want and can trade or donate to other members, while donating to the League's Chimacum Schools Scholarship Fund.

Guests are welcome to attend for only \$5. January is the perfect time to join the Port Ludlow Art League. For

only \$40 per year, members enjoy a year of engaging and inspiring programs for art lovers and artists of all levels.

For more information, contact Patricia Webber at 2pw@gmx.com.













February 2018

PLAL's Artist and Jeweler of the Month



Painting by James Ferrara.

Submitted photo

The Artist of the Month, James Ferrara, is a native of Washington State, educated in design and graphic arts, who began his career as the Art Director for CBS Television in Seattle. However, his education started much earlier when his father, a welder by trade, but an artist at heart, taught James how to use the welding tools and materials that were readily available in their barn.

In 1978, James freelanced designing sets in the commercial film and video production business. Often, when designing a set for a shoot, the perfect prop was not available. He would design and fabricate what was needed, which became the genesis for a line of home accessory and furniture pieces. These designs earned James two Emmys, an ADDY, and a Clio award.

James has exhibited his designs at the Western Design Conference in Wyoming and created custom furniture pieces that were commissioned by art lovers from coast to coast. He recently displayed his artwork and jewelry at the Port Ludlow Bay Club, using rusted steel, copper, leather, rattan, wire, resin, or wood to create unique pieces.

During the month of February, James' artwork will be on display at the Port Ludlow Sound Community Bank.

On a whim, the Jeweler of the Month, Judy Danberg, signed up for a jewelry-making class at the Port Ludlow Bay Club 25 years ago. With no experience in jewelry making, Judy didn't know what to expect, but she found jewelry making immensely satisfying.

Her collection of beads sparks her creativity. Many pieces feature beads from all over the world, such as Russian blue beads brought to the Pacific Northwest by Russian fur traders centuries ago. Several of Judy's pieces include antique French and die-cut gold beads, while other pieces incorporate Victorian glass lamp pulls from Venice and vintage Swarovski crystals.

Over the years, Judy's jewelry and quilts have been on display at many local venues, and her latest work will be on display at the Port Ludlow Art Gallery during the month of February.

You can meet these talented artists at the Port Ludlow Art League's Second Wednesday Reception on **February 14** in the lobby of Port Ludlow Sound Community Bank from 4:00 – 5:00 p.m. and next door at the Gallery from 4:00 – 6:00 p.m. The Bank and Gallery are located at the corner of Oak Bay Road and Osprey Ridge Drive. For more information, contact League President, Claudia Wicks at 206-351-2414 or email her at claudiawicks@msn.com.

Port Ludlow Art League Shows Ways to Inspiration

Professional artist and dynamic art instructor Meg Kaczyk shares her approach to finding creative inspiration on **Wednesday, February 21**, 1:00 p.m. at the Bay Club for the Port Ludlow Art League (PLAL) program meeting.

Working from source materials such as photos, life, and small sketches as a starting point, Ms. Kaczyk will suggest ways to open-up creative possibilities and ways for each person to express a unique visual voice. "Art should be free and fast and fun," says Ms. Kaczyk, "and this approach lets you relax the imperative of realism and making it perfect."

This approach is not about mediums or craft – it is about evolving visual literacy and bringing confidence and

Art League continued from previous page

joy into the art-making process. Artists of all levels and mediums will find this program relevant to their work.



Painting by Meg Kaczyk.

Submitted photo

Kaczyk will demonstrate (on-the-spot) her work process and show student examples of each type of source inspiration.

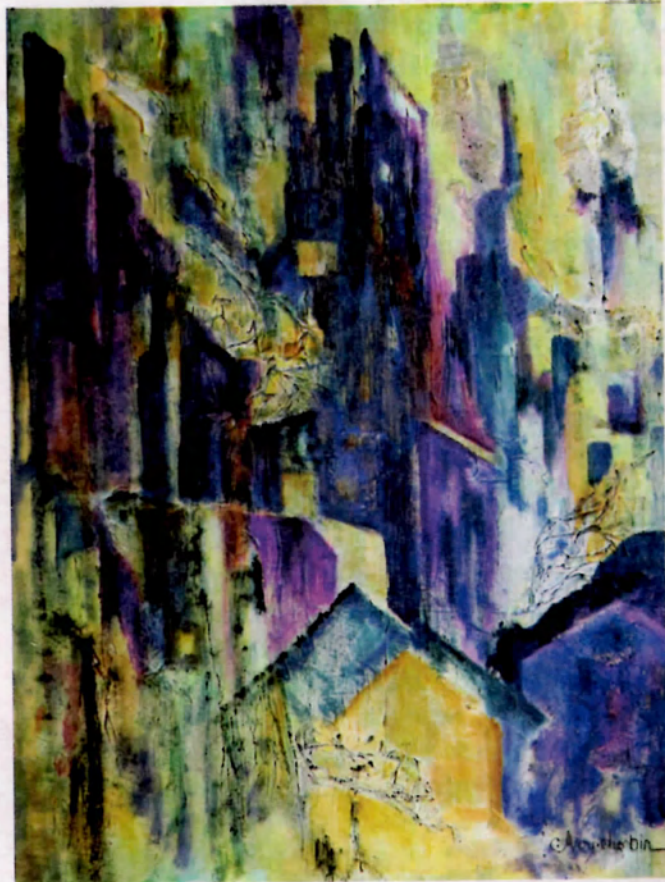
The Port Ludlow Art League has more exciting and inspiring programs in store for 2018 for both art lovers and artists of all levels, so now is a perfect time to join. Dues are only \$40. Guests are welcome to attend for a \$5 fee which goes to a scholarship fund for student artists. For more information, contact Patricia Webber, PLAL program chair, at patricia98110@gmail.com.

Bay Club Art Exhibition

Carol Durbin has always dabbled in one art form or another, appreciating the colors, textures, and sensations of the world around her.

When she and her husband were living in Okinawa, Japan, she was introduced to Suiboku, a general classification of Sumi-e, which literally means ink-picture, while Suiboku means ink and water – the shading of black ink into gray using a single brush stroke. Emphasis is placed on the beauty of each individual brush stroke, capturing the spirit and vitality of the subject matter. Carol took lessons from a Sumi-e master who spoke almost no English. As a result, they would sit for hours in silence on Tatami mats while Carol watched and replicated the instructor's technique. Carol says, "Living in Japan ingrained in me the value of less is more in Japanese art forms."

After moving to Port Ludlow 11 years ago, Carol focused on painting with acrylics. Unlike oils, acrylics are water-based and depending on how much paint is diluted with




Painting by Carol Durbin.

Submitted photo

water or modified with acrylic gels or pastes, the finished painting can resemble a watercolor or a heavily textured oil painting.

Carol's paintings, ranging from her Sumi-e training to abstracts in the vibrant colors of California and Mexico, will be on display at the Port Ludlow Bay Club during the month of February. Come meet her at Port Ludlow Art League's Second Wednesday Reception on **February 14** in the lobby of Port Ludlow Sound Community Bank from 4:00 - 5:00 p.m. and next door at the Gallery from 4:00 - 6:00 p.m. The Bank and Gallery are located at the corner of Oak Bay Road and Osprey Ridge Drive.



Port Ludlow Art League
GALLERY

Next to Sound Community Bank
Open: Tues Through Sat - Noon to 4 pm
www.portludlowart.com

Port Ludlow Art League hosts featured artists Wednesday

PENINSULA DAILY NEWS

PORT LUDLOW — The Port Ludlow Art League will host a reception for its featured artists from 4 p.m. to 6 p.m. Wednesday.

The February artist of the month is James Ferrara, the jeweler of the month is Judy Danberg, and the featured artist at the Port Ludlow Bay Club is Carol Avoy Durbin.

The artists will be available during the reception in the lobby of Port Ludlow Sound Community Bank from 4 p.m. to 5 p.m. and next door at the league's gallery from 4 p.m. to 6 p.m. Both are on the corner of Oak Bay Road and Osprey Ridge Drive.

Ferrara is a native of Washington state who has exhibited his designs at the Western Design

Conference in Wyoming and created a variety of custom furniture pieces. He recently displayed his artwork and jewelry at the Port Ludlow Bay Club, using rusted steel, copper, leather, rattan, wire, resin or wood.

During the month of February, his artwork will be on display in the lobby of Port Ludlow Sound Community Bank.

Danberg signed up for her first jewelry-making class 25 years ago and found the craft immensely satisfying.

Many pieces feature beads from all over the world, such as Russian blue beads brought to the Pacific Northwest by Russian fur traders centuries ago. Several of her pieces include antique French and die-cut gold beads, while other pieces incorporate Victorian glass lamp

pulls from Venice and vintage Swarovski crystals.

Her latest work will be on display at the Port Ludlow Art Gallery during the month of February.

When Durbin looks back at paintings she created over the last decade, since moving to Port Ludlow, she recognizes places she visited many years ago.

Many of her works have an Asian influence which she acquired studying Sumi-e painting in Japan. Her water-themed works are from the years sailing on the water and SCUBA diving beneath it. She has painted her experiences of living near quiet mountains and forests and of living in large cities.

The works shown in the gallery are a retrospective of art created during her days in Port Ludlow, all based on her experiences in life.











Three-Dimensional Plaster Painting Port Ludlow's Artists of the Month



Untitled paint and plaster, by Kristina Stimson.

Submitted photo

The Port Ludlow Art League is excited to welcome Kristina Stimson on "3-D Plaster Painting" to its **Wednesday, March 21**, 1:00 p.m. program meeting.

Kristina is a versatile and talented artist whose artwork is rich with color and energetic textures. She works with paints, found objects, and plaster of Paris, and combines sculpting and painting to create her beautiful abstract works. She will show examples of her work and talk about her process.

Creativity is integral in her work as a professional architect. Kristina has a strong commitment to protecting the environment and finding innovative solutions in her designs and large-scale renovations. She holds a Bachelor of Architecture degree from Arizona State University, is accredited as a LEED architect (Leadership in Energy and Environmental Design) and has a certificate in fine art from L'Ecole des Beaux-Arts in France.

The league's program meeting is at the Bay Club. Guests are welcome to attend for a small fee of \$5. For information, contact Patricia Webber at patricia98110@gmail.com.

March 2018

Artist of the Month – Rick McKenzie



A photograph by Rick McKenzie.

Provided photo

Rick McKenzie grew up in New England. After serving in the US Marine Corps during the Vietnam era, he studied photography while earning a degree in Forestry. For twenty years, Rick managed a commercial landscaping business. During that time, his keen observation of natural surroundings became the foundation of his photographs.

In 1988, Rick moved to Washington State, and later in 2000 established the Pixture You Photography business, where he strives to capture the world's natural grace and beauty in his camerawork. Rick thankfully acknowledges that, "I've had one adventure after the next. The love of the outdoors and photography in landscape, nature, and wildlife has evolved into more of a passion to share my experiences with others."

Rick's work has been displayed at the Northwind Arts Center in Port Townsend, the Port Ludlow Inn, the Port Ludlow Bay Club, and the Port Ludlow Art League Gallery. A collection of his photographs will be on display at the Port Ludlow Sound Community Bank in **March**.

Jeweler of the Month – Sharon Zabloney

Sharon Zabloney spent many years teaching microbiology, the branch of biology that focuses on the structure, function, and modes of microscopic organisms to wide-eyed college students. When Sharon retired, she shifted her attention to learning about different aspects of art, including drawing, watercolor, acrylic, and silver art.

While attending an art show some years ago, Sharon was drawn to sculpture that used beautiful glass beads, known as Baci artwork, which features silver and enamel beads, zirconia, and Swarovski crystals.

Sharon uses the lampwork process that entails using a torch to heat glass on the end of a steel rod, while adding

Artists continued from previous page

bits of colored beads and glass. Sharon reflects that her inspiration comes from beautiful colors, clean lines, and patterns. For Sharon, the freedom to take molten glass and transform it into intricate, beautiful designs is the height of the creative process.



Jewelry by Sharon Zablotney.

Submitted photo

Sharon's latest creations will be on display at the Port Ludlow Art Gallery in March.

You can meet these talented artists at the Port Ludlow Art League's Second Wednesday Reception on **March 14** in the lobby of the Port Ludlow Sound Community Bank from 4:00 – 5:00 p.m. and next door at the Gallery from 4:00 – 6:00 p.m. The Bank and Gallery are located at the corner of Oak Bay Road and Osprey Ridge Drive. For more information, contact League President Claudia Wicks at 206-351-2414 or email her at claudiawicks@msn.com.

Port Ludlow Bay Club Art Exhibit - Marilyn Sandau, Collage Artist



Collage by Marilyn Sandau.

Submitted photo

Marilyn Sandau's love of collage was inspired by the work of Joseph Cornell, one of the pioneers and most celebrated promoters of collage. Derived from the French verb *coller*, meaning "to glue," collage is a work of art that involves gluing things like paper, cloth, or found objects onto a canvas or board and incorporating them into a painting or composition.

Marilyn enjoys working with contrasting elements, such as old, brittle paper, soft tissue paper, and ancient text, both in English and foreign languages. For texture, Marilyn incorporates such items as Braille pages, screening, wire, buttons, lace, and cheesecloth into her art. Some of Marilyn's pieces tell a story, while others are a blend of color, composition, and movement. "Making a collage is like working a puzzle, moving the pieces around until they fit, paying attention to color, movement, and shape."

Being a mixed-media artist, Marilyn is always looking for ways to add abstract designs and new textures, such as beeswax, gelatin, and one of a kind, hand-pulled prints to her art pieces.

Marilyn's art will be on display at the Port Ludlow Bay Club in March. The Port Ludlow Bay Club is located at 10 Spinnaker Lane, Port Ludlow, WA. For more information, contact League President Claudia Wicks at 206-351-2414 or email her at claudiawicks@msn.com.

Port Ludlow Artists Exhibit at Local Merchants

During March and April, Port Ludlow Art League members will be exhibiting their art at the following locations:

Janice Gruber's oil and acrylic art will be at Active Life Physical Therapy; Mara Mauch will have her photographs at Coldwell Banker Real Estate; Jim Watson-Grove will be exhibiting his acrylic work at Olympic Peninsula Gateway Center; and Li Salopek's oils will be at the Beach Club Gallery.

Art Fest Returns to Port Ludlow

Save the date: **Saturday, May 5**, for a full day of art, learning, and fun at the Bay Club. Art Fest is presented by the Port Ludlow Art League. Proceeds benefit the scholarship fund for Chimacum High School graduates.

Pick up an Art Fest brochure at the Bay Club, Beach Club, or the League's Gallery next to Sound Community Bank. For information, contact Patricia at patricia98110@gmail.com or stop by The Gallery, open Tuesday through Saturday, noon to 4:00 p.m..



"Best In Race"
Audy







Jeanette Best



Quimper Unitarian Universalist Fellowship

Port Townsend, WA



Jeanette Best was born to Swedish immigrant parents in 1938, obtained a BA from the U. of Wisconsin and an MA in Creative Arts from San Francisco State University. She studied art at the Art Institute of Chicago, UCLA, College of the Americas in Mexico City, and Timo Pajunen College of Marin, as well as with Janet Brown on Whidbey Island, and Melissa Newell at Edmonds Community College. She taught Water Media and Studio Arts at Peninsula College, Sculpture with Quimper Arts in PT, and Ceramics at the Port Ludlow Bay Club. Her work has been exhibited in Washington and Oregon.

Jeanette was a mentor of artists and participated in the founding of organizations that support local artists, such as Port Townsend (renamed Jefferson) Arts Alliance, which eventually became Northwind Arts Center, Art Port Townsend, and the Port Ludlow Art League. The Port Townsend Arts Commission named her Angel of the Arts in 2004 and Patron of the Arts posthumously in 2017.

Jeanette devoted countless hours to our community, saying, "I think I'm doing my own work less because of my community involvement. But there's a definite reward in being part of making things happen in an area that you feel is important." Jeanette served on the boards of many of the organizations she help found, as well as other charitable organizations throughout the West Coast. She was Northwind's board president for twelve years, before stepping down from that position in 2016. Jeanette bequeathed her art to Northwind. Some of the pieces will be offered to the Jefferson County Historical Society, and others will be sold to continue Jeanette's work at the Arts Center.

Suzanne Wilbur-Cunliffe, chair of the Quimper Unitarian Universalist Fellowship Aesthetics Committee, said of Jeanette:

"She was a powerhouse in the local art world and a catalyst for much of the art colony that exists today. Her contacts and influence were demonstrated through most of the art exhibited in QUUF. One of her last efforts was to review the primary selection of our current display [December, 2017] in the Fellowship Hall and the foyer called 'Spiritual Inspiration.' An artist in her own right, she selected four of her own paintings to express her personal reflections, and gave them to us early yesterday morning on the day she died. Jeanette's mission in life was to connect the arts and the community, which she did very well. We will miss her!"

JEANETTE BEST

Celebration of Life Service

Saturday March 17, 2018 3pm

Gathering Music

Opening Words & Welcome

Lighting of Chalice (spoken in unison)

With deep gratitude for all who have kept burning the flame
that lights our path, we kindle our chalice.

We remember thus in love, the long pilgrimage of those living
and dead, who have in faith and hope guided our way.

Readings & Reflections

Music

Reminiscences & Recollections

Åsa Mauritzen, cousin

Rae Belkin, friend

Rev. Pam Douglas-Smith, minister

An Artist's Legacy

Sylvia White

Michael D' Alessandro, Executive Director, Northwind Arts

Prayer of Gratitude & Spoken Benediction

Postlude

Officiants: Rev. Bruce Bode & Rev. Pam Douglas-Smith

Music: Simon deVoil

Sound: Sarah Hull

Reception Coordination: Cathe Bell





April 2018

Port Ludlow's Artists of the Month

Leilani Child Wilds, Artist of the Month



Fruiting Bodies, by artist Leilani Child Wilds

Submitted photo

Leilani Child Wilds is an accomplished multimedia artist. Her work spans multiple creative forms, from printmaking and painting, to ceramics, sea glass jewelry, and photography.

While living in Southern California, Leilani earned a Liberal Arts degree at California State University and then attended Claremont Graduate University, where she received a Master of Fine Arts degree.

Leilani is always on the hunt for new techniques and enjoys the process of making a technique her own through lots of trial and error. Leilani often incorporates flora and fauna into her art, especially in printmaking. Leilani said, "Peace, complexities, color, and the beauty of nature inspire most of my art."

As a true patron of the arts, Leilani has hosted fundraisers for charitable organizations and colleges at her art studio and believes the process of creating art is satisfaction enough to justify the effort.

Leilani's artwork will be on display at the Port Ludlow Sound Community Bank in April.

Maggie Smith, Jeweler of the Month

Maggie Smith has been making beads and designing jewelry for over 25 years. She got her inspiration for lampworking after visiting Andrea Gurino, an award-winning artist, at her Port Townsend art studio. After taking one of Andrea's classes, Maggie was hooked, and then went on to hone her talent by attending art classes at the Pratt Fine Art Center in Seattle. Maggie is currently a member of the International Glass Bead Society.

Many of Maggie's art pieces are a collaborative effort with her daughter Shelby. In addition, Maggie works with other artists to design original beads and glass art. "When I work with glass, unexpected things just happen," Maggie said. When traveling, Maggie often leaves some of her glass beads in rivers and lakes or tucked into unobtrusive places for others to find.



Maggie Smith's jewelry.

Submitted photo

Maggie's latest jewelry collection will be on display at the Port Ludlow Art Gallery in April.

You can meet these talented artists at the Port Ludlow Art League's Second Wednesday Reception on **April 11** in the lobby of the Port Ludlow Sound Community Bank from 4:00 – 5:00 p.m. and next door at the Port Ludlow Gallery from 4:00 – 6:00 p.m. The Bank and Gallery are located at the corner of Oak Bay Road and Osprey Ridge Drive. For more information, contact League President, Claudia Wick at 206-351-2414 or email her at claudiawicks@msn.com.

Heidi Lee, Port Ludlow Bay Club Exhibitor



Syrian Refugee, by artist Heidi Lee.

Submitted photo

Heidi Lee is a Pacific Northwest artist who holds Bachelors of Arts degrees in Fine Arts, Psychology, and Religion. Over the past 35 years, Heidi has worked and exhibited out of the Directors Gallery, Art Concepts on Broadway, and multiple community venues. Heidi also participates in artists' cooperatives, juried shows, and philanthropic endeavors.

Her work reflects her passion for diversity and portraying the human condition. Through her work, Heidi hopes to start a conversation about some of the current issues that are facing our society.

Heidi has held multiple solo exhibits; including her sensitive graphite life studies of children, the Colors of a Woman show, her celebrated Madonna Series, and her much publicized Touching the Troubled Mind exhibit. Heidi's graphite work was on display at the Bainbridge Museum as part of their grand opening and remains a part of their permanent collection.

Her pastel portraits will be on display at the Port Ludlow Bay Club in April. The Bay Club is located at 120 Spinnaker Place in Port Ludlow. For more information, contact League President, Claudia Wicks at 206-351-2414 or email her at claudiawicks@msn.com.

Art Fest 2018 Combines Art, Fun, and Philanthropy

If you've ever wanted to create your own art in a fun, supportive environment while helping local students, Art Fest is for you.

On **Saturday, May 5**, the Port Ludlow Art League is again presenting Art Fest at the Bay Club. This all-day event features two classes of your choice taught by talented, professional Art League members. All materials are provided and at the end of each class you'll have two finished pieces of art. Rounding out the day is a catered lunch and a wine and cheese reception, all for only \$100.

Last year, Art Fest received rave reviews! Back by popular demand is Watercolor Painting with Gary Griswold, Encaustic Printmaking with Victoria Foster Harrison, Visual Art Journaling with Annie Danberg, and Creative Collage with Jackie VanNoy and Gail Larson. New this year is Silk Scarf Dyeing with Mary Lynn Laker, Jewelry Making with Judy Danberg and Sharon Zabloutney, Abstract Felting with Pamela Raine, Mask Making with Carol Durbin, and Acrylic Painting with Marti Mathis.

Registrations are due by **Monday, April 16** and are processed on a first come/first served basis. Register early for your first choice classes. Art Fest will be a sell out!

Pick up registration forms at The Bay Club or the Port Ludlow Art League Gallery. Online registration is available at BrownPaperTickets.com (search Port Ludlow Art Fest).

Art Fest is a fundraiser for the Art League's scholarship fund for Chimacum High School graduates who are continuing their art studies in higher education. Over the past 13 years, the Art League has awarded over \$30,000 to deserving students.

The Art League thanks our Gold level sponsors that have generously contributed to Art Fest 2018: Active Life Physical Therapy, Coldwell Banker Best Homes, and Windermere Real Estate in Port Ludlow and Artist & Craftsman Supply in Seattle.

For more information, visit the League's website, portludlowart.org or contact the Art Fest chairperson, Patricia Webber, at 206-451-4810 or 2pw@gmx.com.

Mike Biskup—His Art and His Journey



Mike Biskup

Submitted photo

The Port Ludlow Art League (PLAL) is pleased to present Mike Biskup at its program meeting at the Bay Club on **Wednesday, April 18**, at 1:00 p.m.



Biskup will showcase examples of his work, demonstrate his process on paintings at different stages of completion, and discuss the blending of his life and art journey. Throughout his program, he will share insights about discovering your inner voice and your inner art critic – the

imperative of finishing pieces, how to relax while making art, and why rules are made to be broken.

His work is exhibited locally in galleries in Port Townsend and Bainbridge Island as well as in private collections throughout the West Coast. He teaches and serves on the Board of Directors of Port Townsend School of Art.

The public is welcome to attend the program and social time for \$5 which goes to a scholarship fund for Chimacum art students. For more information, contact Patricia Webber PLAL program chair, at 2pw@gmx.com.





Collage art by Marilyn Sandau is on display at Port Ludlow's Bay Club this month. The Port Ludlow Artists' League also presents photographs by Rick McKenzie and glass beads by Sharon Zablutney at its gallery. An artists' reception is planned for March 14. *Courtesy art*

Ludlow presents 3 artists

LEADER STAFF
ARTS@PTLEADER.COM

The Port Ludlow Artists' League presents its artist and jeweler of the month, photographer Rick McKenzie and glass artist Sharon Zablutney, at its Second Wednesday reception. The event is set for 4-6 p.m., March 14 at the Port Ludlow branch of Sound Community Bank and the gallery next door, located at the corner of Oak Bay Road and Osprey Ridge Drive.

Another artist, Marilyn Sandau, presents her work at Port Ludlow's Bay Club, 10 Spinnaker Lane, through the end of the month.

McKenzie began to study photography while earning a degree in forestry, following his service in the U.S. Marine Corps during the Vietnam War era. He managed a commercial landscaping business for 20 years and during that time, his observation of natural surroundings became the foundation of his photographs.

In 1988, McKenzie moved to Washington state and in 2000 established the Picture You Photography business.

"I've had one adventure after the next," said McKenzie. "The love of the outdoors and photography in landscape, nature and wildlife has evolved into more of a passion to share my experiences with others."

His work has been displayed at the Northwind Arts Center in Port Townsend, the Port Ludlow Inn, The Bay Club and the Port Ludlow Artists' League Gallery.

Zablutney began to learn about different aspects of art, including drawing, watercolor, acrylic and silver art, following a career teaching microbiology to college students.

While attending an art show some years ago, she was drawn to sculpture that used glass beads known as baci. Inspired by this art, she began making her own glass beads, which are influenced by color, clean lines and patterns. Her jewelry has been on display at many of Port Ludlow's local venues.

Sandau, a collage artist whose work is on display at The Bay Club, enjoys working with contrasting elements, such as old, brittle paper, soft tissue paper and ancient text, both in English and foreign languages. For texture, she incorporates items such as Braille pages, screening, wire, buttons, lace and cheesecloth.

"Making a collage is like working a puzzle, moving the pieces around until they fit, paying attention to color, movement and shape," said Sandau.

For more information about the league, contact its president, Claudia Wicks at 206-351-2414 or claudiawicks@msn.com.

NORTHWIND ARTS CENTER

CONNECTING ARTS AND COMMUNITY

January 29, 2018

Port Ludlow Art League
120 Spinnaker Place
Port Ludlow, WA 98365

Dear Port Ludlow Art League,

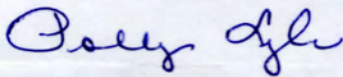
Thank you for your generous gift of \$100 made to Northwind Arts Center on January 15, 2018, in memory of Jeanette Best. Your donation will be used to upgrade the waterside gallery at Northwind, which has been dedicated to Jeanette as the Jeanette Best Gallery.

Your financial support of Northwind demonstrates the value you place on the arts in your community in these times. Donors like you are the bedrock of support that enables Northwind to provide important programs, and maintain partnerships, that make it possible to serve both our immediate community and our region – continuing in the legacy of Jeanette's important advocacy for the arts.

Please take a moment to visit our website northwindarts.org to learn more about our exciting and informative exhibits, readings, and other events planned for 2018. We hope you'll participate in many of the programs Northwind will be offering in 2018.

We are grateful for your gift, which will be used to honor Jeanette's extraordinary leadership at Northwind Arts Center and Art Port Townsend.

See you soon at the Arts Center,



Polly Lyle
Development and Fundraising Committee
donate@northwindarts.org

Northwind Arts Center is a nonprofit 501(c)(3) organization. Donations are tax deductible to the extent allowable by law, EIN 02-0584427. No goods or services were provided in exchange for this donation. This letter serves as your gift receipt.

701 Water Street
Port Townsend
Washington 98368
360-379-1086

northwindarts.org





Port Ludlow Art League May Program



Oil and cold wax by artist Wanda Mawhinney.

Submitted photo

Talented local artist Wanda Mawhinney will demonstrate her unique oil and cold wax process at the Port Ludlow Art League (PLAL) program meeting on **Wednesday, May 16**, at the Bay Club at 1:00 p.m. She achieves interesting textures by removing surface paint with scraping tools to reveal hidden dimensions.

Wanda's paintings are full of color and texture which give her captivating artwork energy, depth, and beauty. She serves as chairperson of the Exhibitions Committee at Northwind Arts Center and is a long-time active member of the Port Ludlow Art League., where she exhibits her work in the Gallery.

The program meeting is open to PLAL members and the public. Non-members are asked to make a \$5 donation to the League's scholarship fund for Chimacum High School graduates. For more information, contact Patricia Webber, PLAL program chair, at 2pw@gmx.com.

Port Ludlow Art League's Art Fest

Port Ludlow Art League's (PLAL) Art Fest is scheduled for **Saturday, May 5**, from 9:00 a.m. to 4:00 p.m. at the Port Ludlow Bay Club. There will be a wide slate of art classes to choose from with both morning and afternoon sessions. Many Port Ludlow artists have generously donated their time and talents to teach the various art classes. The Art Fest instructors' work will be on display at the Bay Club in May.

Participating artists include (in alphabetical order):

Annie Danberg

Annie is a lifelong artist, in addition to being a marriage and family healing therapist. Visual journaling has been her passion and primary art form since 2004. Annie resides in the San Francisco Bay area, where she leads classes that use creative expression as a vehicle for achieving psychological insight, personal growth, and creative freedom.

Judy Danberg

Judy is drawn to beads that have a history. Some of her jewelry features trade beads from the 1800s, French gold beads from the 1750s, Victorian glass lamp pulls from Venice, and vintage Swarovski crystals, all incorporated into modern settings.

Carol Durbin

Carol Durbin has always dabbled in one art form or another, appreciating the colors, textures, and sensations of the world around her. Carol recently displayed a retrospective of her artwork, reflecting the time she spent in Japan, California, and Mexico.

Gary Griswold

Some of watercolorist Gary's favorite subjects are classic boats and marine and nature scenes in the Northwest. He is inspired by wind, temperature, and the smells of nature, and he travels to coastal areas to get inspiration for his paintings.

Victoria Foster Harrison

Victoria creates original, one-of-a-kind prints on a warmed palette with chunky pigmented beeswax. Then, she embeds the prints onto a panel and embellishes the prints with hand-dyed silk, rusty objects, paper ephemera, and mark-making techniques while focusing on subtle yet rich color.

Mary Lynn Laker

Over the years, Mary Lynn has worked with fabric, mixed-media, photography, paint, metal, glass, and wax. She loves to experiment, and as a result her artwork is often eclectic, just the way she thinks about life.

Gail Larson

Inspired by visual and performing arts, Gail is an accomplished painter and collage artist. She generally works with a limited palette, selecting subtle colors for the theme and giving design, value, and movement to the piece.

Marti Mathis

Marti strives to capture the splendor of a mountain, personality of a blossom, and subtle expression of a person or animal.

continued on next page

Art Fest continued from previous page

Pamela Raine

As an accomplished watercolorist, mixed media artist, and jeweler, Pamela blends these diverse mediums into wearable abstract art. She believes in the “no fear” approach to art and teaches monthly art technique classes.

Jackie VanNoy

Jackie began formal art studies at the State University College in Buffalo, New York. She continues to expand her visual vocabulary using collage, painting, calligraphy, and drawing. Her work has received awards, both nationally and regionally, in several media including acrylics, watercolor, and collage.

Sharon Zablottney

When Sharon retired, she started to explore the many forms of art media, including drawing, watercolor, acrylic, and silver art. Sharon uses the lampwork process to transform glass into intricate, beautiful jewelry.

Art Fest brochures are available at the Bay Club and the PLAL Gallery. For more information, contact League President, Claudia Wicks at 206-351-2414 or email her at claudiawicks@msn.com.

May 2018



Port Ludlow Art League

GALLERY

Next to Sound Community Bank
Open: Tues Through Sat - Noon to 4 pm
www.portludlowart.com

Port Ludlow Art League's Jeweler Dream Team



Judy Danberg.

The Port Ludlow Art League's jeweler consortium will exhibit their work at Port Ludlow Sound Community Bank on **Wednesday, May 9**. Jewelers working with distinctive gemstones, beads, and metals will present a wide range of beautiful pieces.

Participating artists:

Judy Danberg has been crafting jewelry for over 20 years and is drawn to beads that have a

history. Some of her jewelry features trade beads from the 1800s, French gold beads from the 1750s, Victorian glass lamp pulls from Venice, and vintage Swarovski crystals.

Ginny Ford enjoys experimenting with new mediums and techniques. She became interested in jewelry while traveling in Asia, particularly Bali. She designs jewelry using classic silversmithing, enameling on copper, and precious metal clay.

Linda Henderson has always had a keen eye for color and style. During her travels, Linda uncovered unusual beads, gemstones, and precious metals and combines them into her bold jewelry designs.

Katie Jablonski found creating jewelry to be both enjoyable and therapeutic. She uses a variety of precious stones, bone, and handmade metal forms.



Katie Jablonski.

Mary Lynn Laker has worked with fabric, mixed media, photography, paint, metal, glass, and wax. She loves to experiment with these diverse mediums. As a result, her jewelry is often eclectic, reflecting the world around us.

Mara Mauch works with fused glass to create unique cabochons that result in stunning necklaces, bracelets, and earrings. Mara believes that fused glass is the intersection of science and art,

and she creates one-of-a-kind jewelry.



Georganne Muse.

Georganne Muse collected semi-precious stones for many years. As a result, she learned how to create artisan wire jewelry. Aside from creating beautiful artwork, Georganne found that the repetitive movements of wire-wrapping put her in a pleasing Zen-like state, which is reflected in her jewelry.

Nancy Palsulich is an eighth-generation florist and master designer. She's collected

gemstones in pastel shades and rich jewel tones from around the world. Nancy draws on her extensive background to design jewelry, combining her collection of gemstones with sterling silver and gold.

Maggie Smith has been making beads and designing jewelry for over 25 years. She developed her inspiration for lampworking after visiting Andrea Guarino, an award-winning artist, at her Port Townsend art studio. Many of Maggie's pieces are a collaborative effort with her daughter Shelby.

When Sharon Zablony retired, she started to explore the many forms of art media, including drawing, watercolor, acrylic, and silver art. Sharon uses the lampwork process to transform glass into intricate, beautiful jewelry.

Pamela Raine is Jeweler of the Month. Her jewelry is spotlighted at the Port Ludlow Art Gallery, in addition to the Port Ludlow Art League's Jeweler Dream Team. Pamela recently traveled to Southeast Asia and brought back a collection of abalone from Vietnam and antiques from the night market at Luang Prabang, Laos. Pamela is inspired by her travels and weaves those experiences into her jewelry.



Pamela Raine.

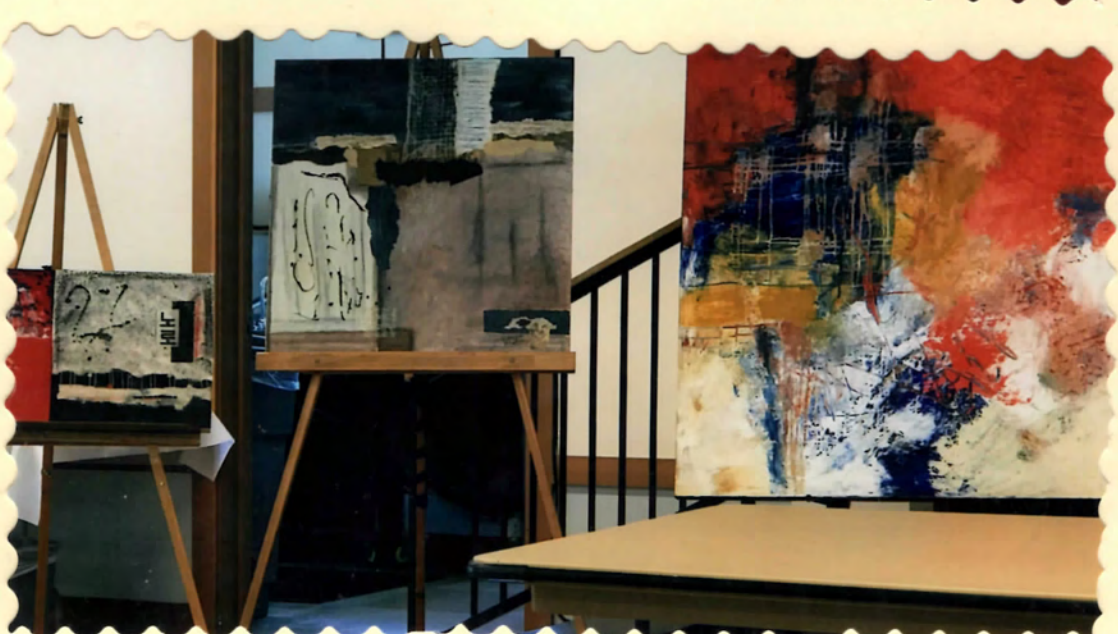
Submitted photos

You can meet these talented artists at the Port Ludlow Art League's second Wednesday reception on **May 9** in the lobby of Port Ludlow Sound Community Bank and next door at the Port Ludlow Art Gallery from 4:00 – 6:00 p.m. The bank and gallery are located at the corner of Oak Bay Road and Osprey Ridge Drive. For more information, contact League President, Claudia Wicks at 206-351-2414 or email her at claudia-wicks@msn.com.













Artist's legacy



JEANNIE McMACKEN/PENINSULA DAILY NEWS

Northwind Arts Center Board President Thya Merz and a team of volunteers have been working to gather the art, furnishings and personal items of the center's co-founder, the late Jeanette Best, for an estate sale to be held Friday and Saturday from 9:30 a.m. to 5 p.m. at Best's waterfront home on Mats Mats Bay.

Sale of Jeanette Best estate to aid Northwind

Event set for home on Mats Mats Bay this Friday, Saturday

By JEANNIE McMACKEN
PENINSULA DAILY NEWS

PORT LUDLOW — The colorful, waterside Mats Mats Bay home and studio of the late Northwind Arts Center co-founder and artist Jeanette Best is still filled with light, even though her brushes have been stilled.

What remains is Best's legacy of love for the organization she nurtured for

the past 19 years.

When Best died in December at the age of 79, she left the bulk of her estate to Northwind: the contents of her home and some property.

Northwind volunteers have organized an Estate and Art Sale from 9:30 a.m. to 5 p.m. Friday and Saturday at her home at 60 Carey Court, off Oak Bay Road, with 100 percent of the proceeds going to the Jeanette Best Memorial Fund at Northwind Arts Center.

The art center board plans to use the funds to update the gallery which bears her name in the Waterman-Katz building on Water Street in Port Townsend.

The entire contents of her home

will be offered for sale including furniture, furnishings, kitchenware, clothing, linens, decorations and her vast collection of indoor and outdoor potted plants.

Also included in the sale will be her personal art pieces, art books and her supplies.

"Her art, her supplies, her color, her personality is all throughout this house," remarked Thya Merz, president of the Northwind board of directors.

"She made her life on the bay for 27 years and her paintings drew inspiration from the views from her waterfront studio.

A quiet strength: PT's

Northwind to rename showcase gallery Jeanette Best Gallery

KATIE KOWALSKI
ARTS@PTLEADER.COM

When Michael D'Alessandro was interviewed for his current position as executive director of Northwind Arts Center more than three years ago, he knew – without knowing exactly who she was – that one quiet woman present was someone to watch.

She didn't ask many questions during the interview, D'Alessandro recalled, but of the four people in the room, he could tell he needed to listen to her the most.

That woman was Jeanette Best, cofounder of Northwind Arts Center and an avid arts supporter.

Best died of cancer Nov. 30. She was 79. Northwind is renaming its artists showcase as the Jeanette Best Gallery, with a ceremony scheduled for sometime in February.

"Her contribution to the arts in this area and this region is immense," D'Alessandro said.

ANGEL

Best cofounded Northwind Arts Center in 2001, and acted as its only board president until last year, when that position was assumed by Thya Merz.

D'Alessandro said Best's way of leading – a quiet way, in which she always chose her words carefully – was effective.

"She was practical, but she never said absolutely not," he said. "Even though there were times when she would stand up and say, 'That's not going to work,' she didn't just stop there – she tried to find a way to



Surrounded by art, a photo of Jeannette Best taken by Deja Webster, a board member of Northwind Arts Center. The cofounder of Northwind died Nov. 30. Photo by Katie Kowalski

Leader reported.

Under Best's leadership, Northwind hired its first executive director in 2014 – D'Alessandro – and moved from the building now occupied by the Jefferson County Chamber of Commerce, off Sims Way, to its prominent place downtown on Water Street.

LOYALTY

Best established and maintained relationships with the many volunteers she gathered, D'Alessandro said.

"Even though there were times when she would stand up and say, 'That's not going to work,' she didn't just stop there – she tried to

had a hand in making," D'Alessandro said. "I think that has been her legacy."

In the years that Best and D'Alessandro worked together as a team, Northwind expanded.

"We've been able to double the amount of gallery space we're using," D'Alessandro said.

In addition to the two galleries within Northwind, there's the "Art in the Library" show at Port Townsend Public Library, and "Art in the Hospital" at Jefferson Healthcare.

Enlivening the hospital with art was something Best had devoted herself to since she moved to the area.

In a 2004 interview with The Leader, Best stated, "My feeling was always that Port Townsend needed more galleries, not fewer."

She also helped build programs such as the Community Art Film Series with The Rose Theatre, which she supported personally.



Port Ludlow Art Fest

A full day of fun, creativity and learning
Saturday, May 5, 9:30-4:00
The Bay Club

Register in advance at The Bay Club,
The Gallery or BrownPaperTickets.com
Proceeds benefit the Port Ludlow Art League scholarship fund.

Art in Ludlow: Festival, jewelry show set

LEADER STAFF
ARTS@PTLEADER.COM

The Port Ludlow Art League hosts its Art Fest on May 5 at The Bay Club, 120 Spinnaker Place, Port Ludlow.

The event will offer a full slate of art classes and afternoon sessions. The Art Fest instructors' work will be on display at The Bay Club in May.

Artists include Annie Danberg, Gary Griswold, Carol Durbin, Harrison, Mark Lynn Laker, Victoria Raine, Marti Mathis, Jackie VanNoy and Sharon Zablottney.

The Port Ludlow Art League's exhibitors will be Judy Danberg, Ginny Ford, Linda Henderson, Katie Jablonski, Mary Lynn Laker, Mara Mauch, Georganne Muse, Nancy Palsulich, Maggie Smith, Sharon Zablottney and Pamela Raine.

Raine is the league's Jeweler of the Month. She recently traveled to Southeast Asia and brought back a collection of abalone from Vietnam and antiques from the night market at Luang Prabang, Laos.

Raine is inspired by her travels and weaves those experiences into her jewelry.

Art Fest is...
Morning and Afternoon Workshops including expert instruction, art supplies, and your two finished pieces of art to take home.
Luncheon. Wine & cheese reception. And more!
All for only \$100.

- Silk Scarf Dyeing
- Collage
- Acrylic Painting
- Mask Making
- Watercolor Painting
- Encaustic Printmaking
- Abstract Felting
- Art Journaling
- Jewelry

Meet the artists at the league's Second Wednesday Reception, set for 4-6 p.m. at the gallery, adjacent to the league's Community Bank at the corner of Oak Bay Road and Osprey Sound Drive in Port Ludlow.

For more information, contact Claudia Wicks, league president, at 206-351-2414 or email her at claudiawicks@msn.com.

Artists to teach classes at Art Fest slated for Saturday in Port Ludlow

PENINSULA DAILY NEWS

PORT LUDLOW — Port Ludlow Art League's Art Fest is scheduled for 9:30 a.m. to 4 p.m. Saturday.

The festival will be at the Port Ludlow Bay Club, 120 Spinnaker Place.

A wide slate of art classes will be available, with both morning and afternoon sessions. Information is available at <http://www.portludlowart.org/events>.

Port Ludlow artists will teach the classes. The art will be on display at the Port Ludlow Bay Club in May.

Participating artists include:

• **Annie Danberg**

Danberg is a lifelong artist, in addition to being a marriage and family healing therapist. Visual journaling has been her passion and primary art form since 2004.

• **Judy Danberg**

Danberg has been crafting jewelry for more than 20 years and is drawn to beads that have a history.

Some of her jewelry features trade beads from the 1800s, French gold beads from the 1750s, Victorian glass lamp pulls from Venice, and vintage Swarovski crystals, all incorporated into modern settings.

• **Carol Durbin**

Durbin has always dabbled in one art form or another, appreciating the colors, textures and sensations of the world around her, she said.

She recently displayed a retrospective of her artwork, reflecting the time she spent in Japan, California and Mexico.

• **Gary Griswold**

Some of watercolorist Griswold's favorite subjects are classic boats and

marine and nature scenes in the Northwest.

He is inspired by wind, temperature, the smells of nature and travels to coastal areas for his paintings.

• **Victoria Foster Harrison**

As an encaustic print-maker, Harrison creates original, one-of-a-kind prints on a warmed palette with chunky pigmented beeswax. Then, she embeds the prints onto a panel and embellishes the prints with hand-dyed silk, rusty objects, paper ephemera and mark-making.

• **Mary Lynn Laker**

Over the years, Baker has worked with fabric, mixed media, photography, paint, metal, glass and wax.

• **Gail Larson**

Inspired by visual and performing arts, Larson's paintings and collages have been accepted in local and national juried exhibits and invitational shows.

• **Marti Mathis**

The paintings and drawings Mathis creates are in a realistic style.

• **Pamela Raine**

As an accomplished watercolorist, mixed media artist and jeweler, Raine blends these diverse mediums into wearable abstract art.

• **Jackie Van Noy**

Van Noy began formal art studies at the State University College in Buffalo, N.Y. She continues to expand her visual vocabulary using collage, painting, calligraphy and drawing.

• **Sharon Zablotney**

When Zablotney retired, she started to explore the many forms of art media, including drawing, watercolor, acrylic and silver art. Sharon uses the lampwork process to transform glass into jewelry.

For more information, contact President Claudia Wicks at 206-351-2414 or email claudiawicks@msn.com.

Art Fest 2018

Port Ludlow Art League



Entry Flower Arrangement



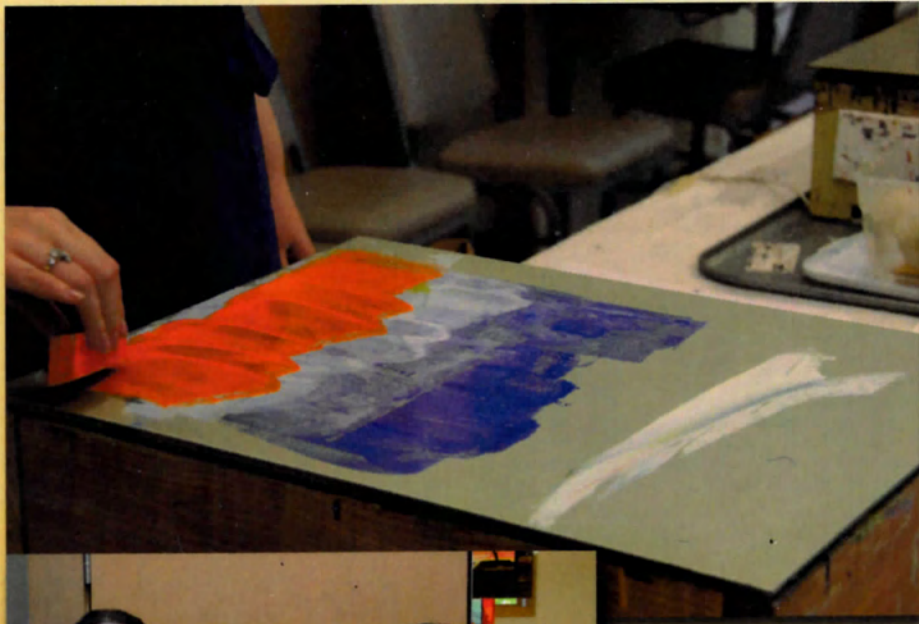
Welcome Lady



Gold Sponsors Banner

Art Fest 2018

Port Ludlow Art League



Encaustic
Process



Viv and Victoria



Viv and Patricia



Finished!

Art Fest 2018

Port Ludlow Art League



Happy Felting!



Sedona Sunset



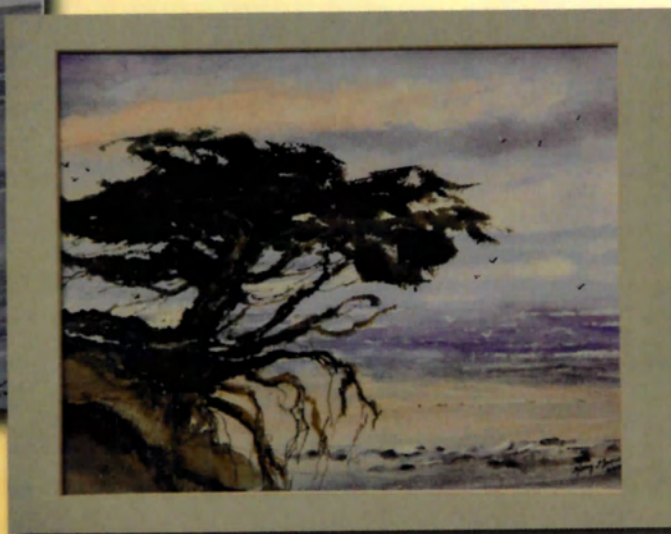
Felting Trio

Art Fest 2018

Port Ludlow Art League



Inspiration!



Watercolor Class Subject



Class Begins!

Art Fest 2018

Port Ludlow Art League



Anticipation...



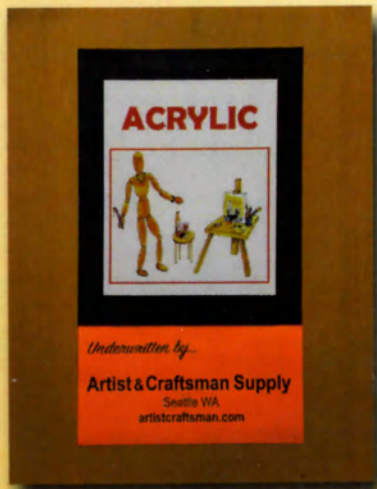
Lunch Break!



Ready to Serve

Art Fest 2018

Port Ludlow Art League



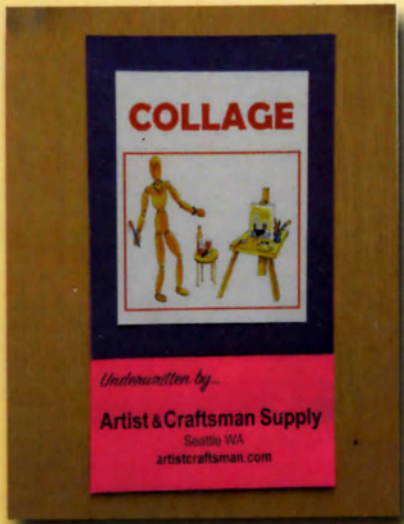
Acrylic Class Subject



Class Set-up

Art Fest 2018

Port Ludlow Art League



Collage Success!



Collage Graduates!

Art Fest 2018

Port Ludlow Art League



Festive Finish!

Port Ludlow Art League
Art Fest - May 5, 2018

June 2018

Port Ludlow Artists League Artists of the Month

Port Ludlow Bay Club Exhibit – Gary Settle, Photographic Retrospective



Super Moon Rising Beyond Port Ludlow's Marina., by Gary Settle. Submitted photo

Twice named National Newspaper Photographer of the Year, Gary Settle has been an eyewitness to social change since he was old enough to hold a camera. Gary's photographs have spanned the golden age of newspaper photojournalism. He began his career taking pictures with a 4 x 5 Crown Graphic, the news photographer's iconic camera of the mid-20th Century. Nowadays, Gary takes pictures with a digital Nikon D7000. Despite the technological advances in photography, Gary's message has always remained the same—to appreciate the power of the lens. "A camera gives you license to see something up close or even get in the door."

Gary's work, showcasing his 45-year newspaper career, along with several never-before-seen photographs, will be on display at the Port Ludlow Bay Club in June. The Bay Club is located at 120 Spinnaker Place. For more information, contact League President Claudia Wicks at 206-351-2414 or email her at claudiawicks@msn.com.

Jeanne Joseph, Port Ludlow's Artist of the Month

Jeanne Joseph studied visual communication in college and in 1980 began her own successful graphic design and advertising business in Seattle. After retiring and moving to Port Ludlow, she explored acrylics and found a niche market in painted canvas rugs.

While Jeanne continues to paint with acrylics, she enjoys drawing with colored pencils, water color pencils, and graphite—most of which reflect her love of the sea. After all, Jeanne has lived most of her life by the sea. Raised on Cape Cod, she met and married Peter, a true "seagoing



I'll Race You to the Water, by Jeanne Joseph.

Submitted photo

sailor," if ever there was one. Over the years, Jeanne has developed a true love for everything marine related. Her paintings and drawings depict all aspects of coastal living, including ships, beaches, marine life, and the many moods of the sea.

Jeanne's work will be on display at the Port Ludlow Sound Community Bank in June. A reception for her work is set for 4:00 – 5:00 p.m., **Wednesday, June 13**, in the lobby of the bank and 5:00 – 6:00 p.m. in the Art League's Gallery next door. For more information, contact League President, Claudia Wicks at 206-351-2414 or email her at claudiawicks@msn.com.

Mara Mauch, Port Ludlow's Jeweler of the Month

Mara's love of glass art started decades ago with the sound of running a score along a piece of glass, followed by the satisfying crack of two pieces breaking apart under pressure from the running pliers. Six years ago, Mara attended a three-day intensive fused glass workshop. That experience shifted her perspective of glass art. Mara learned that melting and fusing glass requires skill and imagination.



Necklace by Mara Mauch.

Submitted photo

Mara will be showing two lines of fused glass jewelry. Both incorporate the process of several kiln firings, adding multiple pieces of glass and metal films, as well as repeated fracturing and re-firing of glass layers. The first line, *views through a looking glass*, are three dimensional pieces with great depth, each layer providing a unique view. The second line, *marine flow*, brings visions of wave patterns on our summer waters in the Pacific Northwest.

Artists of the Month continued from previous page

Mara's artwork will be on display at the Port Ludlow Art Gallery in June. For more information, contact League President, Claudia Wicks at 206-351-2414 or email her at claudiawicks@msn.com.

Meet the Artists

You can meet these talented artists at the Port Ludlow Art League's Second Wednesday Reception on **June 13th** in the lobby of the Port Ludlow Sound Community Bank from 4:00 – 5:00 p.m. and next door at the Port Ludlow Art Gallery from 4:00 – 6:00 p.m. The Bank and Gallery are located at the corner of Oak Bay Road and Osprey Ridge Drive. For more information, contact League President, Claudia Wicks at 206-351-2414 or email her at claudiawicks@msn.com.

Pottery Potpourri



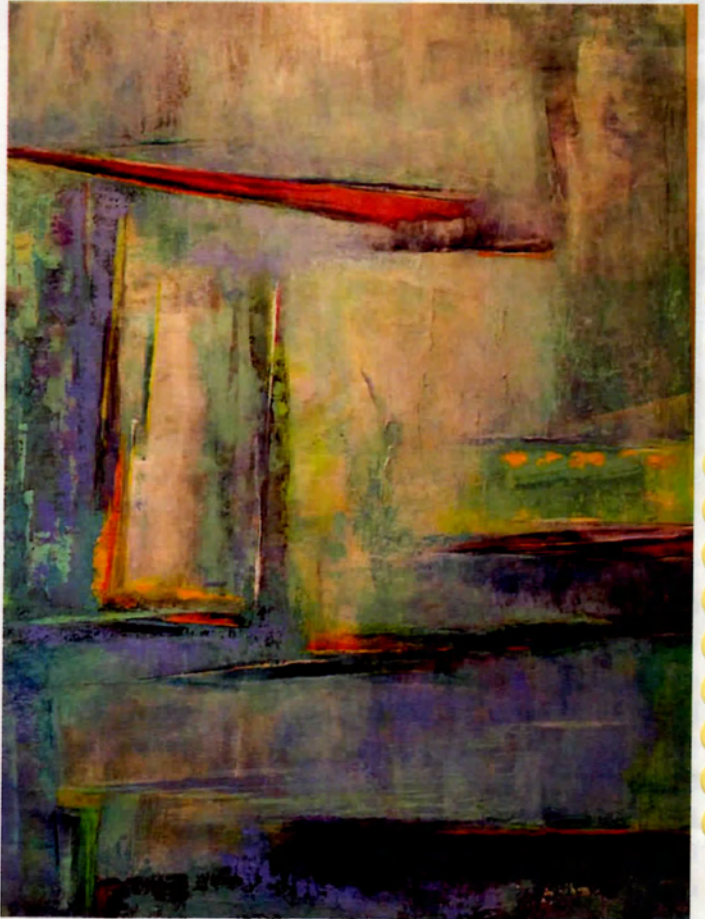
A sampling of ceramics available at Hands on Clay Open House.

Photo by Pamela Raine

The Port Ludlow Hands-on Clay artists are hosting an Open House at the Bay Club on **Saturday, June 2**, from 10:00 a.m. to 3:00 p.m. Many of Port Ludlow's ceramic artisans will have their work on display. Pieces for sale feature all manner of things you can enjoy in your garden, as well as functional tableware.

The Hands-on Clay artists are looking forward to sharing both their knowledge of ceramics and their works of art. For information, contact Pamela Raine at 206-465-5846 or pamela_raine@hotmail.com.

PLAL's June Program - Art Inspiration Everywhere



Reflecting, 30x40 Acrylic on Canvas by Patricia Webber

Submitted photo

With beauty all around us, we have unlimited inspiration everywhere, from a small still life to a grand mountain vista, but sometimes creating art from it can be daunting. It doesn't have to be.

The Port Ludlow Art League's (PLAL) June program is Art Inspiration Everywhere, presented by Patricia Webber. She will share an iterative process for seeing beyond the ordinary image to create exciting paintings, drawings, photographs, and other visual artworks. She will show examples of everyday images that were used as inspiration for several artists' work, including her own, and illustrate the progression to a finished work of art.

Patricia is an abstract artist who has exhibited her work at Northwind Arts Center in Port Townsend, and locally in Port Ludlow. She works in acrylics and photography.

PLAL Meeting continued from previous page

The Port Ludlow Art League's program meeting will be held at the Bay Club on **Wednesday, June 20**, at 1:00 p.m. Guests are welcome to attend for a \$5 donation which goes to the Chimacum High School art scholarship fund. For more information, contact Patricia Webber, PLAL vice president and program chair, at 2pw@gmx.com.

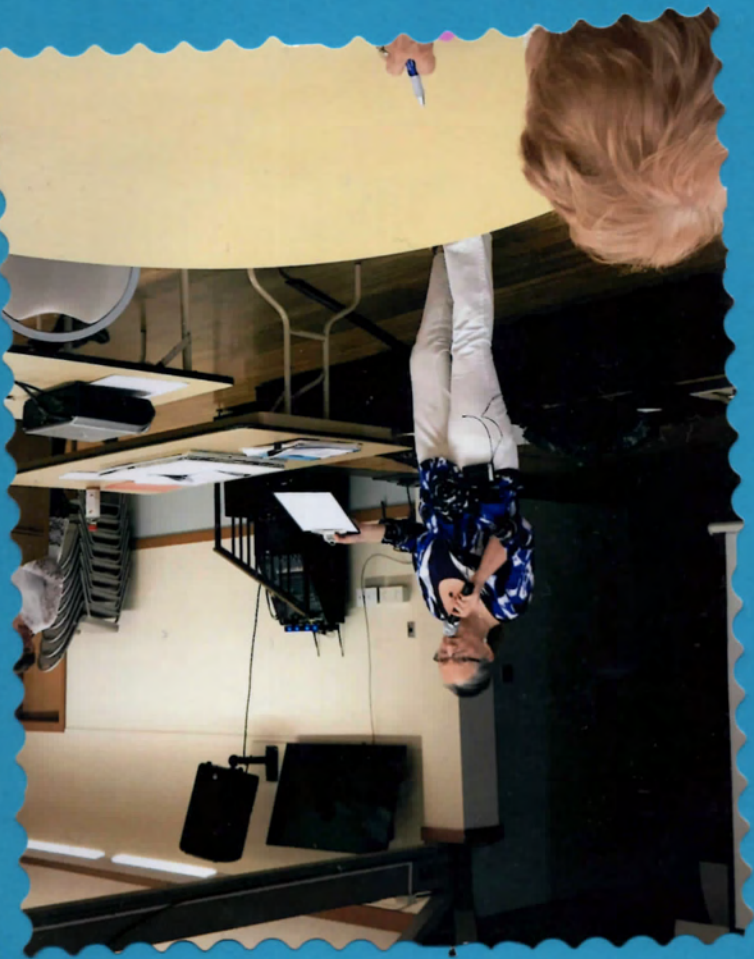


Port Ludlow Art League

GALLERY

Next to Sound Community Bank
Open: Tues Through Sat - Noon to 4 pm
www.portludlowart.com









Port Ludlow Art League Artists of the Month



Art by Cathy Thomas.

Submitted photo

Cathy Thomas – July Sound Community Bank Exhibit

Cathy's parents encouraged her to take art lessons while they were living in Japan and India. Cathy stated, "From Japan, I absorbed a love for quiet peaceful scenes. Later in India, I reveled in the bright colors brilliantly displayed on sunny days."

Though Cathy loved to paint early on, she knew being a starving artist was not a suitable career path. As a result, Cathy earned a Ph.D. in analytical chemistry and worked as a research chemist for the U.S. Geological Survey, and later as a database designer for Bell Labs and a web designer for the Quaker United Nations Office. All the while, Cathy continued to pursue her artwork, working color and design into the real-world applications of her professional life.

Cathy feels incredibly lucky to be able to see both the Puget Sound and the Cascades from her Port Ludlow home. This imagery, varying with each day's weather bringing its own mood, is integral to her meditative and artistic process.

Jeweler of the Month – Li Ding-Salopek

After immigrating to the United States from China in 2008, Li settled in Port Ludlow and soon immersed herself in the local art community, where her jewelry designs captured everyone's imagination. Her custom jewelry pieces reflect her talent for balancing the movement, contrast, and harmony



Necklace by Li Ding-Salopek

Submitted photo

the minerals that comprise her pieces even before she shapes and polishes them.

Li's latest jewelry designs will be on display at the Port Ludlow Art Gallery in July. The Gallery is located next to the Port Ludlow Sound Community Bank at the corner of Oak Bay Road and Osprey Ridge Drive.

You can meet these talented artists at the Port Ludlow Art League's Second Wednesday Reception on **July 11** in the lobby of the Port Ludlow Sound Community Bank from 4:00 – 5:00 p.m. and next door at the Gallery from 4:00 – 6:00 pm. The Bank and Gallery are located at the corner of Oak Bay Road and Osprey Ridge Drive. For more information, contact League President Claudia Wicks at 206-351-2414 or email her at claudiawicks@msn.com.

Gary Settle - Port Ludlow Bay Club Exhibition

Gary Settle's work, which was previously scheduled for June, has been rescheduled for July due to the Bay Club's remodeling schedule. Gary will be showcasing his 45-year newspaper career, along with several never-before-seen photographs. The Bay Club is located at 120 Spinnaker Place in Port Ludlow.

Port Ludlow Art League to Visit Cascadia Art Museum



Cascadia Art Museum.

Submitted photo

The **Wednesday, July 18**, program for the Port Ludlow Art League is a day trip to the Cascadia Art Museum in Edmonds to see the Roi Partridge *Northwest Landscapes* exhibit. Roi Partridge was an accomplished etcher and photographer born in the Territory of Washington in 1888. He worked and studied in Paris, Munich, San Francisco, and Seattle.

The Art League members and guests will meet at noon at the Museum's restaurant. Expect to pay about \$20 for lunch. At 1:00 p.m., there will be a docent-led tour of the Partridge

PLAL continued from previous page

exhibit followed by open access to all museum galleries. Special group admission price to the museum is \$7.

The Cascadia Art Museum is about a 15-minute walk south from the Edmonds ferry terminal. The address is 190 Sunset.

For more information, contact Patricia Webber by email at patricia98110@gmail.com.



August 1998

Port Ludlow Art League Artists of the Month

Artist of the Month – Fran Bodman



The Canoers by Fran Bodman.

Submitted photo

At an early age, Fran's parents gave her a paint-by-numbers kit, and soon her artwork appeared throughout the house. In high school, Fran majored in art and later attended the American Academy of Art, a commercial art school in downtown Chicago.

Fran's first commercial artist position was with R.H. Donnelly, the country's third largest print and online Yellow Pages publisher. Fran was responsible for putting together ads, including drawing and lettering by hand. After starting a family, and as time permitted, Fran worked as a freelance artist, subsequently pursuing a career in sales and real estate. When she retired, Fran renewed her passion for art and began taking classes in various media, including stained glass, acrylics, and watercolor.

Fran's latest passion is watercolors, which will be featured at the Port Ludlow Sound Community Bank during August. Her work has also been on display at the Port Ludlow Art League Gallery, and The Inn At Port Ludlow.



Necklace by Linda Henderson.

Jeweler of the Month – Linda Henderson

Linda has always had a keen eye for color and style. Her beautiful jewelry expresses those elements. Linda enjoys searching for unique beads, crystals, and gemstones at various gem shows and galleries, and incorporates them into her wonderful designs. Linda's exploration

has inspired her to create jewelry that is pleasing to others, as well as to herself.

Linda's current designs will be on display at the Port Ludlow Art Gallery in August.

Port Ludlow Bay Club Exhibit – Li Ding-Salopek



Selfless Love by Li Ding-Salopek.

Submitted photo

The Port Ludlow Bay Club will display a series of realistic acrylic paintings, graphic business art, and multimedia art pieces by Port Ludlow artist Li Ding-Salopek. Photographs of Li's dramatic jewelry designs will also be shown.

Li grew up in Tangshan, a city in the northeastern Hebei province of China. She attended the Center Academy of Craft & Design in Beijing and went on to teach art and design at China's Guangzhou Academy of Fine Arts. After immigrating to the United States in 2008, Li settled in Port Ludlow, and soon immersed herself in the local art community.

Li's inspiration for her artwork comes from nature, as well as world events, including people and places, and always embraces her many life experiences. "My inspiration comes from what captures my heart," Li stated.

Her artwork will be shown at the Port Ludlow Bay Club during August. The Bay Club is located at 120 Spinnaker Place.

You can meet these talented artists at the Art League's Second Wednesday Reception on **August 8** in the lobby of the Port Ludlow Sound Community Bank from 4:00 to 5:00 p.m., and next door at the Gallery from 4:00 to 6:00 p.m. The Bank and Gallery are located at the corner of Oak Bay Road and Osprey Ridge Drive. For more information, contact League President Claudia Wicks at 206-351-2414, or email her at claudiawicks@msn.com.

PL Art League Brings the Garden Indoors

Flower gardens are in full, colorful splendor in August, so it's the perfect time for a flower arranging demonstration.

Shelley O'Brien, member of the Port Ludlow Garden Club and talented flower arranger, will demonstrate and offer tips on how to artistically and beautifully arrange cut flowers from local gardens at the **Wednesday August 15** Art League's program meeting.

The League's meeting is at the Beach Club at 1:00 p.m. Guests from the Garden Club and the public are welcome to attend for a small fee of \$5, which goes to the Art League's scholarship fund.

For information, contact Patricia Webber at patricia98110@gmail.com.











September 2018

Artist of the Month - Pamela Raine at the Sound Community Bank



Akh Traces by Pamela Raine.

Pamela started her travel adventures at 16 when she journeyed to Rome with some of her high school classmates. On her recent trip to Southeast Asia, which included stays in Thailand, Laos, Cambodia, and Vietnam, Pamela was enthralled by the extraordinary art and architecture of the region. She wanted to capture and share her experiences there using various mediums, including collage, plaster, paper, encaustics, watercolors, acrylics, fibers, and clay.

Pamela's artwork will be on display at the Port Ludlow Sound Community Bank in September. The bank is located at the corner of Oak Bay Road and Osprey Ridge Drive.

Jeweler of the Month – Katie Jablonski at the Port Ludlow Art League Gallery

Before moving to Port Ludlow, Katie taught pottery, sculpture, and children's art classes throughout the United States. She is inspired by nature and the expressions of life that flow from within the materials she uses, such as bronze and aluminum, to create ceramic sculptures, tiles, and useful vessels. Her ceramic dove, whale, dolphin, and turtle cards, available at the Port Ludlow Art Gallery, spread her message of peace through artistic expression.

Of late, Katie has been working with various stones, silver casting, beading, enameling, and polymer clay to create unique jewelry designs. Katie's work will be on display at the Port Ludlow Art Gallery in September.



Earrings by Katie Jablonski.

Port Ludlow Bay Club Exhibition – Jim Ferrara

Before moving to Port Ludlow, Jim worked for 25 years as an art director and set designer for the film and television industry.



Second Beach, artist Jim Ferrara.

Submitted photo

Jim has the ability to see things in their natural form and enrich them with minimal and careful reworking, always

continued on next page

Artist of the Month continued from previous page

respectful of their original natural beauty. His many road trips throughout the Yukon, Canada, Southwest, and Pacific Northwest have inspired him to create new impressions out of natural forms.

Jim's latest artwork will be on display at the Port Ludlow Bay Club in September. The exhibit will feature a combination of several different styles and techniques utilizing visual and physical three-dimensional elements.

The Bay Club is located at 120 Spinnaker Place in Port Ludlow.

Meet the Artists

You can meet these talented artists at the Port Ludlow Art League's Second Wednesday Reception on **September 12** in the lobby of the Port Ludlow Sound Community Bank from 4:00 – 5:00 p.m. and next door at the Gallery from 4:00 – 6:00 p.m. The Bank and Gallery are located at the corner of Oak Bay Road and Osprey Ridge Drive. For more information, contact League President, Claudia Wicks at 206-351-2414 or email her at claudiawicks@msn.com.

The Inn At Port Ludlow Hosts Art Fair



Nestled on the shores of Puget Sound, The Inn At Port Ludlow will host an art fair on **Saturday, September 1**, from 10:00 a.m. to 3:00 p.m.

On the lawn at The Inn, with the marina and Olympic mountain range as a backdrop, you'll discover local artists showcasing their artwork, including woodworking, ceramics, watercolors, acrylics, and jewelry. You're sure to find something special.

The Inn At Port Ludlow is located at 1 Heron Road in Port Ludlow.

My Favorite Things: Port Ludlow Art League's 2018 Challenge

*Raindrops on roses and whiskers on kittens,
Bright copper kettles and warm woolen mittens,
Brown paper packages tied up with strings:
These are a few of my favorite things.*

--Richard Rodgers

Julie Andrews made *My Favorite Things* one of the most iconic songs of American music. The Port Ludlow Art League (PLAL) explores that theme in its 2018 art challenge on **Wednesday, September 19**, at its program meeting at the Beach Club, 1:00 p.m.

The artists will bring in their *My Favorite Things* inspired work created in their chosen medium – watercolor, pastels, oils, pottery, acrylics, mixed media, fabric, photography – to be shared and celebrated.

Then, during the month of October, the *My Favorite Things* art will be exhibited at Sound Community Bank.

Guests are welcome to attend this monthly meeting and social time. A guest fee of \$5 goes to the scholarship fund for Chimacum students. For more information, contact Patricia Webber, PLAL program chair, at patricia98110@gmail.com.















New Vision for Port Ludlow Post Office

by Evelyn Bequette, Contributing Writer

Many people were concerned about the future of the Village Center Post Office when word spread early this year that the former owner, Mike Johnston, planned to retire. Months of interior remodeling likely have eased those concerns. Fresh paint, new ceiling tiles, new carpeting, and expansion of the retail space are just the beginning of the new owner's plans. Frances Rawski has a vision for The Village Mail and More as a community gathering place, and she's enthused about the possibilities. Hours are the same: 9:00 a.m. - 12:00 p.m. and 1:00 - 4:00 p.m., Monday through Friday, and 9:00 a.m. - 1:00 p.m. Saturday.

"I'm all about the community," she says. "It would be a shame for the post office *not* to be here!"

She continues to carry greeting cards and is expanding the range of mailing supplies and services. She's also added an assortment of business supplies and services, including copying and fax transmissions, as well as notary services, and features a selection of art and gift items from local artists.

To spur conversation among customers, Frances has put up a bulletin board just inside the door at the post office. Photos and information on classic cars are dominantly displayed, and she'll welcome questions about the classic T-Bird pictured; it's hers!

Formerly an executive for Los Angeles County, Frances purchased property in Port Ludlow in 1997 as she looked ahead to retirement. For several years, she spent vacations working on the property and then started building her house, completing it in 2005. Once she settled in Port Ludlow, she became involved in the Garden Club, for

which she serves on the board, and has also written articles for the *Port Ludlow Voice*.

"This is definitely a career change," she says. "My goal is to give back to the community."











October 2018



Holiday Faire at the Bay Club

Are you ready to get your holiday shopping done? Do you dread driving into the city and bracing for the crowds? If so, make your list, check it twice, and celebrate the magic of the season at the 2018 Holiday Faire in the Port Ludlow Bay Club on **Saturday, November 3**, from 10:00 a.m. to 4:00 p.m.

This year's event will feature distinctive, hand-crafted artwork, including jewelry, quilts, photographic prints, hardwoods, cards, paintings, ceramics, and glassware. And of course, admission is free.

The Port Ludlow Bay Club is located at 120 Spinnaker Place. For more information, please contact Judy Danberg at shortline@cablespeed.com.



A sample of items available at the Holiday Faire.

Photo by Judy Danberg

Wood Sculptor Tuttie Peetz at Art League's Program

Distinguished fine arts sculptor Tuttie Peetz will show and discuss her work at the **Wednesday, October 17**, Port Ludlow Art League (PLAL) program at the Bay Club. The meeting begins at 1:00 p.m. Please note change of location.



Rogue Wave, artist Tuttie Peetz.

Submitted photo

Peetz creates exquisite, unique sculptures from found wood. Her process involves exploring the inner secrets of found wood, researching innovative techniques and ideas, and applying refined woodworking skills to create unique, one of a kind sculptures. Some of her recent work combines multiple types of wood and incorporates additional inlay processes.

Peetz visits, shares, and exchanges ideas with other sculptors and wood artisans throughout the U.S. and Canada. During her travels, she continues her quest far and wide for special woods and creative directions. She enthusiastically shares her skills and knowledge and maintains an active teaching schedule.

Her fine arts sculptures have been exhibited throughout the Northwest, and she has received high acclaim and honors. She was a featured artist in *Living on the Peninsula Magazine* and has been published in Peninsula College's *Tidepools Magazine*.

She is retired from a 25-year career in corporate finance and is the author of *Basic Budgeting and Money Management*.

Non-members are welcome to attend the program and social time for a \$5 contribution, which goes to scholarships for art students. New members are always welcome.

For more information, contact Patricia Webber, PLAL program chair, at patricia98110@gmail.com.

Port Ludlow Art League Challenge at the Sound Community Bank



Mystic Byrds by *Georgeanne Muse*.

Each year, the Port Ludlow Art League (PLAL) challenges their members to create artwork in response to a theme. This year's theme is derived from *The Sound of Music*, specifically Rodgers and Hammerstein's featured song, "My Favorite Things."

Participating artists will meet the challenge by creating artwork using their medium of choice, including watercolor, pastels, oils, pottery, acrylics, mixed media, fabric,

and photography. This lively and creative exhibit will be on display at the Port Ludlow Sound Community Bank, located at the corner of Oak Bay Road and Osprey Ridge Drive, in October.

Jeweler of the Month – Mary Lynn Laker at the Gallery

Mary Lynn has been involved in some form of art most of her life. Due to her curious nature, she always wants to know how things fit together. Over the years, Mary Lynn has worked with fabric, paper, photography, paint, wax, metals, and glass.



Wet Leaves, by *Patricia Webber*.



Jewelry by *Mary Lynn Laker*.

Encouraged by her husband, a few years ago Mary Lynn got her hands on a propane and oxygen tank and, coupled with a torch, started creating fascinating jewelry. Initially, she worked mostly with silver and copper but, over time, added stone and beads. One of Mary Lynn's first pieces was a pure silver ID tag for her dog, complete with a birthstone. Mary Lynn's pure silver kimono is one

of her favorite pieces.

Mary Lynn's jewelry will be on display at the Port Ludlow Art Gallery in October. The Gallery is located next door to Sound Community Bank.

Meet the Artists

You can meet these talented artists at the PLAL's Second Wednesday Reception on **October 10** in the lobby of the

Port Ludlow Sound Community Bank from 4:00 – 5:00 p.m., and next door at the Gallery from 4:00 – 6:00 p.m. For more information, contact League President, Claudia Wicks at 206-351-2414, or email her at claudiawicks@msn.com.

Port Ludlow Bay Club Exhibition –Photography Special Interest Group of the DigitalLife Club



Forest Delights by *Aven Anderson*.

The Photography Special Interest Group of the DigitalLife Club will display their artwork at the Port Ludlow Bay Club in October. The exhibit will feature stunning photographs from forest flora to a Maui sunset.



Lake Crescent Morning by *Jane Herzog*.

Submitted photos

The Photography Special Interest Group meets twice monthly, and presents workshops to learn camera use, composition skills, and software for enhancing photos and creating video photo shows. People of all skill levels are invited to participate in these workshops.

If you are interested in improving your photography skills, contact Dave Clive at 860-983-7662. For a schedule of meetings, email pldigitallife@live.com.

The Port Ludlow Bay Club is located at 120 Spinnaker Place in Port Ludlow.

In support of the arts

Port Ludlow Art League presents opportunities

JIMMY HALL
JHALL@PTLEADER.COM

At 111 members strong, Port Ludlow Art League serves as a group to promote local craftsmanship in a variety of avenues for the local population as well as outside even Jefferson County.

"We want to support art," Patricia Webber, the art league's First Vice President, said. "Any art helps people solve problems, work together

in groups and be creative in all sorts of ways."

To get art in the public, displays are rotating on a regular basis, including The Inn at Port Ludlow, Active Life Physical Therapy, The Bay Club, Beach Club Gallery Room, Coldwell Banker Real Estate and Olympic Peninsula Gateway Visitor Center. The Resort at Port Ludlow has a changing theme every few weeks, such as "Garden Abundance" or "Boats and Coasts," as were the themes in September.

These six locations are appendages to the main venue for the art league: the gallery next door to Sound Community Bank, which also acts as a place to display

pieces in the upper village in Port Ludlow. It is here where the Artist of the Month is featured.

League member and art curator Alan Ahtow spoke about the annual scholarship that local students apply for their senior year and can be renewed throughout their college career. Webber and Ahtow said students do not need to be pursuing a degree that is art-related, but they look for students who have an interest in some sort of art medium, as they are asked to submit three to five samples of their work with their application. Scholarship amounts range from \$500 to \$1,500 per student and is used for tuition, mandatory fees and

supplies.

To help support the scholarship, the Art League holds various fundraisers, along with collecting yearly dues. Last spring, the organization hosted an "Art Fest" at The Bay Club, where classes were held with all kinds of topics from watercolor to drawing to silk dye drying and encaustics.

"In a two-hour class, we want anyone to come in with art knowledge, or lack thereof, and create a piece of art that is finished at the end," Webber said.

Every month, whether it's a demonstration or speaker, there is a membership meeting, welcoming special guests from far and wide. These take place either at The Bay Club from January

to June, or The Beach Club from July to December.

To showcase talent, the Art League presents an "Share and Explore" event, giving a chance for members a chance to try an edium in an open environment.

"Before you put out a huge investment, it's good to give yourself an opportunity to try to see if it's something you want to invest in," Ahtow said.

Webber also spoke of an abstract art critique group that has gained popularity since its inception three years ago. She explained the group is a way for others to give their opinion and expertise to those who want the feedback. Webber shared a recent example of a newer member who was

timid about her art beforehand but went home with the Best of Show for what she contributed to the show.

"That's a person who is able to tap into some talent and become encouraged," Webber said.

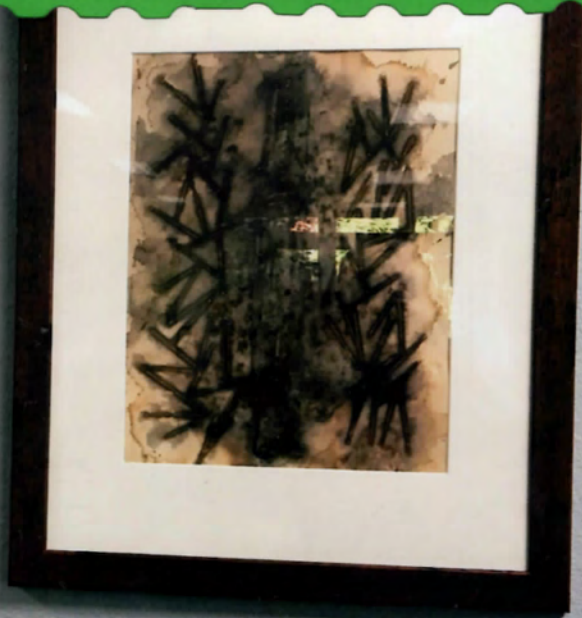
Memberships start at \$40 for a whole calendar year. With a membership, artists can attend the monthly meeting, participate in various "challenges," are allowed to show at the League-sponsored Gallery, can take part in the Merchant Exhibit program, have the opportunity to be featured as the Artist of the Month, and have a page on the Art League website. More information can be found at portludlowart.org.



Heidi Lee's graphite art of a woman was one of several pieces featured at the Port Ludlow Art League. *Courtesy photo*







"Piper and Phipps's Dress"
Red Maroon
Lace
1850s-1860s

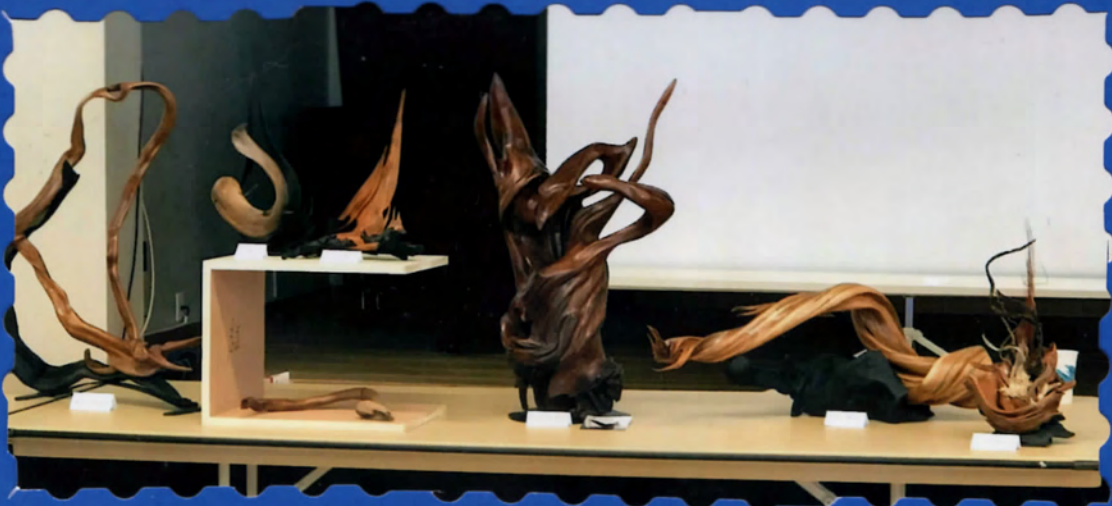


"Red Maroon"
Lace
1850s-1860s











Forest Bouquet



Nebula



November 2018

Port Ludlow Artists League Artists of the Month

Wanda Mawhinney, Port Ludlow's Artist of the Month



Landfall by Wanda Mawhinney.

Wanda lived in Tucson for 35 years before moving to Port Ludlow in 2005. Her love of color and texture drives her to create bold, abstract compositions. She trusts her intuition and lets her paintings evolve, building layers that create their own energy. A few years ago, Wanda switched from acrylics to oils. Her newest passion is folding cold wax into her oil paints to create depth which is smooth to the touch but appears to be raised texture.

Wanda enjoys not knowing how a painting is going to turn out. She either loves or hates the final piece. In the latter case, she simply paints over it and starts again. According to Wanda, "Some of those pieces turn out to be the best." Wanda's artwork has appeared in numerous juried shows, receiving a merit, a second Place, and two best of show awards.

For this month's art show, Wanda was inspired by her perennial garden. Her latest series on this subject is entitled "In the Garden of My Familiar." That artwork, along with other pieces inspired by nature, will be on display at the Sound Community Bank in November. The bank is located at the corner of Oak Bay Road and Osprey Ridge Drive in Port Ludlow.

Nancy Palsulich, Port Ludlow's Jeweler of the Month

Nancy has an extensive artistic background. As a distinguished florist, she mastered the art of coordinating colors,



Bead necklace by Nancy Palsulich.

decorations, and diverse types of plants and flowers into aesthetically-pleasing designs. As a master interior designer, she has designed event venues throughout the country.

Recently, Nancy rekindled her love of art glass and semi-precious stones, which inspired her to design jewelry and add silversmithing to her repertoire. Her inspiration for her jewelry comes from the color and light that is reflected by the stones. When designing a piece of jewelry, Nancy strives to have the piece speak directly to the observer. Occasionally, she will obtain stones that are so spectacular she leaves them lying on her workbench for months until she feels she can do them justice.

Nancy's jewelry has been on display at the Port Ludlow Inn, and Port Ludlow Art League's (PLAL) Gallery. Her current jewelry designs will be on display at the gallery, which is located next to Sound Community Bank, in November.

Pamela Raine, Port Ludlow Bay Club Exhibit

Pamela started her travel adventures at 16, when she journeyed to Rome with some of her high school classmates.

PLAL AoM continued from previous page

To Pamela, one of the best things about traveling is that every day is different.

On her recent 20-day trek to Southeast Asia, which included stays in Thailand, Laos, Cambodia, and Vietnam, Pamela was enthralled by the art, architecture, and people of the region. Pamela remarked, "My trip was a dazzling buffet for the senses."



Fluid by Pamela Raine.

Submitted photos

Best known for hosting the PLAL's Share & Explore classes, Pamela wanted to capture and share her impressions of Southeast Asia using a wide variety of artwork mediums, including watercolors, acrylics, pastels, paper, fibers, wax, and clay. Her artwork will be on display at the Port Ludlow Bay Club in November. The Bay Club is located at 120 Spinnaker Place.

Meet the Artists

You can meet these talented artists at PLAL's Second Wednesday Reception on **November 14** in the lobby of the Port Ludlow Sound Community Bank from 4:00 – 5:00 p.m., and next door at the PLAL Gallery from 4:00 – 6:00 p.m. For more information, contact league president Claudia Wicks at 206-351-2414, or email her at claudiawicks@msn.com.

Port Ludlow Holiday Faire

Are you ready to get your holiday shop on? Would you like to buy something hand-crafted rather than online from some distant country? If so, make your list, check it twice, and celebrate the magic of the season at the 2018 Holiday Faire in the Port Ludlow Bay Club on **Saturday, November 3**, from 10:00 a.m. to 4:00 p.m. Of course, admission is free.

This year's event will feature distinctive hand-crafted artwork including jewelry, quilts, photographic prints, hardwoods, cards, paintings, ceramics, and glassware. When



Some of the items available at the Port Ludlow Holiday Faire.

Submitted photo

you buy something hand-crafted, you're buying more than an object, you're buying the artist's vision and hours of joyful work that went into making it come to life.

The Bay Club is located at 120 Spinnaker Place. For more information, contact Judy Danberg at shortline@cablespeed.com.

PORT LUDLOW

**HOLIDAY
CRAFT FAIR
NOVEMBER 3**

Paintings



Jewelry



Woodworking



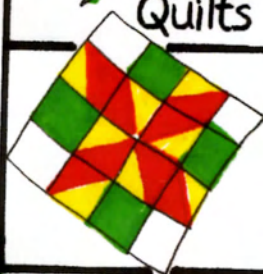
Cards



Pottery



Quilts



10 am - 3pm

Bay Club
120 Spinnaker
Port Ludlow, Washington
98365





December 2018

Port Ludlow Art League

Artist of the Month – Winter Group Show



What Lies Beneath, by Pamela Raine.

An art exhibit spotlighting Port Ludlow artists will be on display at the Port Ludlow Sound Community Bank in December. Participating artists will use a variety of mediums so no two pieces will be the same.

You can meet these talented artists at the Port Ludlow Art League's Second Wednesday Reception on **December 12** in the lobby of the Port Ludlow Sound Community Bank from 4:00 – 5:00 p.m. and next door at the Gallery from 4:00 – 6:00 p.m. The Bank and Gallery are located at the corner of Oak Bay Road and Osprey Ridge Drive. For more information, contact League President, Claudia Wicks at 206-351-2414 or email her at claudiawicks@msn.com.

Jeweler of the Month – Ginny Ford at the Port Ludlow Art League's Gallery

Ginny creates fine artisan jewelry in her design studio, Heavenly Mountain Studios. She works primarily in silver, copper, and brass and enhances these metals by creating textures and patinas using hammering, pressing, heating, and chemicals.

Ginny's favorite technique, silver reticulation, is a process by which metal is made to draw itself into ridges and valleys, creating



Fine silver with blue spinel pendant by Ginny Ford.

a unique texture. Unusual and colorful stones add depth and drama to her work. Many pieces feature clasps and ear wires that are either hand forged or made in Bali and Indonesia. Recently, Ginny has been experimenting with transparent enamels over fine silver and stencils with enamels on copper. Her one-of-a kind jewelry will be featured at the Port Ludlow Art Gallery in December.

Port Ludlow Bay Club Exhibition – Steven H. Hammond



Awaiting the Catch, by Steven Hammond.

Submitted photos

Steven has been involved with art in one form or another all his life, from drawing and sculpture to home design and commercial giftware. He strives to create artwork that captures a viewer's memories, emotions, and curiosity. Steven's work has been shown at shows in Arizona, Panama, and Washington State.

After graduating from the University of Oregon, Steven served as an Air Force fighter pilot before entering a career in corporate marketing. In 2013, he and his wife moved to Panama to experience small village living. Two years later, they moved to Port Ludlow.

Steven's exhibit at the Port Ludlow Bay Club showcases quintessential scenes from Puget Sound. The Bay Club is located at 120 Spinnaker Place in Port Ludlow.





Port Ludlow Art Gallery - Extended Hours for Holiday Shopping



As a cooperative art gallery for over 100 members, the Port Ludlow Art League Gallery features a variety of artwork by local artists. The gallery is open from noon to 4:00 p.m. Tuesday through Saturday. For the holiday season, the Gallery will be open from noon to 4:00 p.m. on the first three Sundays in December. The Gallery is conveniently located next to the Sound Community Bank, at the corner of Oak Bay Road and Osprey Ridge Drive in Port Ludlow. Stop by and shop for cards, jewelry, woodwork, ceramics, fine art, photography, and ornaments.

Chimacum Arts and Crafts Fair

The Chimacum Arts and Crafts Fair is in its 32nd year, and is the largest and longest running holiday festival in the area. With over 100 vendors from around Washington State, shoppers are guaranteed to find beautiful items made with care. Crafts include gold and silversmithing, textiles, candles, woodwork, leather works, artisan foods, clothing, and more. The fair will be held on **Saturday and Sunday, December 8 and 9**, from 10:00 a.m. until 4:00 p.m. each day. There is an admission charge of \$3.

The 4th Chimacum holiday portrait by David Conklin, and the opening ceremony will be held at the entrance to Chimacum High School on **Saturday, December 8**, at 9:50 a.m.—all are welcome to join. The festivities will start at 9:30 a.m., and while the community gathers, the Chimacum High School Marching Band will serenade the crowd as the fair kicks off.

Each year over 100 students from the Chimacum School District contribute countless hours to make the fair possible. Student volunteers help with marketing, set up, assisting vendors, hosting booths, making and selling crafts, and much more. The fair showcases the

collaborative spirit of East Jefferson County and Chimacum High School, while raising money for school programs, supporting the artisan-maker economy, providing a marketplace for youth and nonprofit program fundraisers, and building community.

If you would like to learn more about this fun and festive tradition, visit chimacumarts.com.





Cascadia Art Museum
190 Sunset Ave #E
Edmonds, WA 98020

Guest Statement

10/26/2018 12:07:26 PM

Port Ludlow Art League
120 Spinaker Place
Port Ludlow, WA 98365

2018 Anniversary Gala

Bid # 401	Table #	Statement # G8252018401
Event Date: 8/25/2018		Federal Tax I.D. # 0047-2733144

Cat. #	Cert.	Item Name	Qty.	Fair Market Value	Amount
		Donation	1	\$0.00	\$100.00
Total Amount Due:					\$100.00
Total Amount Paid:					\$100.00
Remaining Balance:					\$0.00

This organization has been granted not-for-profit status under section 501 (c) (3) of the Internal Revenue Service code. Accordingly, contributions made to the organization are deductible for federal income tax purposes subject to the following. All contributions must be supported by this receipt. Such deduction is also limited to the excess of the amount paid for the item(s) over the fair market value. This is a good faith estimate by our organization and may not reflect "fair market value". In any event, we encourage you to consult your tax advisor regarding deductibility to you.

Thank you!
Julie Long



11-7-18

Pamela,

Thank you again for supporting
Port Ludlow Performing Arts in their
28th season.

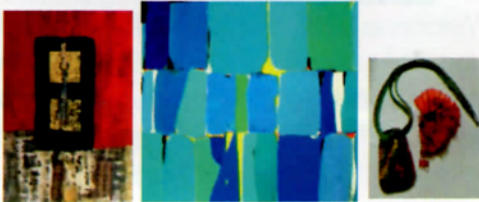
You will find the ad for
Port Ludlow Art League on page 4 of the
attached program.

Sincerely,
Cheri Yeustinger
PLPA board member

Port Ludlow Art League

GALLERY

In the upper village next to Sound Community Bank



**Open: Tuesday through Saturday
12 noon to 4 p.m.**

*Meet the artists at a reception
the second Wednesday of each month
4 to 6 p.m.*

www.portludlowart.org



Dear PAA members & board -
I so appreciated the out-
pouring of good wishes
& prayers sent my way by
texts, emails, calls & cards.
Our family is very good &
very generous.

I am well & though I have
another procedure to
navigate, I am happy to be
getting back to normal
routine.

Thank you all for
your words of support!

Carol

P.S. Please accept my (late) card
fee.



