



Jeanne Joseph of Port Ludlow (right) helps Christina Smith of Port Angeles with a tricky sweater. Smith, a new mother, had never tried on such pretty clothing before. She recently landed an office job that requires better attire.

Not only did volunteers Jeanne Joseph and Martha Olbrych bring her clothing to try on, they offered accessories, including necklaces and scarves.

When Olbrych put a gold chain on her, Smith said, "It makes me feel like Cleopatra."

"They're all different than what I'm used to wearing. I don't wear skirts, but I'm walking away with a skirt."

Smith said her youngest child is 3 years old, so she's been wearing clothes that are OK to be "spit upon."

Volunteer Joseph also was enjoying the session.

"I love dressing people and making them feel wonderful," said the retired graphic artist. "They come in and say, 'I don't know what I like' and they go out with a smile on their face."

"Tell me what you are missing," said Joseph to Smith after a pile of clothes was gathered outside a dressing room in a "to keep" pile.

"Nothing," said Smith looking up at all the free clothing.

"Leggings," suggested a volunteer, who noted that it's cold out and they could be paired with all kinds of things.

Smith walked out with armfuls of new clothing, a wardrobe she said she would never have been able to buy. She seemed elated.

And that made the volunteers and Hickman happy.

# THANK YOU



**SOUND**  
COMMUNITY BANK

Simply better here.

[www.soundcb.com](http://www.soundcb.com)



Thank you very much for  
your gifts of hand crafted  
jewelry! We appreciate your  
thoughtfulness!

Sharon  
Dena  
Sharon

Juli

Melanya

Sharon

## The Art Raffle

Thank you to everyone who bought tickets and participated in 2014's Art Raffle sponsored by the Port Ludlow Artists League. We were able to raise over \$2000 for our scholarship fund, which has already donated over \$20,000 over the last eight years to graduating Chimacum High School students going on to study the "creative arts."

Watch this spot for more information on the **2015 Art Gala** to be sponsored by the League later this spring.

Here's the League's most recipient scholarship recipients:

**Eilena Sharpe** is in her second year pursuing a degree in art from Cornish College of the Arts. "Art has always been a better way of communication for me," she says. In addition to her passion for art, Eilena is an avid horsewoman who participates on the Equestrian Team.

**Morgan Music** is also in her second year studying music at Eastern Washington University. Her long term goal is to become a band director.

**Rosaletta Curry**, was graduated magna cum laude from Ithaca College in Ithaca, NY. She is continuing her studies in London this fall.

**Jarrett Hansen**, now in his senior year, has received a PLAL scholarship all four years of his also in his study of music at Central Washington University.



## Art, Soup and Treasures!

January is cold, wet and dreary but there is a bright spot coming in the middle of the month for Port Ludlow Artists' League members. The general meeting is on **Wednesday, January 20, 1:00 p.m.** at the Bay Club where the League will continue its tradition of serving hot soups while creating greeting cards. The League's Sunshine Committee uses the cards during the year. It's fun to see the artists at work, and the cards that come out

of this event are imaginative and inspiring. Artists are to bring their own favorite tools and mediums and the League provides the blank card stock.

Added to the mix this year, and in keeping with the "*Endings and Beginnings*" theme of the January Group Show at Sound Community Bank, will be a white elephant table where participants can bring art items to trade, sell or donate. Here's a call to clean out your studio of items not needed or wanted – someone's ending can be someone else's beginning of a new interest, medium or technique.

Guests are welcome to attend this monthly meeting and social time. A guest fee of \$5 may be paid for an individual meeting or dues of \$30 will provide a year of inspiring programs for art lovers and artists of all levels. More information can be obtained by contacting President Judy Danberg at 360-473-7999, or by email at [shortline@cablespeed.com](mailto:shortline@cablespeed.com).



## PLAL's January meeting

### ***Soup's On!***

The best way to spend a chilly afternoon is a bowl of soup and a little stay inside creative project; add to that a mix of good friends and artists, and Voila! What could be better? The Port Ludlow Artists' League traditional meeting for January is a crockpot of hot, homemade soup along with little creative bursts on note cards. Barring heavy snow the League members will be meeting at the Bay Club, making original cards for both their Sunshine Committee as well as cards to be sent to our armed forces serving outside the country. Having a special card to send back to their loved ones creates a lot of joy for the giver and the recipient.

So, all you artists out there, brave the cold, bring your favorite paints, colored pencils or paper and glue, and be prepared to add color to the blank cardstock provided by the League. Start your new 2015 calendars with the meeting on Wednesday, **January 21st** from 1:00 – 3:00 p.m. at the Bay Club. Guests are welcome to attend this monthly meeting, joining in the fun and social time. A guest fee of \$5 may be paid for an individual meeting or dues of \$30 will provide a year of inspiring programs for art lovers and artists of all levels.







## Artists' League Group Show Held Over



Waiting for the Night to Begin, stained glass by Barbara Reichart.  
Submitted photo

The Port Ludlow Artists' League Group Show titled "Endings and Beginnings," continues through January in the lobby of Sound Community Bank, Oak Bay Road. The participating artists have depicted their visions of the theme in a variety of mediums – paintings in watercolors, acrylics, oils, block prints, collage, and stained glass. These artists have captured the close of one cycle and the beginning of another with variety of subjects and imagination. As always, when the League puts on a "group show," the best of artistic talent is presented and the viewer leaves much the richer for having seen it.

The Second Wednesday Reception on **January 13** will salute the League artists, both at the Sound Community Bank and the Gallery, newly refurbished and adjacent to the bank. The bank lobby will be open from 4:00 – 5:00 p.m. for the "Endings and Beginnings" show while the Gallery will be open from 4:00 – 6:00 p.m. Please join the League in a toast to the New Year; may it be filled with health, happiness and great art!

More information can be obtained by contacting League President, Judy Danberg at 360-473-7999 or by email at [shortline@cablespeed.com](mailto:shortline@cablespeed.com).

## PLAL presents 'Endings and Beginnings' Dec. 9

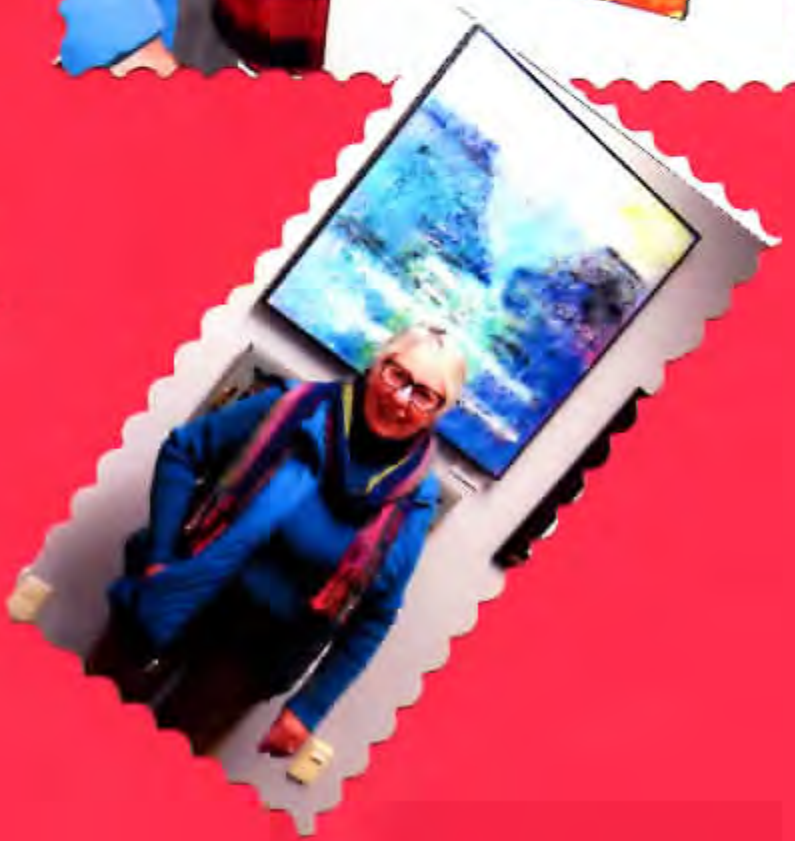
The Port Ludlow Artists League presents a group show, "Endings and Beginnings," in the lobby of Sound Community Bank on Oak Bay Road during December and January.

Each work in the thought-provoking collection interprets the theme presented in the show's title via a variety of mediums and a wide range of subjects. This is the first showing for many of the league's new members.

The Second Wednesday Reception salutes the artists from 4 to 5 p.m., Wednesday, Dec. 9 in the bank lobby, with the party relocated to the gallery adjacent to the bank from 5 to 6 p.m. All are welcome to join in the festivities, have a glass of wine, some nibbles and visit with the artists – a great way to get to know your way around the world of art.

For more information, contact Sharon Zablotney at 437-9417 or by e-mail at [slz2002@q.com](mailto:slz2002@q.com).







## Leilani Wilds is February's Artist of the Month



*Tyjungus, by artist Leilani Child Wilds.*

Submitted photo

It's Leap Year and a great month to showcase the art of Port Ludlow Artists' League's new member, Leilani Child Wilds. From **February 1 - 29**, Wilds' art will grace the walls of Sound Community Bank. Her varied use of many mediums and techniques has truly earned her a description of "renaissance" artist.

Before coming to Port Ludlow, Wilds was a registered nurse and then the administrator for the Wilds' veterinary hospitals. The three hospitals and clinics in the Riverside, California area earned her a long-term series of shots for her allergies to cats, dogs, and horses!

In preparation for retirement, Wilds went back to school at California State University, Riverside, for her undergraduate degree, and then to Claremont Graduate University where she earned her Master of Fine Arts. She says that one of the best classes she took there was one called "Methods and Materials" which covered the processes of different forms of art, allowing her to explore a vast array of mediums and techniques and discover her strengths and preferences. Painting with watercolors and acrylics, pastels, pouring dye on silk, sculpture, ceramic, print-making, and fused glass were some of the art forms that spoke to her inner artist. Before the internet revolution, she researched and experimented with ways of adhering her dyed silks to backing and found a 3,000 year old recipe for rice paste that worked perfectly.

Since childhood, Wilds says she has endeavored to duplicate in art that which she sees around her. Her artistic inspiration usually comes from nature. Each piece this multi-talented artist produces has layers of meaning for

her and she hopes the viewer "will see something that speaks to them and which can give them long-term enjoyment." It is not necessary that the viewer "get it;" it is the personal delight they get from viewing her art that makes her happy.

Please join League members, friends and the community in honoring Leilani Wilds at the **Second Wednesday Reception on February 10**, from 4:00 to 5:00 p.m. in the lobby of Sound Community Bank, Oak Bay Road, Port Ludlow, and concurrently, from 4:00 to 6:00 p.m. in the newly refurbished League Art Gallery adjacent to the bank where a glass of wine toasts the new collection of art by League members. More information can be obtained by contacting League President, Judy Danberg, 360-473-7999 or by e-mail at [shortline@cablespeed.com](mailto:shortline@cablespeed.com).



*Self Portrait Leilani Wilds*

Each piece this multi-talented artist produces has layers of meaning for her but says all that she hopes for the viewer is that they see "... something that speaks to them and which can give them long-term enjoyment." It is not necessary that the viewer "get it;" it is the personal delight they get from viewing her art that makes her happy.



## Artists' League

PORT LUDLOW — The Port Ludlow Artists' League presents Leilani Child Wilds as their Artist of the Month, showcasing her artwork during February.

Artists, art lovers and the community are invited to meet Wilds at the Second Wednesday Reception in the lobby of Sound Community Bank this Wednesday.

This meet-and-greet is from 4 p.m. to 5 p.m. It will then move to the gallery adjacent to the bank.

The bank is located at the intersection of Oak Bay and Paradise Bay roads.

Wilds paints with watercolors and acrylics; she uses pastels and pours dye on silk; she sculpts and creates with ceramic; she also is into print-making and fusing glass.

For more information, contact League President Judy Danberg at 360-473-7999 or [shortline@cablspc.com](mailto:shortline@cablspc.com).

*Peninsula Daily News*





## Artists' League Presents Gary Faigin, Artist, Historian and Popular Speaker

The Port Ludlow Artists' League welcomes Gary Faigin, co-founder and artistic director of Gage Academy of Art in Seattle, to its February General Membership meeting on **Wednesday, February 17**, at 1:00 p.m. at the Bay Club. Faigin has a long and distinguished career as a studio art instructor, educator, painter, author, and Western art historian.

Faigin will present "Caravaggio: The Bad Boy who Rewrote Art History." If you've never heard of Caravaggio, you are not alone. Caravaggio (1571–1610), Italian painter famous for his dramatic use of lighting, was all but forgotten after his death, but had a formative influence on such great masters as Rubens and Rembrandt. Faigin will bring his enthusiastic and engaging speaking style to tell the story of this "Bad Boy" of art history.

Sublime master of realism inside the studio, incorrigible delinquent on the outside, the Baroque artist Caravaggio embodied contradiction. His spectacular paintings changed art history, but his violent personal life brought his life to an untimely end. Gary Faigin will discuss why the art of Caravaggio had such an explosive impact on painters of his time, and how his familiarity with the life of the streets made his canvases so dramatic and so real.

Gary Faigin studied at the Art Students League of New York, the National Academy of Design, School of Visual Arts, Parsons School of Design, and the famed École Nationale Supérieure des Beaux-Arts in Paris.

*Artists' League continued from previous page*

Since the publication of his landmark book in 1991, *The Artist's Complete Guide to Facial Expression*, Faigin has taught expression workshops to plastic surgeons, cosmetic dentists, forensic artists, portrait artists, as well as professionals in the animation, modeling and gaming industries. Faigin currently lectures in the Animation Department at University of Washington, as well as collaborates on research at UW. Faigin has exhibited widely with solo exhibitions in Seattle and Santa Fe, including a retrospective of his work at Seattle's Frye Art Museum and the Coos Museum of Art in Oregon.

Guests are welcome to attend this monthly meeting and social time. A guest fee of \$5 may be paid for an individual meeting or dues of \$30 will provide a year of inspiring programs for both art lovers and artists of all levels. For more information, contact Patricia Webber, PLAL program chair, at [2pw@gmx.com](mailto:2pw@gmx.com).



Gary Faigin

co-Founder and Artistic Director of Gage Academy of Art in Seattle.

He has a distinguished and wide ranging career in the arts, as a teacher, author, promoter, critic, lifelong learner, and an accomplished artist.

As an artist,

He studied New York and Paris.

He exhibited widely with solo exhibitions in Seattle and Santa Fe, including a retrospective of his work at the Frye and the Coos Museum of Art in Oregon.

As a teacher,

Faigin taught for many years in the major art schools in Manhattan –Art Students League, National Academy of Design School of Art, Parsons School of Design, the School of Visual Concepts, and New York Academy of Art.

His long and distinguished career as an art instructor combines classical principles of fine art, Western art history, unique demonstrations and visually-comprehensive lectures into his studio teaching practice.

In 1991, Faigin and his wife Pamela Belyea, moved to Seattle and founded the Gage Academy of Art, where he both teaches and serves as Artistic Director.



In 1991, Gary Faigin's "*The Artist's Complete Guide to Facial Expression*" was published and became the standard reference book on the expressive face for artists around the world.

The book went on to become a classic reference for professional animators, including artists working on *Shrek* and *Lord of the Rings* and many more.

Cartoonists, portrait artists, forensic artists, puppeteers, actors, clowns and art directors, as well as special education teachers, speech/language pathologists, occupational therapists, psychologists and plastic surgeons.

Since the publication of this landmark book, Faigin has taught expression workshops to plastic surgeons, cosmetic dentists, forensic artists, portrait artists, as well as professionals in the animation, modeling and gaming industries.

Faigin currently lectures in the Animation Department at University of Washington, as well as collaborates on research at UW.

As a promoter and observer of historic and contemporary art in the Northwest, Faigin serves on the Board of Director of the [Cascadia Art Museum](#) in Edmonds and is a Seattle Times guest art critic.



## Patsy Cline Tribute Cabaret Sold Out in One Day

By Barbara Wagner-Jauregg, Guest Writer

Holdes of season subscriptions to Port Ludlow Performing Arts (PLPA) Honky-Tonk Cabaret on **Friday, February 19**, at the Bay Club, not able to attend the sold-out show, are reminded to either gift their tickets to friends or donate them to PLPA for resale. Notify Diane Purdy at [gpurdy@cablespeed.com](mailto:gpurdy@cablespeed.com) so that the waitlisted people can be accommodated. Subscribers donating their tickets are sent a letter for their tax records.

PLPA's Honky-Tonk Cabaret will feature singer-song-writer Sara Catherine Wheatley of Nashville singing Patsy Cline favorites. All seating will be at round tables. No-host bars will dispense wine by the bottle or glass, bottled beer, and water. Bar snacks will be on the tables.

Listening to songs performed by Patsy Cline, Dolly Parton, Emmy Lou Harris, Linda Ronstadt, and the like shaped Wheatley's voice. She first performed Cline in 2005 at a community theater in Tuscaloosa, Alabama. This past July, she was cast to play "*Always...Patsy Cline*" on Hilton Head Island in South Carolina.

In Portland, Oregon, Wheatley spent seven and a half years playing Cline in the Broadway Rose Theatre Company's production of the play that was based on a true story of Cline's friendship with a Houston housewife. It sold out every performance.

Port Ludlow Artists' League (PLAL) members, printmakers Randy and Sallie Radock will exhibit original works of art on their unique handmade papers. The Radocks' designs are often inspired by their travels. The exhibit can be enjoyed either before the concert or during intermission.









## An Ending and a New Beginning

by Bev Ruthenborg, Arts & Entertainment Editor

In the late 1980s while my husband and I were living on Bainbridge Island, I read about something called "Concerts in the Barn." Intrigued, I wanted to find out more, so one weekend we traveled to a remote pastoral place called Quilcene. There we had a wonderful afternoon picnicking and enjoying world-class chamber music in a rustic barn.

The Olympic Music Festival (OMF), a short 15-minute drive from Port Ludlow, has been an important part of my summer activities ever since. Wanting to share the experience, for many years, I organized an event called Port Ludlow Day at the Barn. The first (sometime in the 90s) drew a crowd of about 60 people. We enjoyed an *al fresco* picnic and then moved into the barn for the music. That tradition continued for many years ending last summer.

I became acquainted with Alan Iglitzin, owner of the farm, founder of OMF, and a violist with the Philadelphia String Quartet—the original performers. I served as a member of the festival's board for several years. The quarterly meetings were often held in the original farmhouse on the property—a gracious and charming place—filled with wonderful memories. Sometimes we would meet at the Cookhouse at the end of the road not visible from festival grounds. There we would be treated to a delicious lunch prepared by the chef who fed the summer's musicians.

So it was with very mixed emotions that I heard of the festival's impending move to Fort Worden's Wheeler Theatre—another place I know well. The new season will begin on **Saturday, August 13 through Sunday, September 11**—a much shorter one than in the past. I hope it can be extended in the future.

Artistic Director Julio Elizalde has presented some amazing and exciting performances during the recent years that he has been involved, and I'm sure that will continue in the future. I will miss my favorite hay bale in the barn, the picnic tables under the majestic old trees and my weekend trek to meet friends at OMF, but, hopefully, the new venue will provide a setting and an ambience to equal our beloved experiences in Quilcene. Yes, my heart is heavy as I write this, but I know that change is inevitable. May OMF continue its successful musical experiences in its new home.





"Magnolia Buds" by Rita Hollingsworth.



## Botanical Artist Rita Hollingsworth Feted



Squash Blossoms, by artist Rita Hollingsworth.

Submitted photo

The Port Ludlow Artists' League (PLAL) Rita Hollingsworth will be center-stage during the month of March as the featured Artist of the Month. Her botanical paintings give the viewer an up-close look at flowers and plants that sometimes go unnoticed until their beauty is brought into focus by her pencils and brushes. Her vibrant yet subtle canvases capture the heart and soul of nature at its best.

Hollingsworth grew up in the San Joaquin Valley amidst the peach and walnut groves of her family's farm. Drawing most of her life, she attended California College of Arts and Crafts for three years before pursuing other interests. Moving with her husband to the Pacific Northwest in the 1970s, she balanced several family businesses while learning more about botanical illustration. During these years, she took many workshops on landscape drawing and painting and eventually started oil painting again under the guidance of Diane Ainsworth. In the last ten years, Hollingsworth has shown her artwork in many Jefferson County venues, including Gallery 9 in Port Townsend and the PLAL Gallery here in Port Ludlow.

Since 1980, Hollingsworth and her husband have lived a little above the Chimacum Valley in a house planned and built by them with timber harvested from trees felled during the 1979 windstorm. They are surrounded by woods and gardens. Her surroundings are "very informal and always with a touch of whimsy—like those volunteers that come up in the middle of the garlic patch. This year it was dill and violets—lots of violets, which we are eating in our salads." Hollingsworth shares those passions in her art.

All are invited to the Second Wednesday Reception on **Wednesday, March 9**, in a salute to Hollingsworth and her artwork in the lobby of Sound Community Bank, located in the upper village at the corner of Oak Bay Road and Osprey Ridge. The bank lobby will be open from 4:00 to 5:00 p.m., while the gallery will continue the celebration from 4:00 to 6:00 p.m. Please join PLAL with a glass of wine and light hors d'oeuvres and meet other league artists and friends. More information can be obtained by contacting league president, Judy Danberg at 360-437-0342 or by email at [shortline@cablespeed.com](mailto:shortline@cablespeed.com).





## Botanical artist feted March 9 in Ludlow

This March, Rita Hollingsworth is Port Ludlow Artists' League's featured Artist of the Month.

Her botanical paintings give the viewer a close look at flowers and plants.

Hollingsworth attended California College of Arts and Crafts for three years and moved to the Pacific Northwest in the 1970s.

### Artist feted

PORT LUDLOW — Rita Hollingsworth will be center stage this month as the Port Ludlow Artists' League's featured Artist of the Month.

Her botanical paintings give the viewer an up-close look at flowers and plants that sometimes go unnoticed until their beauty is brought into focus by her pencils and brushes, according to a news release.

Her vibrant yet subtle canvases capture the heart and soul of nature at its best.

The public is invited to the Second Wednesday Reception this Wednesday in the lobby of Sound Community Bank, located in the upper village at the corner of Oak Bay Road and



"Squash Blossoms" by Rita Hollingsworth. Courtesy image

She started oil painting again under the guidance of Diane Ainsworth.

Meet Hollingsworth at the Artists' League's Second Wednesday reception, 4-5 p.m., March 9 in the

lobby of Sound Community Bank, on Oak Bay Road and Osprey Ridge, Port Ludlow. The reception continues until 6 p.m. in the Artists' League gallery next door.





## Encaustic printmaker speaks in Ludlow

The art of encaustic painting, which is created using beeswax and colorful pigments, dates back several millennia, but local artist Victoria Foster Harrison creates contemporary, abstract images with encaustic techniques.

Harrison brings her creative energy, skill and inspiration to the Port Ludlow Artists' League meeting at 1 p.m., Wednesday, March 16 at the Port Ludlow Bay Club.

Encaustic printmaking involves touching chunks of pigmented beeswax to a warmed

Port Townsend & Jefferson County Leader

Wednesday, March 9, 2016 • B 3

aluminum palette, then manipulating the melted wax with a variety of strokes and tools.

Harrison embraces the Japanese theory of wabi-sabi, of finding the "beauty of things imperfect, impermanent and incomplete" — wrinkles, spots and blobs are welcomed elements in her work. She likes the free-flowing nature of this process, which she describes as "joyous, fast and simply a blast."

She offers workshops in her home studio; visit [VictoriaFosterHarrison.com](http://VictoriaFosterHarrison.com).

Guests are welcome to attend monthly meetings of the Port Ludlow Artists' League for a guest fee of \$5. Annual dues are \$30. For more information, contact Patricia Webber at [2pw@gmx.com](mailto:2pw@gmx.com).









## Artists' League Learns About Contemporary Encaustic Printmaking

Encaustic painting, which utilizes beeswax and colorful pigments, dates back several millennia, but local artist Victoria Foster Harrison creates contemporary, abstract images with encaustic techniques, modern tools, and fresh ideas. Ms. Harrison will bring her creative energy, skill, and inspiration to the Port Ludlow Artists' League (PLAL) general membership meeting on **Wednesday, March 16, 1:00 p.m.**, with a presentation on the encaustic printmaking process.

Encaustic printmaking involves touching chunks of pigmented beeswax to a warmed aluminum palette, then manipulating the melted wax with a variety of strokes and tools. It is both a contemplative exploration as well as fast-paced. She embraces the Japanese wabi-sabi theory of finding the "beauty of things imperfect, impermanent and incomplete" – wrinkles, spots and blobs are welcomed elements in her work. Harrison is particularly interested in this process as it is very free flowing, which she describes as "joyous, fast and simply a blast."

Harrison is represented by Bainbridge Arts & Crafts Gallery on Bainbridge Island, and is a member of Women Painters of Washington, International Encaustic Artists, the Northwind Gallery in Port Townsend and Port Ludlow Artists' League.





## Encaustic Artist, Victoria Foster Harrison

by Linda Karp, Regional Arts Editor



Red Hot, by Artist Victoria Foster Harrison.

Submitted photo

Victoria Foster Harrison moved to Port Ludlow in 2013 with her husband Steve, into Greenview Village, in an effort to find a better space for their creative endeavors. By early summer of 2015, they had transformed a bedroom and storage room into a 700-square-foot studio for her artistic endeavors: a sunny room with a view of the garden.

Harrison began her art career as a watercolorist and large-scale contemporary landscape artist. In 2010, she was introduced to encaustics by an art supply store owner on Bainbridge Island. She was completely hooked by 2012, taking an encaustic monotype course in Santa Fe, NM.

Encaustic paint was first used over 5,000 years ago in Greece when the Greeks used wax to seal their ships. Encaustic derives from the Greek word, "enkaustikos," meaning to burn in, referring to fusing layers of wax to a substrate, usually wood. The oldest surviving encaustic works are 2000 years old. These are the beautiful and realistic Fayum funeral portraits from Egypt.

Many artists revived encaustic painting in the mid-1900s. The most common encaustic paintings today are created with commercially made pigmented wax, melted and applied in layers on a firm substrate such as a cradled panel. Harrison works with this type by combining layers of beeswax, hand-dyed silk, and rust.

Harrison is specifically enamored by the contemporary encaustic printmaking process. Encaustic printmaking involves touching chunks of pigmented beeswax to a

*continued on next page*

*Encaustic continued from previous page*

warmed aluminum palette, then manipulating the melted wax with a variety of strokes and tools.

A sheet of Japanese paper is laid on the wax and once the paper is lifted off, the image is embedded into the paper thus creating an original, one-of-a-kind print. The process lends itself to the abstract, but can easily include landscapes and plant/tree forms as well. Harrison is particularly interested in this process as it is very free flowing—fast and "simply a blast."

The artist embraces the Japanese wabi-sabi theory of finding the "beauty of things imperfect, impermanent and incomplete"—wrinkles, spots and blobs are welcomed elements in her work. A collector once described her abstract work as "Admiring your artwork is like seeing shapes in the clouds."

Harrison is represented by Bainbridge Arts and Crafts Gallery on Bainbridge Island, and is a member of Women Painters of Washington, International Encaustic Artists, the Northwind Gallery in Port Townsend, and Port Ludlow Artists' League.

Workshops are available in her home studio for artists and non-artists. More information can be found at [VictoriaFosterHarrison.com](http://VictoriaFosterHarrison.com).



## Warm to the Heat of Latin Grammy Nominee Quattrosound

by Barbara Wagner Jauregg, PLPA Publicity Manager

To experience Quattrosound is to take an exciting journey through music. This innovative acoustic-based ensemble skillfully blurs the lines of music genre boundaries, blending Latin, pop, jazz and classical crossover. Nominated for a Latin Grammy in 2013 for "Popzzical," Quattrosound's debut CD is a musical experience that is as fun as it is brilliant.

On Friday, March 18, Port Ludlow Performing Arts presents four accomplished musicians who are equally as astute at playing a classical piece by Bach as they are at rocking out to Led Zeppelin or Chick Corea's *Spain*. Bay Club doors open at 6:15 p.m. for subscribers, benefactors, and the evening's volunteers to preselect seats; general admission is at 6:30 p.m. The concert begins at 7:30 p.m.

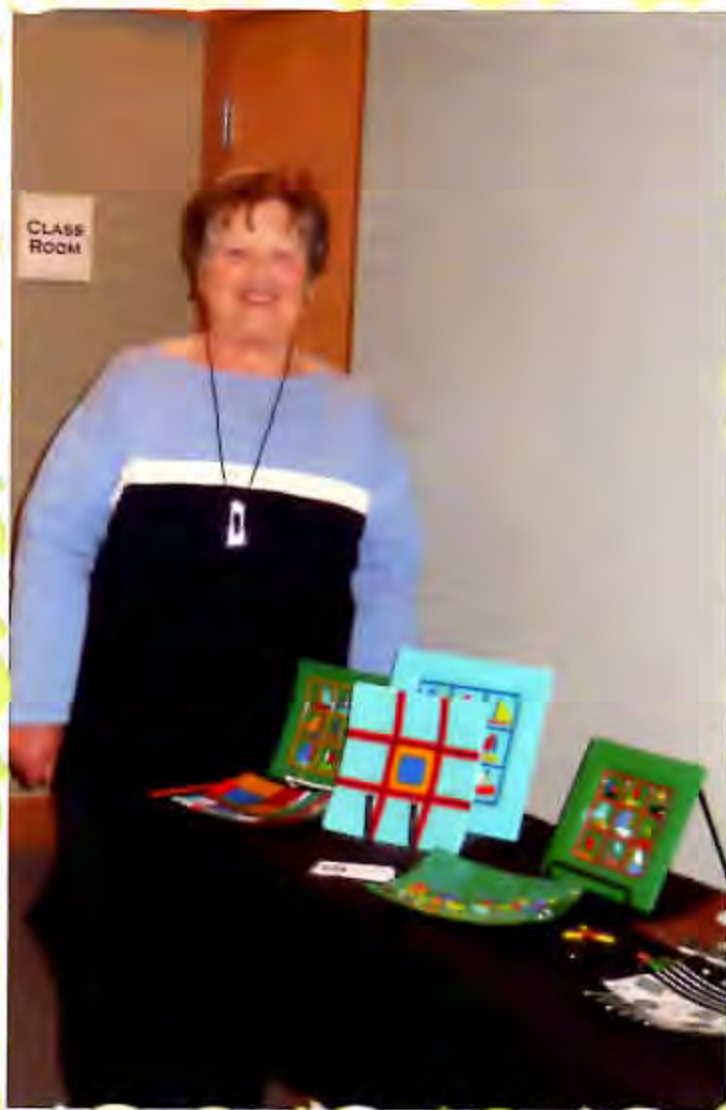
Hailing from Japan, Mexico, Guatemala, and Texas, Quattrosound's professionally-trained musicians are masters of their trade. The ensemble combines violin, cello, guitars and percussion with sparkling lead vocals and four-part harmonies. The four found each other in the rich multicultural film/soundtrack recording studios, orchestras, and live performance worlds based in Los Angeles. Together, they create a unique musical experience with impressive technicality that brings audiences to their feet at every performance.

Artists' League members Judy Thomas and Jim Watson-Gove will provide an exhibit of fused glass and abstract paintings in conjunction with the concert. Thomas first began taking ceramic classes in Bellevue when her children were small. She now has been working with glass for about 15 years. Extensive visits to art museums and galleries in the U.S. and Europe have fueled her interests primarily in modern art and abstraction. Watson-Gove is a painter, poet and small press publisher. He discovered the Expressionists in the 50's, Abstract Expressionism shortly thereafter, and he has never looked back. His major influences are Judy Chicago, Hans Hofmann, Richard Allen Morris and Jackson Pollock. Make a point of visiting this exhibit during its run at the Bay Club throughout much of March.

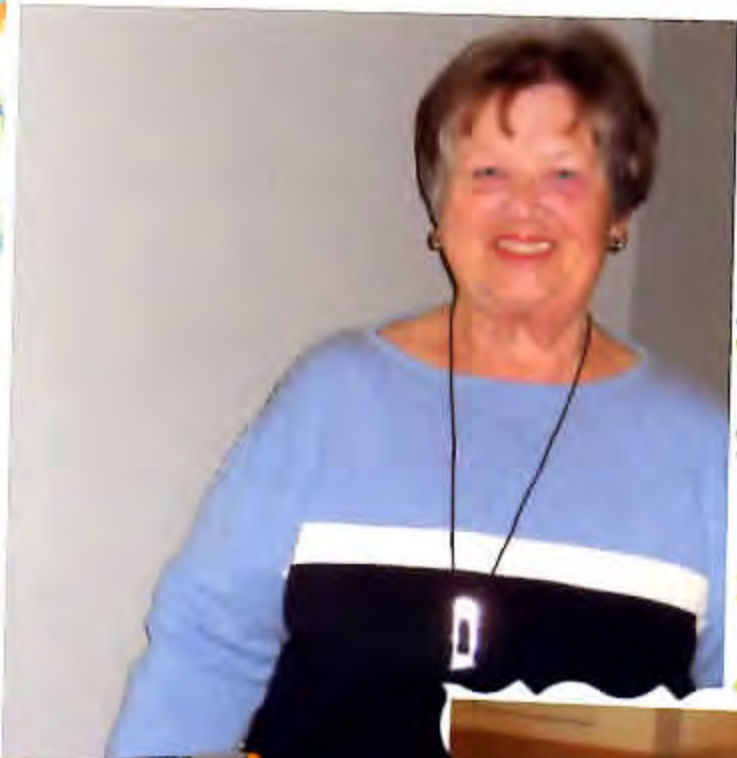
\*\*\*\*\*

### ARTISTS' LEAGUE EXHIBIT

Judy Thomas and Jim Watson-Gove, members of the Artists' League, are exhibiting her fused glass and his abstract paintings in the Hallway Gallery. Thomas began ceramic classes in Bellevue when her children were small, returned to the art in the early 90's. This led to glass and she now has been doing fused glass for about 15 years. Visits to art museums and galleries in the U.S. and Europe fueled her interests primarily in modern art and abstraction. Watson-Gove, painter, poet and small press publisher, discovered the Expressionists in the 50's. Drawn to Abstract Expressionism, his major influences are Judy Chicago, Hans Hofmann, Richard Allen Morris and Jackson Pollock. Be sure to visit this exhibit while it continues here at the Bay Club throughout this month.









## This Has to Be the Cream of Dream Jobs

by Steve French, guest writer



Roger Ponto demonstrating a new Shure Vocal Master Sound System to the 5th Dimension in 1970.

Submitted photo

"Move the mic closer to your lips when you need deeper bass, Frank. Eat it on the really low notes. Pull it away when you want softer higher tones. Don't breathe directly into the windscreen. The audience will hear it. And never point the mic at the monitors!"

That was Roger Ponto, now a retired sound systems expert, instructing Frank Sinatra on how to use a new Shure microphone after being asked how to improve his performances on stage. Roger gave similar tips to virtually every other entertainer whose name was splashed on glittery casino signs that lined the Las Vegas Strip. Poor Roger — in the 60s and 70s he had to work with the 5th Dimension, the Carpenters, The Association, Charlie Rich, Andy Williams, Wayne Newton, the Rat Pack, Paul Anka, Lou Rawls, Herb Alpert, Sergio Mendes (Brasil '66), Burt Bacharach, Lainie Kazan, Johnny Mathis, Loretta Lynn, and many others.

Why? Because Roger's employer, Shure Brothers Inc., the world's largest microphone manufacturer, said so. The company's mission: To make certain that Shure mics were the brand of choice in Las Vegas. Roger, as a key member of Shure marketing and sales and recognized as a leading audio engineering authority, was the perfect choice for the job (although he claims that he can't sing a note and lost his hearing from too many sound mixing jobs). The rest is history. See an entertainer on a Vegas stage today and odds are the mic in their hand is a Shure.

Roger's job didn't just focus on Las Vegas, however. Among many other projects, he set up the microphones for the infamous 1968 Democratic Convention in Chicago. The delegates were so impressed with the mics that many of them "disappeared" before the sessions

ended. Such enthusiastic souvenir-taking caused the speaker a bit of a problem since he had to scramble to locate a surviving mic so a motion to end the convention could be made.



Roger and Peggy Ponto today.

Submitted photo

Roger and his wife Peggy, who is a director on the South Bay Community Association Board, now live in peace and quiet in Teal Lake Village far from the raucous regaling of famous entertainers and politicians. I think he still misses it, so if you happen to see Roger around Port Ludlow, ask him about his experience with Ol' Blue Eyes, or working as a mixer, or the re-opening of the Arie Crown Theater in Chicago with Richard Carpenter. I promise that you'll never look at a microphone the same way after getting to know Roger Ponto.



Rosaletta Curry stars in a one-woman show called "The Unremarkable Death of Marilyn Monroe" showing March 31-April 3 at the Chameleon Theater in Port Townsend. Courtesy photo by Richard Alan Sloane

## Curry stars in 1-woman show March 31-April 3

By Vivian Kuehl Contributor Townsend.

In Rosaletta Curry's one-woman performance of "The Unremarkable Death of Marilyn Monroe," the audience is invited into Marilyn's bedroom for her final night, and her own final look at her life.

Curry found the script quite by chance in a London bookshop. She sat down and read it all the way through, drawn to Monroe's utter vulnerability and openness and humor and just blunt honesty in the play.

The play, written by Elton Townsend Jones, gives Marilyn, who "has become for us a sex-symbol, a confused and misunderstood starlet of the Hollywood system, a magnet for gossip and titillation, an icon of colossal proportions, a warning about the excesses of fame, and much more," a chance to tell her side of the story.

The American premiere is at 7:30 p.m., Thursday, March 31 and continues with evening performances April 1-3, with a 2:30 p.m. matinee on Sunday, April 3 at the Chameleon Theater, 800 W. Park Ave., Port

Tickets are \$15 or \$10 for students, available at the door or through [brownpapertickets.com](http://brownpapertickets.com).

"What's really interesting is it's a very surprising play. It surprised me when I first

read it and I think it will surprise the audience," said Curry.

"There are not that many solo plays written, and it's hard to find one you can relate to," said Curry. "It just draws you into this story, and it pinpoints things we can all connect to in her life, movies

we know, events we know her for, images, and things like that, but then it tells you the backstory of what was really happening behind those movies, behind those images, the famous iconic white skirt moment, the more difficult, more human reality of what went into creating this image.

"It's also such a relatable story that I think it's not a story about a sex goddess or a movie star or this Hollywood idol that we sort of think of her as, but just a real woman who had a lot of issues and a lot of struggles in her life that

"...it's this need to actually save herself, to be understood and to get through those difficult things in her past, and find a sense of freedom."

Rosaletta Curry  
actor



Rosaletta Curry stars in a one-woman show called "The Unremarkable Death of Marilyn Monroe" March 31-April 3 at the Chameleon Theater, 800 W. Park Ave., Port Townsend.

Photo by Vivian Kuehl

she had to overcome.

"I connected to that personally. I found myself really relating to this girl, this 'Noodle' as she calls herself, on the page, so strongly. I just was so emotionally involved with this character that I thought I have to do this," Curry said.

Luckily for Curry, 23, a recent graduate of Drama Centre London's year-long program, the rights for the play were available for the U.S., and a visit home to Jefferson County provided the opportunity to produce the play.

"Connecting with the vibrant local theater scene to do the project has been wonderful and a very warming

experience," said Curry. "That energy is there in London as well but it's a big industry and it's wonderful to come home and have these connections. It's such a vibrant place and people have such incredible skills."

Director Kerry Skalsky, a Cornish College of the Arts faculty member, worked with Curry as Regan in "King Lear."

"I like his style of direction, and he's a teacher, and an actor as well, so I'm lucky," said Curry. "One of the reasons I'm so excited to work with him is that we work very fluidly together. So we'll play off each other. I'll bring something,

he'll watch me work, then he'll get ideas from that, push me further. I'll try those things, he'll get other ideas - so it's sort of a back and forth. He often pushes me, helps structure, gives shape from an outside perspective, and really helps me pinpoint the specifics of the script. He's very good with language."

Katie Kowalski is handling stage management, and Noah Morningstar is on sound and lighting.

Gia Taylor is doing make-up design, and included in the show is a fabulous blonde wig from Michael Costain at Wig-Master Associates on Rhody

See MARILYN, Page 10 ▼





ARTS & ENTERTAINMENT FOR MARCH 23-29, 201

## **'The Unremarkable Death of Marilyn Monroe' plays at Chameleon Theater**





# life in ludlow

## Great performances

By Ned Luce

As you would expect, the Port Ludlow Artists League adds a unique layer to the community. The members display their various artistic pieces in their gallery next to Sound Community Bank as well as at the Beach Club and Bay Club. Much of it is available for sale, and other pieces are provided to add richness to the fabric of life here.

A recent conversation with Jeanne Joseph at the Yacht Club's Wreck Room provided additional insight into one of the league's best programs. The group provides at least one annual scholarship for promising students of the creative arts at Chimacum High School. The recipient in 2010, Rosaletta Curry, returned to the area last week to present the play "The Unremarkable Death of Marilyn Monroe" at the Chameleon Theater in Port Townsend. Jeanne was one of 11 Artists' League members who saw the opening-night production last week and was justifiably proud of the performance provided by Rosaletta. I also followed Jeanne's suggestion that I contact Ginny Ford, who is one of the key folks behind the scholarship program. Ginny told me all about Rosaletta's remarkable career here, at Ithaca College and in London. It is clear that the Artists' League is making lasting contributions to creative arts with these scholarships.





## Ludlow artists fete Poulsbo photographer

Poulsbo artist and Port Ludlow Artists' League member Jolly Sienda is the League's featured Artist of the Month for April.

Sienda's photographs, printed on metal as well as paper, will hang this month in the lobby of Sound Community Bank, at Oak Bay and Osprey Ridge roads, Port Ludlow.

Sienda discovered her passion for photojournalism in 2003 while living in Germany. She became a freelance writer and photographer for the *European Stars and Stripes* newspaper, writing travel and human interest stories and capturing photos of people and places in Europe.

She worked as an advertising representative for the *Washington Post* newspaper in Washington, District of Columbia, and as public relations and public affairs consultant for Department of Defense clients, moonlighting evenings and weekends as a photographer.

She now owns and operates Jolly Sienda Photography, [jollysiendaphotography.com](http://jollysiendaphotography.com), and is focusing on growing her wedding and portrait business.

Meet Sienda at the Second Wednesday Reception, 4-5 p.m., April 13 in the bank lobby and 4-6 p.m. in the gallery adjacent to the bank. For more information contact Judy Danberg at 360-473-7999 or by email at [shortline@cablespeed.com](mailto:shortline@cablespeed.com)

## That's a Jolly Shot!

No, the British haven't landed. It's an outstanding photography "shot" by Poulsbo artist and Port Ludlow Artists' League (PLAL) member, Jolly Sienda, the featured Artist of the Month. During the month of April, her photographs, printed on metal as well as paper, will hang in the lobby of Sound Community Bank on Oak Bay Road and Osprey Ridge, Port Ludlow.

Sienda discovered her passion for photojournalism in 2003 while living in Germany. She became a freelance writer and photographer for the *European Stars and Stripes* newspaper in Germany, writing travel and human interest stories and capturing unique photographs of the places she visited in Europe and of the people who captivated her.

Sienda developed her eye and honed her photography skills by practicing with her cameras and lens on location and in studio settings. She studied with other professional photographers to learn about camera equipment, both natural and studio lighting, and the business of photography. She affiliated herself with other working photographers and was often times a second shooter for them at weddings, events, and portrait sessions. Sienda was fortunate to have consulted with a retired editor and photographer of the *National Geographic*, whose invaluable guidance helped her to develop her skills as well as her present website portfolio.

With a bachelor's degree in liberal arts, her education and sales background set her up for success as an advertising representative for *The Washington Post* in Washington, DC, and later, a 10-year stint as public relations and public affairs consultant for U.S. Department of Defense (DoD) clients in Washington, DC and Europe. During this time, she honed her skills by moonlighting evenings and weekends as a photographer.

After 30 years of living abroad and on the East Coast, Sienda moved back home to Washington State, residing with her

family on the Kitsap Peninsula. She owns and operates Jolly Sienda Photography, [jollysiendaphotography.com](http://jollysiendaphotography.com), and is focusing on growing her wedding and portrait business. Her future plans are to open a professional photography studio with an eye to eventually arranging group location trips for photography enthusiasts.

All are invited to the reception on **Wednesday, April 13** for a salute to artist and photographer Jolly Sienda. The bank lobby will be open from 4:00 to 5:00 p.m. to meet Sienda and view her photographs while the gallery, adjacent to the bank, continues the celebration from 4:00 to 6:00 p.m. Please join PLAL with a glass of wine and light hors d'oeuvres and meet other league artists and friends. More information can be obtained by contacting PLA President Judy Danberg at 360-473-7999 or by email at [shortline@cablespeed.com](mailto:shortline@cablespeed.com).













## Arts and Entertainment

*This section features news on Port Ludlow arts and entertainment events, as well as a performing arts calendar for Jefferson, Clallam and Kitsap Counties. Submit news and calendar items to Beverly Rothenborg, editor, at [bevrothenborg@broadstripe.net](mailto:bevrothenborg@broadstripe.net) by the 10th of the preceding month.*

### Tenor Ken Lavigne Presents "The Road to Carnegie Hall"

by Barbara Wagner-Jauregg, Guest Reporter



*Ken Lavigne dreamed of singing at Carnegie Hall and made it happen!*  
Provided photo

Singer Ken Lavigne woke up on New Year's Day 2008 and decided he wanted to follow his dream of performing at the prestigious Carnegie Hall. And, 12 months later, on January 22, he made his New York debut, accompanied by the New York Pops Orchestra.

Port Ludlow Performing Arts (PLPA) presents its season finale on **Saturday, April 16,**

starring Ken Lavigne, a singer, composer, communicator, and consummate entertainer, as he takes his audience on a riveting and enchanting journey. Told with spectacular songs and entertaining and hilarious stories to the accompaniment of a four-piece ensemble, Lavigne embodies the spirit of the underdog – audacity, tenacity, and ultimately... triumph.

Bay Club doors open at 6:15 p.m. only for subscribers, benefactors, and the evening's volunteers to preselect seats: general admission ticket holders will be welcome at 6:30 p.m. The concert begins at 7:30 p.m.

Singer Ken Lavigne has charmed his way into the hearts of concertgoers across North America with his exciting blend of classical tenor sound and modern style. He was recognized early for the outstanding timbre of his lyric tenor voice as well as the ease and agility with which he sings. No stranger to Port Ludlow audiences, he was a

founding member of The Canadian Tenors. In 2006 he co-founded the successful tenor trio ROMANZA that appeared here in December of 2009. The ensemble toured throughout Canada and the United States presenting hundreds of concerts.

Performing at Carnegie Hall was a dream come true for Lavigne. After having received three standing ovations for his performance in New York, the debut led to further engagements across North America, including exclusive engagements with famed Los Angeles producer and multi-Grammy winner David Foster. The Vancouver Island resident was honored to perform for His Royal Highness Prince Charles. All the while he continues to earn accolades for his impressive list of solo concerts and engagements presenting popular songs and traditional tenor arias with symphonies and orchestras internationally. Audience favorites on his song list include: "O sole mio," "Funiculi Funicula," "Nessun Dorma," "Be My Love," "Loch Lomond," "Danny Boy," "Hallelujah," "Bring Him Home," "Because We Believe," and more.

Underwriters for Lavigne's performance are Garth and Mary Lindsey, Steve Shanklin and Sherry Robinson, with additional sponsorship by Waste Connections.

Port Ludlow Artists' League member Gail Larson will be the exhibiting artist. She is currently working in acrylics, mixed media, and collage. Larson's work has been accepted in local and national exhibits. She has participated in both group and invitational exhibits and received many awards for water media and collage. In 1996 she received Signature Membership in the National Collage Society. Be sure to visit this exhibit during its run at the Bay Club.

Tickets are available at the Bay Club and can be purchased on the website [PortLudlowPerformingArts.com](http://PortLudlowPerformingArts.com). Subscribers are reminded that if you will be away and unable to attend this outstanding performance, gift your ticket to someone or notify Diane Purdy, [gpurdy@cablespeed.com](mailto:gpurdy@cablespeed.com), so waitlisted people can be accommodated. Subscribers donating tickets to PLPA for resale are sent a letter for their tax records.





## Terry Grasteit Speaks on the Creative Process and Abstract Art

Is abstract art just random splashes of paint on a canvas or does abstract art hold insights and ideas for every artist? On Wednesday, April 20, Terry Grasteit, accomplished artist, inspiring teacher, and engaging presenter, will answer this question and more at the Port Ludlow Artists' League (PLAL) general membership meeting. Grasteit will demystify abstract art and share insights on how concepts of abstract art and creativity can inspire artists of all ages.

Grasteit teaches abstract art and coaches creativity and visual awareness to artists and others who wish to expand their current artistic boundaries. He describes himself as an abstract experimental artist and likens his painting process and imagery to an endless journey of discovery and expression.

An accomplished painter, Grasteit's work has been exhibited in galleries and juried shows throughout Washington State and in Los Angeles, San Francisco, and Copenhagen. He is a member of Blue Whole Gallery and maintains a studio in a pastoral setting near Sequim, WA.

Grasteit has degrees in art and cognitive psychology from University of California, Santa Cruz, and post graduate work at UCLA in painting.

The PLAL general meeting will be held at the Bay Club at 1:00 p.m. Guests are welcome to attend this monthly meeting and social time. A guest fee of \$5 may be paid for an individual meeting or dues of \$30 will provide a year of inspiring programs for both art lovers and artists of all levels. For more information, contact Patricia Webber, PLAL Program chair, at [2pw@gmx.com](mailto:2pw@gmx.com).

### Artists' League hears about creative process April 20

Is abstract art just random splashes of paint on a canvas, or does it hold insights and ideas?

At the April 20 general meeting of the Port Ludlow Artists' League, Terry Grasteit answers this question and others.

Grasteit's paintings have been exhibited in galleries and juried shows throughout Washington state and in Los Angeles, San Francisco and Copenhagen. He has

degrees in art and cognitive psychology from University of California, Santa Cruz, and has done postgraduate work in painting at UCLA.

He teaches abstract art and coaches creativity and visual awareness,

describing himself as an abstract experimental artist and likening his own painting process to an endless journey of discovery and expression.

The meeting takes place at the Port Ludlow Bay

Club at 1 p.m., Wednesday, April 20.

Guests are welcome with a fee of \$5. Annual dues are \$30. For more information, contact Patricia Webber at [2pw@gmx.com](mailto:2pw@gmx.com).



Tue, Apr 5, 2016 at 10:56 AM

randstar119@earthlink.net <randstar119@earthlink.net>  
To: heartfirestudio@gmail.com

Good morning -

Info for the art league -

Well, I made the cut for the City's new City Hall Exhibit Area - Glad to see that I had, Sallie and I went over yesterday to see the hanging and I am happy to say they did a good job -

Sallie is all packed for our trip to the Czech Republic (has been for two weeks) and I am thinking about it - I still have time, we leave on Sunday -

Not only do we want to see the Mucha posters in his museum, but we have been reading about his Slav. Epic in travel books and Sallie found good info from Wikipedia - Seems this exhibit in another museum and will only be displayed through 2016 due to much fighting about the ownership of the 20 canvases - Look it up, quite interesting reading -

take care -- randy

City of Sequim - Exhibit - Apr., May, June 2016.jpg

St.;  
161 W.  
eather  
nington  
der, 120  
Purple  
7 W.  
isting  
shington  
ique +,  
St.;  
ke, 171  
and  
143 W.

Washington St.

■ **The Sequim Civic Center**, 152 W. Cedar St., hosts Black and White Art Exhibit in the lobby from 5 p.m. to 7 p.m.

The City Arts Advisory Commission reviewed 58 pieces of work from 27 artists before selecting 22 pieces from 19 artists to be included in the show.

The exhibit will include work in photography, carved porcelain, block print, wood engraving, watercolor painting, paper mache, charcoal and mixed media.

The artists represented are Greywolf Photography, Randy Radock, Linda Collins Chapman, Robert Amaral, Kim McBride, Lony Huff, Elanie Salazar, Valerie Henschel, S. Gansert Shaw, Henning Erben, Gina Cox, Kaitlyn Walter and Doug Parent.

The exhibit will be on display until June 30.

Regular business hours for the Civic Center are Monday through Friday from 8 a.m. to 4:30 p.m.



TURN TO ART/11



## PLAL to showcase encaustic artists

Encaustic printmakers Mary Lynn Laker and Victoria Foster Harrison share the spotlight as Port Ludlow Artists' League's Artists of the Month.

A Second Wednesday reception honoring the two takes place on Wednesday, May 11. The gallery, at 9500-B Oak Bay Road, is open 4-6 p.m., while the bank lobby next door, also features artwork, is open 4-5 p.m. The community is invited to join the league, enjoy a glass of wine and light hors d'oeuvres, and meet other league artists and friends.

Harrison, first a large-scale contemporary landscape watercolorist, was introduced to encaustic, the art of combining beeswax with coloring agents, in 2010, and again in 2012, when an encaustic print-making course in New Mexico captured both her interest and her heart. For Harrison, the whole process "is both a contemplative exploration as well as a fast-paced process."

Laker has always been interested in design, applying her love of color to the various mediums of fabric, photography, paper, wax, metals, glass and jewelry. The art of encaustic recently has drawn her attention, and a class with Harrison encouraged Laker to try the technique. "It's easy to lose myself in the colors as the wax heats and shapes take form," said Laker.

For more information, contact Judy Danberg, league president, at 473-7999 or [shortline@cablespeed.com](mailto:shortline@cablespeed.com).

## Victoria Foster Harrison Artist

[www.VictoriaFosterHarrison.com](http://www.VictoriaFosterHarrison.com)

[artist@VictoriaFosterHarrison.com](mailto:artist@VictoriaFosterHarrison.com)  
fb: Victoria Foster Harrison Encaustic Prints  
t: @ArtistVHarrison

206.779.0154  
Port Ludlow, WA 98365

# VICTORIA FOSTER HARRISON

## Encaustic Prints

Original one-of-a-kind artwork  
created with pigmented beeswax  
and Japanese paper

"Admiring your artwork is like  
seeing shapes in the clouds."

— Quoted from a collector.

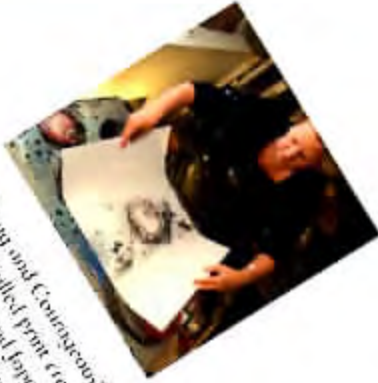
## "Create Freely Workshops"

[www.VictoriaFosterHarrison.com](http://www.VictoriaFosterHarrison.com)

[artist@VictoriaFosterHarrison.com](mailto:artist@VictoriaFosterHarrison.com)

FB: Create Freely Workshops  
Port Ludlow, WA





*"Strong and Courageous"  
Original hand-pulled print created with  
pigmented beeswax and Japanese paper.  
[www.VictoriaEsterHansen.com](http://www.VictoriaEsterHansen.com)*





## It's a Twofer!

We all love the old "two for the price of one" and that's what's happening during May with Port Ludlow Artists' League's Artists of the Month. Mary Lynn Laker and Victoria Foster Harrison are sharing the spotlight in the lobby of Sound Community Bank. Their work will be on display during the month of May, and you can meet them at the Second Wednesday Reception on **May 11**. Both artists are multi-talented in several different mediums but this show will feature their encaustic print-making with each sharing their own visions in abstract.

Encaustic printmaking involves touching chunks of pigmented beeswax to a warmed aluminum palette, then manipulating the melted wax with a variety of strokes and tools. Rice paper is then smoothed on top of the palette and peeled away forming the picture in reverse. Since rice paper is translucent, either side can be the final picture. For each of these artists, there is no "right or wrong," as the picture takes shape. Starting with a particular intent, the wax often takes a different direction and the end-product is something that was never imagined but beautiful and contemplative in its own right. Wrinkles, spots and blobs are welcomed elements to the final picture, giving it a depth that a perfectly flat application of wax can never do.

Harrison, first a watercolorist doing large scale contemporary landscapes, was introduced to encaustics in 2010. Two years later, a course in New Mexico in encaustic print-making grabbed both her interest and her heart, and she's never looked back! Harrison surrounds herself in color, making most of her own wax "cakes" in hues that often-times start as one color but change as she tries different combinations of pigments. At the end of her artistic endeavor, she scrapes the un-transferred wax from the aluminum warming plate and heats it into blocks of new colors to be used on some future vision.

Laker has always been interested in design, applying her curiosity and love of color to the various mediums of fabric, photography, clay, collage, metals, sumi-e and jewelry. The art of combining beeswax with coloring agents (encaustic) has captured her attention as of late



"The Student, Artist Mary Lynn Laker.

Submitted photo





Continued from previous page

A class with Victoria Harrison encouraged her to try her hand at encaustic print-making and now, there's no stopping her! Abstract art is as much about the process as it is about the form and vision. "It's easy to lose myself in the colors as the wax heats and shapes take form," says Laker.

The bank lobby will be open from 4:00 – 5:00 p.m. while the Gallery, adjacent to the bank, continues the Second Wednesday Reception from 4:00 – 6:00 p.m. Please join the League with a glass of wine and light hors d'oeuvres and meet other League artists and friends. More information can be obtained by contacting League President, Judy Danberg at 360-473-7999 or by email at [shortline@cablespeed.com](mailto:shortline@cablespeed.com).







## Not Your Standard Motel Art!

by Judy Danberg, Guest Writer

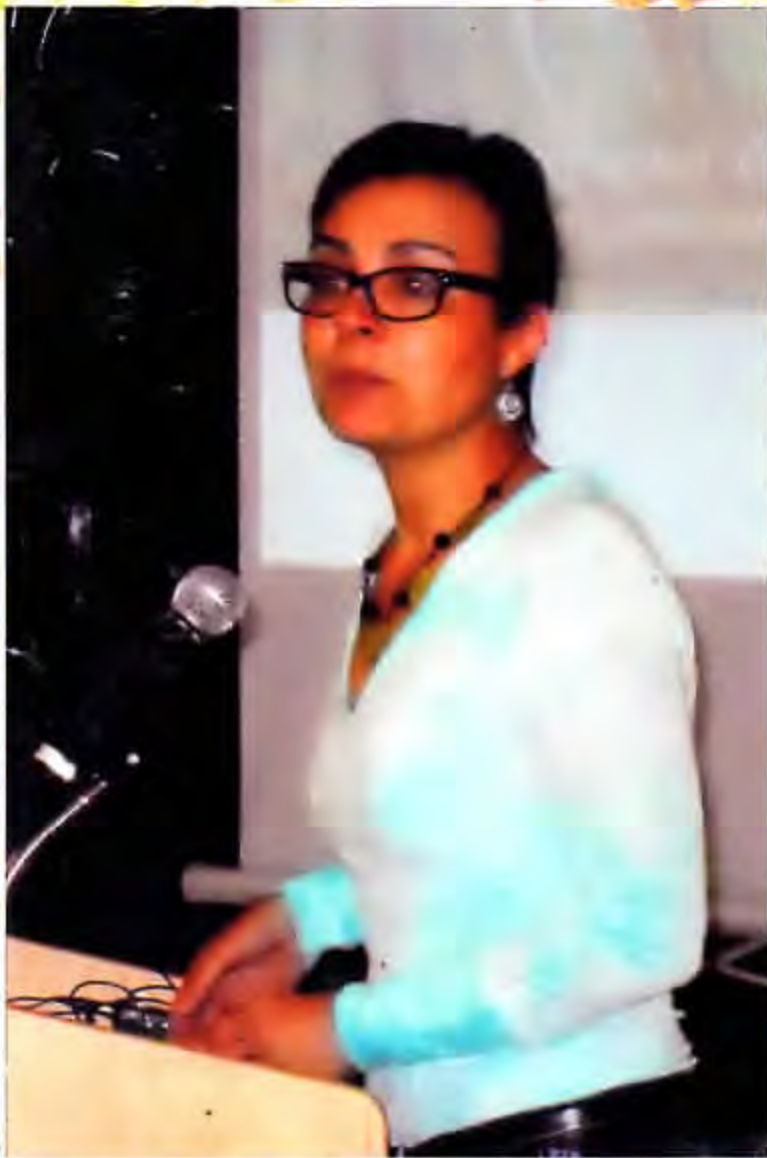
We all know the ones; pictures of generic hills or fields or mountains, printed by the hundreds with frames screwed to the wall over the bed so that no one steals them. Not that anyone is so desperate for something to hang on their own walls that they'd take those!

Keeping that in mind, take a good look at our local merchants' walls the next time you visit any of the seven Port Ludlow businesses who partner with the Port Ludlow Artists' League to display *real artwork*, done by *real artists* in our own neighborhood. Those adorned walls are changed every three months to give merchants and their clients refreshing and amazing art pieces that just beg to be admired. The line-up through June features art by:

Cathy Thomas' water colors at Active Life Physical Therapy; Gail Larson's acrylics and collages at the Bay Club's Gallery Hallway in April and May, with Marilyn Sandeau in June; Ann Arscott's water colors, pastels, and sumi-e at the Beach Club Gallery; Barbara Adams' pen and water colors at Coldwell Banker Real Estate and also at Mats Mats Chiropractic Office; Gary Griswold's water colors at the Olympic Peninsula Gateway Visitor Center, and a varied selection of the League's artists at The Inn At Port Ludlow with the theme "Spring Showers Bring May Flowers."

Each time these Merchant Exhibits change, artists get to share their talent with an audience that changes too. The walls of lobbies, waiting rooms and offices around Port Ludlow are warmer, more interesting and make a visit an adventure because of that artwork. The next time you visit these merchants, take a few minutes to immerse yourself in the artwork that truly is original. It will be scenes that are fresh, uplifting and inspiring, and never stale. Guaranteed!





## Find Your Creative Wellspring at Artists' League Meeting

Bainbridge Island-based artist and designer Alex Sanso believes everyone has a creative spirit, not just those of us who actually create art for a living or as a hobby. We're *all* creative—we just tend to forget that as we grow up. She will share her thoughts on **Wednesday, May 18** at 1:00 p.m. at the Bay Club for the League's general meeting.

Alex has been creating for as long as she can remember—drawing, writing, painting, and even performing on stage with an improv group. A designer for over three decades, Alex now has her own business, Alex Sanso Creative, with major clients including Disney, Hallmark, and Cedar Fair Entertainment. Recently, she joined forces with the Dave Carson Quartet for “Jazz Canvas” performances. Alex creates an interpretive painting based on the music. Her art is then raffled and the proceeds are donated to a designated charity.

Alex will describe how everyone—creative types and those who think they don't have a creative bone in their body—can reconnect with their inner creative spirit and let it out to play, fearlessly and joyfully. She'll offer practical tips and exercises, and wrap up her presentation with a guided creative project in which everyone can participate, with materials provided. Learn how to see things with a fresh eye, get yourself out of a creative rut, and try something new during this presentation.

Guests are welcome to attend this monthly meeting and social time. A guest fee of \$5 may be paid for an individual meeting or dues of \$30 will provide a year of inspiring programs for both art lovers and artists of all levels. For more information, contact Patricia Webber, PLAL program chair at [2pw@gmx.com](mailto:2pw@gmx.com).





Artist of the Month

**June**

## Port Ludlow's "Modern Male Artists of Great Renown!"

"Renown (ri-noun) n. 1. The quality of being widely honored and acclaimed; celebrity." So says the American Heritage Dictionary, and so will those who view the Artists of the Month offerings in the lobby of Sound Community Bank during June. This group show focuses on some of the male artists of the Port Ludlow Artists' League who cover a wide range of mediums, technique, and vision whether they are new to the League or long-standing members. The all make contributions to the arts that should be enjoyed and celebrated.

**Alan Ahtow, photographer:** His photography gives the viewer an appreciation for the natural wonder and aesthetics of our lives with a renewed perspective of the everyday things that surround us. He especially enjoys discovering in natural surroundings, the vast array of artistic structures that people often make using found objects and which nature molds, shapes and finally, reclaims.

**Walt Biondi, jeweler, author, painter:** Primarily known for his beautiful silver jewelry, Biondi is now adding another dimension to his creative soul – that of author. With two books to his name in just the last couple of years, he returns in-between chapters to his first love of silver and gems, all of which he mines, cuts and sets.

**Larry Davidson, digital photograph manipulation:** The computer screen is his canvas, using the mouse as his brush. Each of his works of art requires hours of painstaking attention to detail, some taking 80 hours or more. His subjects are found in nature and focuses on them in such a way as to make them "fly" out of the frame.

**Gary Griswold, painter:** His recurring themes of seas and forests bring a sense of calm and peace to the viewer, taking us into the natural beauty of our Pacific Northwest. Recently added to his collection are scenes from his travels to Italy – a mini vacation for the viewer's delight,

**Rick McKenzie, photographer:** With a degree in Forestry, he managed commercial landscaping which in turn, shaped his view of natural surroundings and led him to photograph nature's own architecture. His love of the



*Totem Pole by Alan Ahtow*





outdoors and photography in landscape, nature and wildlife has evolved into a passion that h viewers.

**James Murphy, painter:** With oils as his medium, he chooses to not rely on literal concepts but instead paints from the heart using intuition and emotion. His paintings depict scenes that exist nowhere on earth yet seem familiar enough to people that they feel as though they have been to that very spot.

**Randy Radock, block printer, painter:** Known for his block prints inspired from nature, Native American art forms and travels to exotic places, each of his pieces is unique, individually hand inked with each print signed and numbered, part of a limited edition, never reproduced or computer-generated. He prints on various materials, including tapa cloth, slate, papyrus, and handmade papers making each piece unique - there is never a "repeat performance."

**Gary Settle, photographer, painter:** A 45-year career in photojournalism has given him a keen eye as to focus, timing and expression. A host of celebrities formed many of his earlier photographs but now his scenes of life in the Northwest as well as his recent travels, dominate his viewfinder, much to our delight.

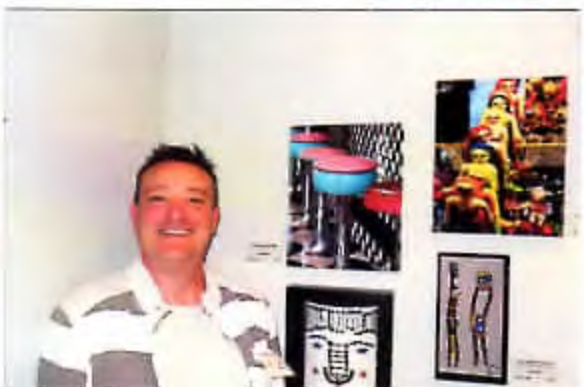
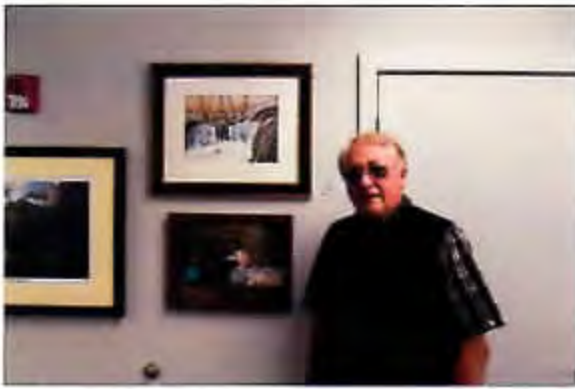
**Ken Thomas, fused glass, sculptor:** A devotee of modern art, his fused glass masks, fish and "ladder" people are both whimsical and colorful, giving a vibrancy and joy to each piece. Metal sculptures are a new focus for him and his "yard art" turns gardens into bright spots of color even on the gray days of the Pacific Northwest.

**Jim Watson-Gove, painter:** Strong colors are in his paintbrush making his art-pieces both bold and compelling. Abstract in style, there are many images within each painting giving the viewer a sense of purpose to sort them out, each different depending on the experience and minds' eye of those who take the time to study these works of art.

**Clint Webb, painter:** Watercolors are his medium and his paintings evoke a sense of calmness and quiet beauty. Landscapes are often the focus of his works, especially scenes from his many travels in Europe. From his travel photos, he is takes pleasure in putting brush to paper while he creates a "painterly" vision for the viewer to enjoy.

Join the Artists' League and friends in celebrating these fine artists at the **Second Wednesday Reception on June 8<sup>th</sup>**. The bank lobby will be open from 4:00 - 5:00 p.m. to meet them and view their masterpieces while the Gallery, adjacent to the bank, carries on the celebration from 4:00 - 6:00 p.m. Light bites will be on the table while the beauty of artwork and good conversation permeates the gathering.







## Artists' League Displays Works of Local Male Artists



Sol duc 2013, artist Rick McKenzie.

Submitted photo

“Renown” (ri-noun) is “the quality of being widely honored and acclaimed; celebrity” according to the *American Heritage Dictionary*. The Artists of the Month for June fit that description. The group show in the lobby of Sound Bank focuses on some of the male artists of the Port Ludlow Artists’ League (PLPA) who employ a wide range of mediums and techniques to create their unique visions.

# life in ludlow

## More traffic and more

By Ned Luce

A nice outing to Seattle’s Chihuly Garden and Glass exhibition turned into another traffic event.

Last week, it was the Hood Canal. This week, it was the Bainbridge ferry and Seattle’s electrical failure.

BJ, Fran Bodman, Sharon Draper and Elizabeth Vanzonnefeld took Joanne Racki to Seattle Center for lunch and a tour of Chihuly’s works. While there, the power went out down by the ferry terminal, and the Bainbridge Island run was disrupted for more than an hour. They arrived at the terminal expecting to walk on the 2:05 p.m. ferry and instead were able to leave at 3:15 p.m.

Well, apparently some of the downtown offices closed early for the day (something about elevators?), and the workers leaving added to the delay. Thus, when the five women got off the ferry on Bainbridge and then made their way to the parked car, they were at the tail end of a 60-minute ride from the ferry terminal to the Clearwater Casino, a normal 20-minute ride.

Those who know the territory will also know about the number of public restrooms on that route.

OK, same message as last week – stay home, the road system around here is not your friend. As Dan Bellack told us, “Life is too short for traffic.”

Fran and her faux comedian partner, Steven Gross, again coordinated a fun North Bay Potluck. The theme was Western, so I did my annual wearing of cowboy boots



and have been dealing with a blister on my toe ever since. Barry Burnett and friend again provided music for us. Did you know he is a fourth-grade teacher in Port

Angeles?

There were four new residents of Port Ludlow in attendance, more proof that the real estate market is heating up. We sat with Chris O’Higgins and his wife, Joanne, who had been in town about 10 days. He is the new director of facilities for Jefferson Health-care, so we should see a lot of him at the new clinic under construction in town. I introduced him to Larry Nobles, who claims he has been working on getting a clinic here for 10 years.

Again, the sixth annual Port Ludlow Sock Hop is just a month away, so put it on your calendar: Saturday night, July 2 at 7 p.m. at the Beach Club. It will again be a party not to be missed. Tickets are \$20 in advance at the Beach Club and the Bay Club.

I mentioned last week that Tish and Tom Satre spend the summer in Alaska on their boat providing fishing and hunting tours. Tom took the boat from Port Ludlow to Alaska with help and companionship from Ramsey and Anne Burrell-Smith, and Buddy and Karen Hills. All reports are that it went very well, with great weather and scenery.

Love a curmudgeon and have a great week!

(Contact Port Ludlow resident Ned Luce at ned-[luce@sbcglobal.net](mailto:luce@sbcglobal.net).)





Seattle Children's Hospital

Dear Port Ludlow Artists' League

We all would like to thank you for your generosity to our Fund Raiser on May 25th. Your donation of Art & Jewelry helped us to reach our goal. We were able to send the Hospital a check for just over \$10,000.

So again, Thank you so much.

*The Port Ludlow Children's Hospital Guild*

Kathy Thompkins - President	Wendy Chesney	Darlene Mjoen
Terri Ross - Vice President	Elma Berry	Lisa Gatlin
Claudia Avicola - Secretary	Lynn Schwarz	Dion Watson
Gayle Atkins - Treasurer	Carole Porter	Pat Webb
	Sally Hirschman	





June 11, 2014  
Dear Jeanne

I sincerely thank you  
on behalf of all the  
Port Ludlow SCH members  
for soliciting art & jewelry  
& creating the beautiful  
baskets representing so  
many of your talented &  
gifted artists.

Please also thank  
the artists who contributed  
the print & painting.

An event raised  
over \$1000 & all  
proceeds will specifically  
benefit children living  
on our peninsula  
on such a long hard  
day. I organize the Artists' League's  
members who contributed  
to this worthy cause.  
Thank you - Wendy Chomay



## **PLAL's June meeting**

### ***Just in Time for Summer Travels–Journaling***

Whether your travels take you to exotic faraway lands or on day trips throughout our majestic Olympic Peninsula, travel journaling will enrich the experience, provide a personal reference from the trip, and create a treasure trove of ideas for future travels, artistic or literary pursuits, and personal enrichment.

"Why A Travel Journal?" is Sandra Smith-Poling's presentation to the Port Ludlow Artists' League June 15, 2016, program. She will suggest how to get started and to enjoy travel journaling, share insights on basic supplies and techniques, and show many examples of her superb work.



CLASSICPAINTINGS.NET

Sandra Smith-Poling is the consummate travel journalist. She is a retired United States Air Force Colonel, where she served most recently as the Medical Squadron Commander of the 446th Aeromedical Staging Squadron at McChord Air Force Base. As a Flight Surgeon, she deployed to many parts of the world, including New Zealand, Europe, and Antarctica. Each deployment plus her extensive personal travels offered new venues and experiences for travel journaling. She is an accomplished and award winning artist with over 34 years of painting experience. She strives to capture what the eye and the mind see and feel in a scene. Her watercolor, oil, and pen and ink art are in galleries and private collections throughout the world.

She makes her home in Port Townsend, WA, and serves as the Medical Program Director for the Emergency Medical Services (EMS) of Jefferson County, West Olympic Peninsula, and Navy Northwest of Washington State and she continues to be a masterful and prolific artist.

To see the diversity of her paintings from around the globe, and for more information on Sandra Smith-Poling's work and her fascinating life, visit her website [www.classicalpaintings.net](http://www.classicalpaintings.net).

The Port Ludlow Artists' League General Meeting will be held at the Bay Club on **Wednesday, June 15<sup>th</sup>**, at 1:00 p.m. Guests are welcome to attend this monthly meeting and social time. A guest fee of \$5 may be paid for an individual meeting or dues of \$30 will provide a year of inspiring programs for both art lovers and artists of all levels.





of her paintings from around the globe, and for more information on Sandra Smith-Poling's work and her fascinating life, visit her website [classicalpaintings.net](http://classicalpaintings.net).

The Port Ludlow Artists' League General Meeting will be held at the Bay Club at 1:00 p.m. Guests are welcome to attend this monthly meeting and social time. A guest fee of \$5 may be paid for an individual meeting or dues of \$30 will provide a year of inspiring programs for both art lovers and artists of all levels. For more information, contact Patricia Webber, PLAL program chair, at [2pw@gmx.com](mailto:2pw@gmx.com).

## Sandra Smith-Poling Presents Travel Journaling to Artists' League

Whether your travels take you to exotic faraway lands or on day trips throughout our majestic Olympic Peninsula, travel journaling will enrich the experience, provide a personal reference from the trip, and create a treasure trove of ideas for future travels, artistic or literary pursuits, and personal enrichment.

"Why A Travel Journal?" is Sandra Smith-Poling's presentation to the Port Ludlow Artists' League **Wednesday, June 15** program. She will suggest how to get started and to enjoy travel journaling, share insights on basic supplies and techniques, and show many examples of her superb work.

Sandra Smith-Poling is a retired United States Air Force Colonel, serving most recently as the Medical Squadron Commander of the 446th Aeromedical Staging Squadron at McChord Air Force Base. As a Flight Surgeon, she deployed to many parts of the world, including New Zealand, Europe, and Antarctica. The deployments and personal travels offered new venues and experiences for travel journaling.

Smith-Poling is also an accomplished and award-winning artist with over 34 years of painting experience. She strives to capture what the eye and the mind see and feel in a scene. Her watercolor, oil, and pen and ink art are in galleries and private collections throughout the world.

From her home in Port Townsend, she serves as the Medical Program Director for the Emergency Medical Services (EMS) of Jefferson County, West Olympic Peninsula, and Navy Northwest of Washington State while continuing to work as an artist. To see the diversity















This watercolor painting is by Gary Griswold, one of nine artists whose work is displayed at the Port Ludlow Artists' League Gallery's current show, "Modern Male Artists," at 9500-B Oak Bay Road. *Courtesy image*

## Port Ludlow Artists' League presents 'Modern Male Artists'

The Port Ludlow Artists' League presents "Modern Male Artists" this month, focusing on some of its male artists, who work in a range of mediums, techniques and vision.

Photographer Alan Ahtow gives viewers an appreciation for the natural wonder and aesthetics of our lives with a renewed perspective of the everyday things that surround us. Walt Biondi, jeweler, author and painter, is primarily known for his silver jewelry.

Larry Davidson uses the computer screen as a canvas and the mouse as a brush for his digital photograph manipulation. His works require hours of painstaking attention to detail, some pieces taking 80 hours or more.

Painter Gary Griswold's recurring themes of seas and forests bring a sense of calm and peace to the viewer.

Rick McKenzie, photographer, has a love of the outdoors and taking photos of landscape, nature

and wildlife, which has evolved into a passion that he shares with his viewers.

Gary Settle, photographer and painter, photographed celebrities in his earlier years. Now, scenes of life in the Northwest as well as his recent travels dominate his viewfinder.

Ken Thomas is a sculptor and creates fused glass masks, fish and "ladder" people both whimsical and colorful.

Painter Jim Watson-Gove uses strong colors in

his abstract art. Clint Webb paints watercolors that evoke a sense of calm and quiet beauty.

Join the Artists' League and friends in celebrating these artists at the Second Wednesday Reception, 4-6 p.m., July 13 at the Port Ludlow Artists' League Gallery, 9500-B Oak Bay Road, Port Ludlow.

For more information about the Artists' League, contact Judy Danberg at 360-473-7999 or by email at [shortline@cablespeed.com](mailto:shortline@cablespeed.com).





*Port Townsend Circa 1890, artist Walter Biondi.*

Submitted photo







Port Ludlow Artists' League

## GALLERY

[View this email in your browser](#)

1-3 pm July 20, 2016 Program  
Beach Club, 121 Marina View Dr, Port Ludlow, WA.

### Steve Abbott— “Watercolor: Bright and Bold to Stave Off The Grey and Cold”

Steve will showcase and demonstrate his techniques for bringing vibrant and rich color to watercolor art. He is a lifelong resident of the Puget Sound area and his artwork reflects his connection to the sea and landscapes. He is an accomplished artist and presenter with work in private collections throughout the world. He is represented in Washington by Main Street Gallery in Chelan, The Crazy Lady Gallery in Port Orchard, and Bluewater Artworks in Poulsbo.

We are thrilled to have Steve step in to replace our previously scheduled presenter, Theresa Stirling, who had an unexpected family priority but will be rescheduled to our November 16 meeting.







Through an international competition, Kathy Constantine has had two pieces selected for publication in "Incite 4: Relax, Renew, Restore," to be published by North Light Books in October 2016. Constantine exhibits the chosen pieces and other works at a solo show at Burien Arts Gallery this July. Above is "City of My Dreams." *Courtesy image*

Port Townsend & Jefferson County Leader

# 'Art is about creativity'

Constantine's mixed-media works chosen for international publication

**RYAN PARKS**  
THE LEADER

Marrowstone Island resident Kathy Constantine recently had two of her works selected for publication in "Incite 4: Relax, Renew, Restore," which is to be released in October.

"It's kind of a risk to put your work out," Constantine said. "It takes a lot of courage to put what comes out of your mind and your heart into the world."

However, she recognizes the benefits that come from doing so. "It's good for an artist's résumé," she said. "It's also helpful for establishing your credibility as an artist."

"Incite" is an art book dedicated to the best of mixed media. Artists from around the world can

submit their works with the possibility of being published.

"It's like an international competition," Constantine said. Some of her works were also published in the 2013 and 2015 editions of "Incite."

Constantine considers herself to be an experimental artist. She works with mixed media, which includes various mediums such as acrylics, pastels and stained glass. Constantine also uses other items such as fabrics and old newspapers in her projects.

She also creates art clocks, mixed-media kimonos, sculptures and digital collages.

"I like to play with the materials and see where it leads me," she said. "I just tend to follow ideas."

Her art typically depicts

figurative birds, animals or human figures. Some of her works are also inspired by places she has traveled to, such as Spain and Hawaii.

She identifies her mother

*"I think of it as creativity more than art, in a way."*

**Kathy Constantine**  
VISUAL ARTIST

as a source for her interest in art. Constantine started an art club at age 10, but didn't take up the practice full-time until she retired from working with an ad agency about five years ago.

Now, Constantine prac-

tices art almost daily, creating pieces inside a workshop her husband built. After its construction, she once stayed inside for eight hours straight while working on a new project.

"I've always had to have a creative outlet," she said. "I think of it as creativity more than art, in a way."

Her works have also been featured in local galleries, such as Gallery 9 and Northwind Arts Center in Port Townsend, and Bainbridge Arts and Crafts on Bainbridge Island.

Constantine also teaches mixed-media classes to small groups of students in the Port Townsend area.

At the end of the day, Constantine just "wants to have fun." To browse Constantine's works, visit [kathyconstantine.com](http://kathyconstantine.com).



# Ludlow Artists' League shares creativity, energy

JACQUELINE ALLISON  
THE LEADER

The Port Ludlow Artists' League offers support and exposure to anyone passionate about art.

Made up largely of Port Ludlow's retired community, the league welcomes professionals, newcomers and people returning to art after many years. Members have the opportunity to showcase their work at two Port Ludlow galleries for two-month rotations and to attend monthly

meetings featuring a demonstration by a local professional artist.

The league operates as a cooperative; members volunteer to sit the gallery while their art is on display. The Port Ludlow Artists' League gallery, next door to Sound Community Bank, is open from noon to 4 p.m., from Tuesday through Saturday, and an additional gallery is located at the Inn at Port Ludlow. An "Artist of the Month" has his or her work displayed in the bank lobby.

*"There's a kind of energy that you get from people of like minds."*

**Judy Danberg**  
PRESIDENT

PORT LUDLOW ARTISTS' LEAGUE

Regular meetings take place on the third Wednesday of every month, and guests are welcome

likes to learn about an artist's process even if she doesn't practice that medium. As she has gotten older, art has helped her find time for herself and get outside her "box," she said.

"There's a kind of energy that you get from people of like minds," Danberg said of the league.

Billy Fang, who attended the meeting as a guest, looks forward to improving his artistry after a career in computer con-

See LUDLOW, page 3▼

See photos  
Learn more on [ptleader.com](http://ptleader.com)

to attend. Meetings are held from January to June at the Port Ludlow Bay Club, and July-December at the Port Ludlow Beach Club.

Northwest watercolor artist Steve Abbott gave a watercolor demonstration at the July 20 meeting.

Judy Danberg, league president and a quilter and jeweler,

Aug. 17 at the home and studio of artist Leilani Wilds, and includes a picnic lunch and sketching time in Wilds' gardens. An RSVP is required for this meeting.

Members also have access to art classes throughout the year and the opportunity to sell work at the Port Ludlow Festival by the Bay. (The festival has been canceled for 2016.)

League membership is \$30 a year, or \$15 after Aug. 1 through the end of the calendar year.

## Ludlow: Arts demos year-round

▼ Continued from page 1

sulting, he said. He went to art school in Hong Kong while growing up and now works in pencil, charcoal and watercolor.

"If I come here and pick up a new skill, it's worth my afternoon," he said.

All members, who range from painters, woodworkers, glass artists, basket weavers, photographers and other artists, participate in a creative "challenge" in which they have one year to make a piece in-

### Wanda Mawhinney featured

Experimental painter Wanda Mawhinney is the Port Ludlow Artists' League's featured artist for August. A reception honoring Mawhinney and her show, "A Glimpse into the Abstract," takes place on Wednesday, Aug. 10.

The gallery, at 9500-B Oak Bay Road, is open 4-6 p.m., while the bank lobby next door, also featuring artwork, is open 4-5 p.m. The community is invited to join the league, enjoy a glass of wine and light hors d'oeuvres, and meet other league artists and friends.

spired by a theme. A public presentation of this year's "sueing music" creations is scheduled for Oct. 19 at the Beach Club; the winning piece is to be displayed at Sound Community Bank in November.

The next meeting is scheduled for Wednesday,



## Contemporary Abstract Expressions by Wanda Mawhinney

Working with abstracts always creates an element of excitement and surprise. My love of color and texture allows me to create bold lines and compositions. This is why I consider my art contemporary abstract expressions. I'm an experimental painter; every new canvas is an intuitive adventure. I have no preconceived ideas when I begin. I choose colors, then intuitively allow the painting to evolve, building layers and letting them create their own energy. Having switched from acrylics to oils a few years ago, I love the buttery feel of oils and how they softly blend and flow. Over the years I've been inspired by the independent spirit and vision of modern abstract artists such as Helen Frankenthaler, Richard Diebenkorn and Joan Mitchell, and have been blessed with supportive teachers like Cynthia Miller at the University of Arizona and my mentor, Sue Nosler Gray. After 45 years in the desert Southwest, my palette mostly features bright reds, oranges and yellows. However, various greens and grays of the Northwest are beginning to creep into my work. Robert Burridge says, "A painting is never finished, it just stops in interesting places." Those interesting stopping places are what keeps me painting, and I'm often surprised and delighted at the final results.



Wanda Mawhinney  
Contemporary Abstract  
Expressions

Below are a few examples of contemporary abstract expressions by Wanda Mawhinney. You can contact Wanda by phone 360-437-9081 or by email at [Mawhinn...@msn.com](mailto:Mawhinn...@msn.com)



Vessel 1



Completeness



Intrigue



Isla Dorado



Entering Avalon

Born and raised in southern Idaho, I lived 10 years in Las Vegas and 35 years in Tucson before moving to Port Ludlow in 2005. I began as an elementary school teacher, then spent 20 years teaching yoga and running my own neuromuscular therapy business. I've had two one-woman shows and appeared in numerous juried shows, receiving a Merit Award, a Second Place and two Best of Shows. While in Arizona, my work appeared in Sedona at the Art Center and Arte-Misia Gallery. I was a member of Port Townsend Gallery for seven years. I managed the Port Ludlow Artist's League Gallery for



## Wednesday Picnic at the Wilds'

1 message

**shortline@cablespeed.com** <shortline@cablespeed.com>

Tue, Aug 16, 2016 at 12:51 PM

To: Marti Mathis <martimathis@wavecable.com>, Terilyn Krueger <tmkrueger@q.com>, Eleanor Joan Watson-Gove <heartfirestudio@gmail.com>, Virginia Moyer <ginmoy@msn.com>, Mary Lynn Laker <mllaker@gmail.com>, "Campo, Diane" <Dianecampo1@gmail.com>, carol Durbin <gramcrc@gmail.com>, Ann Radwick <annradwick@cablespeed.com>

Hello League Artists!

Just a reminder that this Wednesday the 17th is the League picnic at Leilani Wilds' home, studios and gardens from 12:00 to 3:00-ish.

The idea of the sack lunch exchange has met with some resistance due to diet restrictions so we will not be sharing lunches – each person keeps the lunch they came with. However, some of you have already decorated your sack, so, in keeping with the challenge, there will be little awards for “sack most befitting its contents,” “funniest sack,” and “best sack for out-of-doors!”

Dessert and drinks, iced tea and lemonade, will be provided.

Parking is limited so please plan on carpooling – we will be meeting in the parking lot at the Beach Club at 11:30. The parking will be on the lower level next to the house so getting around is simplified.

See you there! Judy D.



## Victoria Harrison on Art Port Townsend Studio Tour

Port Ludlow resident, Victoria Foster Harrison, will be exhibiting and demonstrating her encaustic printmaking during the Art Port Townsend Studio Tour this summer, **August 27 th and 28 th (Sat and Sun), 10 -4**. Visit her studio at 263 Greenview Lane and watch her demonstrate this unique and contemporary printmaking process. Using tgsxsxsxsxspigmented beeswax on a warmed professional palette, she creates original one-of- a-kind prints with sumi-e paper. She not only mats and frames her prints, but also creates beeswax panels with her prints – sometimes in combination with rusted imprints or hand-dyed silk.

For further information, see

<http://artporttownsend.org/2016/studio-tour-artists/victoria-foster-harrison/>

[Click this link to display a poster you can share.](#)

### **More Events:**

Victoria also has her panel work on display at the Port Townsend Public Library's "Art in the Library" event, now through October 21st, 2016.

<http://northwindarts.org/news/art-in-the-library/>

Workshops available – next one up is August 19th and 20th.

[www.VictoriaFosterHarrison.com](http://www.VictoriaFosterHarrison.com)



# GOOD GOURD!

## Ludlow artist gives new life to gourds

JACQUELINE ALLISON  
THE LEADER

**G**ourd art can be more than a bowl or box. Terilyn Krueger, a gourd artist, or "gourder," uses unusual embellishments and tools to create whimsical pieces.

"There's just so many options, it's not like a 2-D painting," the Port Ludlow artist said. "It's such a fun medium to work with and it's hard to put down."

Krueger, 59, carves, paints and decorates gourds to create diverse objects, including masks, drums, pitchers, purses, bird feeders, urns, jewelry hangers, a dominoes and cribbage set, and more.

Her gourds are currently featured at galleries in Idaho, Arizona and San Carlos, Mexico, and she hopes to start getting more of her work out there, partly because all her gourds (she has made 203 in total) are crowding her house, she said. Her art has also been featured



Terilyn Krueger has carved and painted more than 200 gourds to create such objects as masks, drums, pitchers, purses, bird feeders, dominoes and cribbage sets. Port Ludlow bay forms a backdrop for her artwork. Photos by Jacqueline Allison



Krueger's gourd art features intense colors and images from nature.



Gourds painted by Terilyn Krueger of Port Ludlow have been featured at galleries on the Olympic Peninsula and in Idaho, Arizona and Mexico.

*"Typically when I get started, I'm just lit and I just keep going. There's not enough hours in the day when you really get inspired."*



## Terilyn Krueger

GOURD ARTIST

at galleries on the Olympic Peninsula.

"I have a lot of raw gourds and churning ideas," said Krueger, who is currently working on her first "puppet," a bird transformation mask that is tradition of tribes from the Northwest coast.

At age 45, Krueger discovered gourding at an art show in Arizona, a place where gourders flock for raw gourds and embellishments. Krueger is to attend the largest gourd festival in the country, taking place at the Wuertz Gourd Farm in Casa Grande, Arizona, and the three-week Tucson Gem, Mineral and Fossil Showcase; both events take place in February.

An embellishment as much as a gourd might inspire her to start a piece, she said. She once bought a fly from a fly-fishing store to place above a painted salmon's outstretched tongue on a gourd.

For painting, ink dyes work well to saturate the gourd's thick skin and give intense color, she said. To apply the ink, she uses the same heat gun she uses to remove varnish from her boat. She enjoys the more transparent look of watercolors over acrylic paints.

"That's what really captured my interest was the type of stain or ink that allows you to see the gourd through," she said. "The gourd really speaks."

The region she resides in and the time of year stimulate her creativity, said Krueger, who has lived in the Southwest and

in Mexico, where she learned from master carvers.

Krueger's husband, Joseph Carol Krueger, who died on June 20, shared with her his talents as an orthopedic surgeon and artist.

While making a pitcher, she used a screw to pin a handle to a gourd, a technique a surgeon might use to fix a hip, she said.

A stain glass artist, weaver and knitter, Joseph Krueger created Tenerife weaving for his wife's gourds. "We had a fabulous collaboration," she said.

Gourds are typically inedible and reserved for decorative purposes. They require artists to wear respirators while working on them because of the mold on

the inside and outside of the gourd, Krueger said.

Scooping the seeds out of a gourd is not as easy as a pumpkin, she noted.

Sometimes, she works all

night, moving to her small trailer to be noisy.

"Typically when I get started, I'm just lit and I just keep going," she said. "There's not enough hours in the day when you really get inspired."

*"I have a lot of raw gourds and churning ideas."*

## Terilyn Krueger

GOURD ARTIST





Port Ludlow Artists' League

# GALLERY

[View this email in your browser](#)

**ARTIST RECEPTION**  
4-5 Sound Bank, 4-6 PM next door at the [Gallery](#)  
WEDNESDAY, September 14

## Featuring: *Patricia Webber*

Her photography captures vibrant colors, creative geometrics, and ethereal images.

"All of my photography is 'point & shoot', which means I don't electronically enhance the images to create color or special effects," explains Webber. "I've been known to spend a long time outdoors in our wonderful Pacific Northwest rain, waiting for the right light to illuminate a water droplet. It's all worth it when art happens."



In addition to photography, she writes

creative nonfiction short stories, has taught calligraphy at the college level, performed in chamber ensembles and symphony orchestras as a bassoonist, and served on the board of directors of a symphony orchestra.

Read more about her work on our [website](#).

See her work at the Sound Community Bank and meet her in person while enjoying beverages and nibbles at the reception next door.



## PLPA Season Opener Features Countertenor

It's the Opening Night Champagne Reception for Port Ludlow Performing Arts' (PLPA) 26<sup>th</sup> year. On **Saturday, September 24**, the evening will feature internationally acclaimed countertenor Terry Barber who is known for his extraordinary range both vocally and stylistically. Performing classical and popular music, he has been featured on some of the world's most storied stages and his voice has appeared on every major label.

Barber has been a soloist for the Metropolitan Opera, Carnegie Hall, London's Queen Elizabeth Hall, and Moscow's Svetlanova Hall, to name a few. He is classically trained with an unusually rich, versatile voice. His Port Ludlow program, "The Many Voices of Terry Barber," will be an entertaining exploration through light musical theater, classical, and popular works.

Tickets for the season opener are currently on sale at the Bay Club, 120 Spinnaker Way. Tickets for all 2016-17 performances are available for purchase online at [portludlowperformingarts.com](http://portludlowperformingarts.com). Bay Club doors open at 6:15 p.m. for subscribers, benefactors, and volunteers to preselect seats; general admission ticket holders are welcome at 6:30 p.m. and the concert will begin at 7:30 p.m. The wine bar is open for service before the concert and during intermission.

While enjoying a complimentary glass of champagne, you may view the exhibit of art by Larry Davidson, digital painter. Each image is developed in computer graphic software, using many tools to paint parts of the image, while other portions are compiled from selected photographic extractions. Images are then printed on metal or high luster art paper as the final painting.

## Collage artist talks technique in Ludlow

The Port Ludlow Artists' League welcomes collage artist Susan Miller to talk about the art of collage at its meeting at 1 p.m. on Wednesday, Sept. 21 at the Beach Club, 121 Marina View Dr.

In her presentation "Collage: Beyond Cut and Paste," Miller is to talk about incorporating collage into watercolor and acrylic paintings. A Puget Sound-area resident since 1988, Miller is an elected member of Women Painters of Washington, and a

signature member of the National Collage Society and the Northwest Watercolor Society.

Guests are welcome to attend this monthly meeting and social time. A guest fee of \$5 may be paid for an individual meeting or dues of \$30 provide a year of programs for both art lovers and artists of all levels. For more information, contact Patricia Webber, program chair, at [2pw@gmx.com](mailto:2pw@gmx.com).





Port Ludlow Artists' League

# GALLERY

[View this email in your browser](#)

**ARTIST RECEPTION**  
4-5 Sound Bank, 4-6 PM next door at the [Gallery](#)  
WEDNESDAY, October 12

**Featuring: Jewelry Artists of the Port Ludlow Artists' League presenting collections of their three-dimensional wearable art**

- *Silversmiths Reggie Kleweno and Li Ding-Salopek also do their own lapidary work to create one-of-a-kind pieces;*
- *Sharon Zabloutney and Lee Dunn are lamp-workers who, with torch and glass rods, create the individual beads featured in their jewelry;*
- *James Ferrara elevates river rock to a new height with his wire-wrapped pieces;*
- *Yerda Ferrara uses fiber combined with other mediums to fashion her art jewelry;*



James & Yerda Ferrara



Ginny Ford

- *Ginny Ford's jewelry features copper, bronze and silver with torch-fired enameling;*
- *Mary Lynn Laker molds PMC (precious metal clay) to form components for her pieces;*
- *Linda Henderson's jewelry combines unique glass and crystals from her travels to exotic places; and,*
- *Judy Danberg favors beads with a history in her jewelry.*



PLAL 2016 Challenge

# Seeing Music

October 19



Marla Stezhko's songbird watercolor. What could be more musical?



Leonid Afremov. "Each of my artworks reflects my feelings, sensitivity, passion, and the music from my soul."



Paul Klee, virtuoso violinist and painter, often transformed music and drama into visual expression.



Debra Hurd: Abstract piano keyboard.



Pamela Marshall's paintings and collage are influenced by music and movement.



Wassily Kandinsky was fascinated with the power and emotion of music and brought those same feelings to his art.



Lennon Michalski: Lesson in Seeing Music



## "Seeing Music" is Artists' League's Challenge

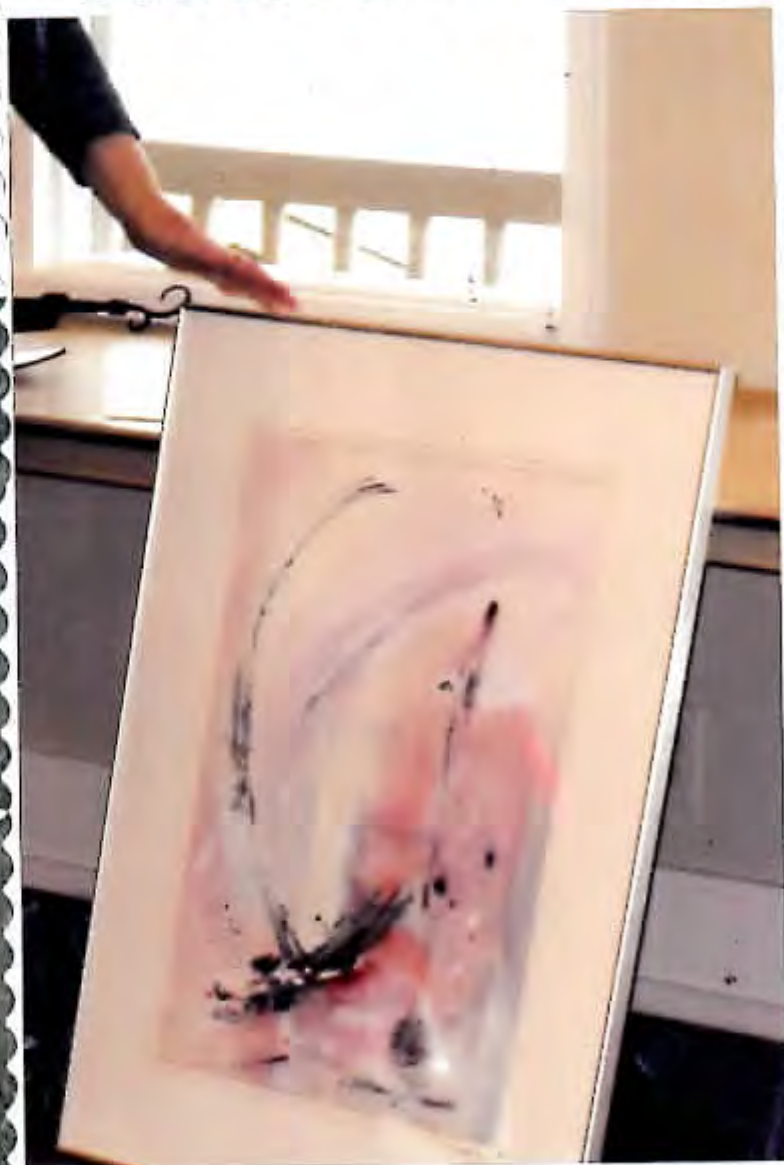
The *métiers* of music and visual art converge at the next Port Ludlow Artists' League General Meeting and program on **Wednesday, October 19**, at 1:00 p.m. at the Beach Club.

"Seeing Music" is the theme of this year's art challenge in which artists create works inspired by any aspect of music. League members work in their chosen medium - watercolor, pastels, oils, pottery, acrylics, mixed media, fabric, photography - and follow their creativity to produce works ranging from abstract to realistic.

Artists bring their artwork to the program meeting to be shared and celebrated. Prizes are awarded in various categories, including "best of show."

*Artists' League continued from previous page*

Guests are welcome to attend the monthly meeting and social time. A guest fee of \$5 may be paid for an individual meeting or dues of \$30 will provide a year of inspiring programs for both art lovers and artists of all levels. For more information, contact Patricia Webber, program chair at [2pw@gmx.com](mailto:2pw@gmx.com).

















*Eidolon continued from previous page*

Joe now has a Pro Tools HD3 recording studio in their home where he has produced all of AE's recordings.

Gloria Russell-Baker's generous donation has enabled us to bring this musical feast to Port Ludlow. Tickets are available for purchase now online at [portludlowperformingarts.com](http://portludlowperformingarts.com). Bay Club doors open at 6:15 p.m. for subscribers and benefactors to select seats; general admission ticket holders will be welcomed at 6:30 p.m. The concert will begin at 7:30 p.m.

While enjoying beverages from the no-host bar, you are invited to enjoy art from two featured artists for this concert. Carol Durbin feels her art is a reflection of her love for adventure. After she chooses a subject, she lets her mind and inner feelings run free. Carol works primarily with acrylics and *sumi* ink.



## Acoustic Eidolon

by Peggy Welker, Guest Writer



*Acoustic Eidolon: Hannah Alkire and Joe Scott.*

Provided photo

If you want to enjoy some of the "most powerful and intriguing music on the scene today" get your tickets now to hear *Acoustic Eidolon* on **Saturday, October 22, 7:30 p.m.** at the Bay Club. This unique sound is created by combining the talents of Hannah Alkire, a *tour de force* in cello performance and Joe Scott who performs on

the *guitjo*, his own custom-designed instrument that is a guitar with 2 necks and 14 strings. *USA Today* described the *guitjo* as a "beautiful harp-like sounding instrument... like nothing we've ever heard before."

By combining these two beautiful instruments, Joe and Hannah have captivated audiences around the world with their "new acoustic" sound that is a blend of Celtic, Americana, World, and Flamenco musical influences. What started as a musical journey between kindred spirits blossomed into their marriage in 2001.







## Art reception

PORT LUDLOW — The Port Ludlow Artists' League Gallery Artist of the Month show this month will feature league members' interpretations of the theme "seeing music."

The reception for the show at Sound Community Bank will be from 4 p.m. to 5 p.m. Wednesday at the bank at 9500 Oak Bay Road in Port Ludlow, with beverages and snacks at the gallery next door from 4 p.m. to 6 p.m.

Visitors will be able to meet the artists while perusing their work.

The reception will be followed by an Arts and Crafts Show from 10 a.m. to 4 p.m. Saturday at the Bay Club at 120 Spinnaker Place.

The "Seeing Music" art challenge inspired the artists to portray any aspect of music, thus combining music through visual art.

League members have produced pieces ranging from abstract to realistic. Mediums included water-

colors, pastels, oils, pottery, acrylics, mixed media, fabric and photography.

The entries were juried during the league's October meeting, with prizes awarded by the general membership.

(J) — TUESDAY, NOVEMBER 8, 2016

*Peninsula Daily News  
and KOMO News*

## And Speaking of the Arts . . .

*by Judy Danberg, Artists' League President*

Friends and fans of the Port Ludlow Artists' League are in for a treat during November. The Artist of the Month show at Sound Community Bank in Port Ludlow will feature a regalia of artists depicting their interpretations of the challenge "Seeing Music."

The entries were juried in the October meeting and prizes awarded by the general membership of the League.

Port Ludlow Voice

*Artists' League continued from previous page*

The "Seeing Music" art challenge inspired the artists to portray any aspect of music, thus combining music through visual art. League members worked their magic and creativity to produce pieces ranging from abstract to realistic. Mediums included watercolors, pastels, oils, pottery, acrylics, mixed media, fabric, and photography. The works are truly amazing and present a wide spectrum of talent.

The invitation is extended to all to meet the artists and see their "music" at the Second Wednesday Reception on **Wednesday, November 9**. The show can be seen from 4:00 - 5:00 p.m. in the lobby of Sound Community Bank, corner of Oak Bay Road and Osprey Ridge. The fun continues next door at the League Gallery from 4:00 - 6:00 p.m. where additional art from the League's artists will be on display. Information can be obtained by contacting League President, Judy Danberg at 360-473-7999 or by email at [shortline@cablespeed.com](mailto:shortline@cablespeed.com).



## A Community of Art

by Judy Danberg, Artists' League Correspondent

We are a small community but not without the finer things in life – good food, beautiful surroundings, concerts to please our hearts and visual art for our souls. Artists gravitate to places that are inspiring and have people that appreciate their endeavors. In Port Ludlow there are many ways to share in our local artists' visions by visiting businesses that proudly support those artists. In ever-changing shows, individual artists display their artwork in many of the businesses which form our small but vital commerce center.

The Inn At Port Ludlow partners with the Artists' League by hosting two-month shows on their walls for their guests and the community to enjoy. November's and December's theme will be "A Cozy Winter" starting Monday, November 7.

Other local merchants are on a three-month rotation of art and this last quarter of the year will include: Active Life Physical Therapy with Jeanne Joseph's pen and pencil graphics; The Beach Club Gallery Room has Mary Lynn Laker's photography and encaustic prints; Coldwell Banker Real Estate with Gail Larson's collages and acrylic paintings; Mats Mats Chiropractic displays Wanda Mawhinney's oil and cold-wax abstract paintings; and, Olympic Gateway Visitors Center features Cathy Thomas with watercolor paintings of local scenes.

The Bay Club Gallery Hall changes monthly. Coming shows are Group Abstracts in November, and the photography of Alan Ahtow in December.

The Port Ludlow Artists' League Gallery opens its Holiday Shoppe in November and December for those one-of-a-kind gifts that make gift-giving fun, local and personal. A bonus is avoiding crowded malls. The gallery is open Tuesdays through Saturdays, 12:00 – 4:00 p.m., and is staffed by the artists themselves.

## Theresa Stirling Demonstrates Photo-Encaustic Art

The Port Ludlow Artists' League (PLAL) welcomes Theresa Stirling to demonstrate her photo-encaustic art process on Wednesday, November 16 at Port Ludlow's Beach Club, 1:00 p.m.

Stirling's unique process begins with a specially printed photographic image attached to a substrate; she then paints or sculpts thin layers of transparent beeswax and oil paint over the image. Each layer is fused with an industrial blowtorch, which requires some finesse. The result is luminous and powerful!

A Northwest native, Stirling's home and studio are on a small farm along the Hood Canal, where she gleans inspiration from nature. Her work is shown around the Pacific Northwest in a mix of permanent gallery shows and steady private commissions. Learn more at [theresastirling.com](http://theresastirling.com).

Guests are welcome to attend PLAL's monthly meeting and social time. A guest fee of \$5 may be paid for an individual meeting. For more information, contact Patricia Webber, PLAL program chair, at [2pw@gmx.com](mailto:2pw@gmx.com)





**ARTIST RECEPTION**  
4-5 Sound Bank, 4-6 PM next door at the [Gallery](#)  
WEDNESDAY, November 9

## Featuring: Members' Challenge: "Seeing Music"

The "Seeing Music" art challenge inspired the artists to portray any aspect of music, thus combining music through visual art. League members worked their magic and creativity to produce pieces ranging from abstract to realistic. Mediums included watercolors, pastels, oils, pottery, acrylics, mixed media, fabric, and photography.

Meet the artists and enjoy their work at the Sound Community Bank, then and them in person while sampling beverages and nibbles at the reception next door.









## IN THE ARTS

### Stirling demonstrates photo-encaustic art

The Port Ludlow Artists' League welcomes Theresa Stirling to demonstrate her photo-encaustic art process at 1 p.m. Wednesday, Nov. 16 at the Beach Club, 121 Marina View Drive, Port Ludlow.

Stirling's process begins with a specially printed photographic image, which she adheres to a substrate. She then paints thin layers of transparent beeswax and oil paint over the image. Each layer is fused with an industrial blowtorch.

A Northwest native, Stirling spent her childhood steeped in nature, which continues to influence and inspire her work, she says. Her home and studio are on a small farm along Hood Canal, where she gleans inspiration from wildlife, beaches, forests and mountains, she says. She earned a Bachelor of Art degree from the University of Washington and continues to refine her skills and explore new applications of her art.

Her work is shown around the Pacific Northwest in a mix of permanent gallery shows and private commissions.

Guests are welcome to attend this monthly meeting and social time. A guest fee of \$5 may be paid for an individual meeting, or dues of \$30 provide a year of programs for both art lovers and artists of all levels.





























