

# 2012

## JANUARY

### Have a Happy and Artful New Year!

What do you do to brighten the winter and welcome the New Year? You make art! The Port Ludlow Artists' League's group show, "Winter Impressions" will continue to hang in the lobby of Columbia Bank and The Inn At Port Ludlow. The participating artists each have a unique vision of the winter season's beauty in all its majesty—scenes to inspire and contemplate, to warm the heart or to lighten the soul with a chuckle during this chilly time of year. Join the artists for their "First Friday Reception," **Friday, January 6**, 4:00 – 5:00 p.m., in the lobby of Columbia Bank and 5:00 – 6:00 p.m. in the Gallery adjacent to the Bank. It's a good way to stretch the holidays just a little bit longer, meet artists and friends and take in a little cool beauty all at the same time! In addition to the group show, Port Ludlow's merchants are participating with even more artwork hanging in their offices. Drop in, wish them a "Happy New Year" and check out the wonderful art decorating their walls during January, February and March.

- Active Life Physical Therapy – Vince Binder
- Coldwell Banker – Winifred Whitfield
- Columbia Bank Conference Room – Jeanne Joseph
- Home Instead Senior Care – Branan Ward
- Mats Mats Chiropractic – Fran Bodman
- Port Hadlock Medical Clinic - Karen Pratt Riggen
- Port Ludlow Community Church - Karen Pratt Riggen
- Port Ludlow Golf Course – Gary Griswold

And, in participation with the Port Ludlow Arts Council, artists will be exhibiting at the following concerts:

- **Friday, January 20** – Virginia Moyer
- **Friday, February 17** – Jeanne Joseph
- **Saturday, March 10** – Barbara Adams
- **Saturday, April 14** – Bob Jamison

### Calling All Artists!

The Port Ludlow Artists' League (PLAL) meeting on **Wednesday, January 18** at 1:00 p.m. will be a participatory and fun-filled session on making greeting and gift cards, both for the Gallery and the men and women serving in our Armed Forces. A little friendly rivalry between artists prompts great inspiration ... or at least a lot of fun, with "arty" results on tiny little canvases. Wear your best painter's smocks, bring your own paints or assemblage materials and be prepared to get "down 'n' colorful!" Guests are welcome to attend this monthly meeting, social time and program in the Bay Club. A guest fee of \$5 will be collected for an individual meeting or dues of \$30 will provide a year of inspiring programs for art lovers and artists of all levels. More information can be obtained by contacting President Wanda Mawhinney

## FEBRUARY

### Who Was That Masked Man?

For that matter, who was the Phantom; or the Man in the Iron Mask; or any of those other guys whose faces have been hidden from the public eye in history as well as literature? And what has that got to do with Port Ludlow? Come to the Port Ludlow Artists' League (PLAL) meeting this February and find out! You will see an array of masks, beautiful or dramatic, serious or comedic, all done in answer to a challenge put forth by The Inn At Port Ludlow. The challenge to the

PLAL members was to create masks in the Mardi Gras tradition, which will then be displayed at The Inn during the month of March. Over the years The Inn has partnered with the Artists' League in providing a venue for displaying the works of our local artists; and so, the League was quick to take the bait! At the February meeting, the masks will be presented for the first time. Members and guests will vote on them for various categories such as funniest, most beautiful, best of show or other such dubious honors. As with past "challenges," the artists go all out, resulting in an amazing exhibition of ingenuity, talent and beauty. And the cookies are great too! Guests are welcome to attend this monthly meeting, social time and program in the Bay Club on **Wednesday, February 15**, at 1:00 p.m. A guest fee of \$5 may be paid for an individual meeting, or dues of \$30 will provide a year of inspiring programs for art lovers and artists of all levels. More information can be obtained by contacting President Wanda Mawhinney

### **PLAL's Artist of the Month**



**Coastal Village**



**Rain Cloud Forest Frog**

**Randy Radock**, known for his block prints, is February's Artist of the Month, and will have an exhibit of his work on display at the Columbia Bank for the month. Radock, and his wife Sallie, retired here in the Northwest in 1998, taking up block carving and printing as a hobby. The hobby escalated into a passion and a new career was started.

Radock's block prints are inspired from nature, Native American art forms, and an outgrowth of the couple's travels to exotic places. Each piece is unique, individually hand inked with each print signed and numbered, part of a limited edition, never reproduced or computer generated. Radock prints on various materials, including tapa cloth, slate, papyrus, and handmade papers. His prints have been published in arts and literary publications, and displayed in Northwest galleries such as Northwinds, Port Townsend, Lake Crescent Lodge in the Olympic National Park, and here in Port Ludlow's Artists' League Gallery. Radock is pleased to have national and international collectors of his prints. His work can be seen on his website at [www.randstarimages.com](http://www.randstarimages.com).

## **MARCH**

### **Musitheatrical Show: A New**

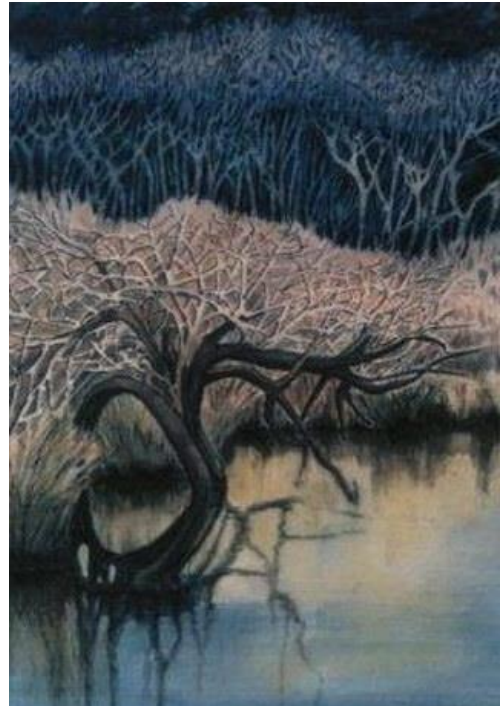
## Entertainment Experience

Doors open at 7:00 p.m. and you are urged to arrive then in order to select seats to your liking. Once your seats are secured, enjoy beverages in the Great Room as well as watercolor and ink renderings of local Port Ludlow scenes by Barbara Adams of the Artists' League. She began using watercolor pencils and pen and ink in 2004. Her paintings in acrylics, watercolor and mixed media have been accepted in juried art shows at Northwind Arts Center in Port Townsend, where she won a Merit Award in 2010.

## Port Ludlow Artist's League Artist of the Month

As the Port Ludlow Artist of the Month, **Elaine Chandler, print-maker**, is being honored at the **PLAL First Friday Reception, March 2, from 4:00 to 5:00 p.m.** held at Columbia Bank, Oak Bay Road, Port Ludlow, and at the Artists' Gallery adjacent to the bank, from **5:00 to 6:00 p.m.** Chandler's artwork will hang at the Bank during the month of March. Please join our members and friends at the opening this outstanding exhibit of Chandler's works.

Chandler has been a professional printmaker for 29 years. She studied Japanese woodblock printmaking techniques (*Moku Hanga*) with Akira Kurosaki of Kyoto, Japan and Jack McLarty of the Pacific NW College of Art in Portland, Oregon. Chandler's extensive printmaking techniques include teaching Japanese Woodcutting workshops at PNCA, the Creative Arts Community at Menucha, the University of Oregon, and the Oregon College of Arts and Crafts.



She became a member of the original NW Print Council in 1982 and served on the Board of Directors until 1991. Chandler is a member of Port Ludlow Art League and Print Arts NW, and currently has work at the Rental Sales Gallery of the Portland Art Museum and the Hoffman Gallery of the OCAC in Portland. Her work has been exhibited nationally and internationally and is included in the public collections of Alaska Museum of Art, Bonneville Power Administration, Coos Art Museum, University of Oregon Museum of Art, IBM Corporation, Intel Corporation, Komatsu Incorporated, Mt Hood Community College, Okha America, Portland Community College, the Visual Chronicle of Portland, Westinghouse Electric Corporation, and Salem Hospital, as well as numerous private collections.

## Wild 'n Crazy Critters Invade Port Ludlow!



## Wild 'n Crazy Critters Invade Port Ludlow!



Do you ever have dreams wherein weird and strange creatures dance through your head? Come to the Port Ludlow Artists' League and see one woman's dream figures take shape. On **March 21<sup>st</sup>** the League meeting will feature **Kathy Dexter**, a Port Townsend artist who takes beads into another whole dimension. Her collection of beaded dolls and "critters" is ever-expanding as she works with beads, charms and wire to create these small works of art. "I'm never quite sure what the end product will be – they just grow and take on lives of their own," says Dexter of her dolls and animals. Each piece is sewn and/or woven (no glue here), and consists of hundreds upon hundreds of individual beads and charms. Some of her masterpieces are even woven around your ordinary, garden-variety sticks!

Dexter, a Washington native, was encouraged as a youngster to try new things, with the idea that "everything was art, and we are all artists." She teaches beading classes around the Peninsula, and works at The Bead Shop in Port Townsend to feed her beading habit! Some of her bead pieces were featured in the book, *Hot Flash! A Celebration*.

## APRIL

### Cover Artist, Gary Griswold

Featured on the front cover of this month's *Voice* is a watercolor painting by local artist Gary Griswold. A Giclée, a high quality print, of this painting will be available at the Port Ludlow Artists' League seventh annual Scholarship Auction, **Friday and Saturday, April 13 and 14**, at the Bay Club



Griswold's watercolor work features scenes of the Pacific Northwest, classic boats and other marine subjects. He has been a serious painter since the 1980s and is a member of the Northwest Watercolor Society and a Board member of the Puget Sound Group of Northwest Painters. He attended San Francisco Art Institute, Los Angeles City College and UCLA (University of California, Los Angeles), and has studied with Jerry Stitt, John Ringen and Deane Lemley. Artwork by Griswold can be found at the Port Ludlow Artists' League Gallery, located in the Upper Village next door to Columbia Bank. He has been teaching at The Port Townsend School of Maritime Art, which offers classes for adults aboard boats and on shore in historic waterfront buildings.

## PLAL Artists of the Month

For the month of April, the Port Ludlow Artists' League is pleased to showcase the artwork of both Carol Avoy Durbin and Wanda Mawhinney. Their bold and colorful canvases will hang on the walls of Columbia Bank for the entire month. Durbin's greatest influence has been her work with sensei (teachers) in Japan. She's worked her Asian influence into textiles, pottery and abstracts as well as her work in the traditional sumi-e and ikebana. Her works show a depth of tranquility and calm; and her use of colors is sometimes unusual, but still keeping in the oriental tradition.



Recent travels through the high deserts of our western states have inspired Durbin to try to recapture these landscapes in an impressionistic style, a different and new focus for her paintings. Durbin has been an active member of the League since moving to Port Ludlow. Mawhinney paints intuitively, with no preconceived plan when she begins a painting, allowing each painting to take its own form. "I'm often surprised at the outcome. That's a big part of the fun of painting for me," says Mawhinney. Using striking colors, her oils evoke a sense of time and space and draw one into the drama of the canvas. Her latest works feature studies on ponds and grasses. A native of Idaho, she comes to Port Ludlow by way of many years in Arizona.

## PLAL April Meeting Hosts Mark Henthorn

Port Townsend artist Mark Henthorn will be the guest speaker at the April 18<sup>th</sup> meeting of the Port Ludlow Artists' League. Henthorn, known for his work in both pastels and oils, comes to the artist's realm from a background as an architect and illustrator.



Spanning over 30 years, Henthorn hungered for a more artistic expression before beginning a gradual [retirement](#) from architecture to concentrate on art. Since that time, he has gained increasing success as a landscape artist, with work shown in galleries and private collections throughout the U.S.

"My art begins with a reverence for nature, continues with the process of interpreting and translating it in a personal way, and ends with my particular [vision](#) being appreciated by others," says Henthorn. His work concentrates primarily on the landscape of the American west, but also incorporates other meaningful places from his travels throughout the world. Henthorn has an ongoing fascination with the quality of light, especially on water and foliage, and for the quiet serenity found particularly at the magic times of dawn and dusk.

## Seventh Annual Silent Art Auction to help Chimacum Students

The Port Ludlow Artists' League is sponsoring its seventh annual Scholarship Auction **Friday & Saturday, April 13 & 14**, at the Bay Club.

As in previous years, a variety of art-related items will be offered, with as many as 100 different items including original paintings in oils, watercolors and pastels; prints, photographs, pottery, tiles, textiles, jewelry, baskets of art supplies, tuition to local art classes, and greeting cards done by League artists. All works donated are from members of the Port Ludlow Artists League and other local artists.

The silent auction bidding starts at the opening, 12:00 p.m. on Friday, April 13th and runs through 7:00 p.m. The Auction opens again on Saturday, April 14th, at 9:00 a.m. and bidding ends at 2:00 p.m. Winning bidders will be notified by telephone and may pick up their items at the Bay Club through 4:00 p.m. on Saturday. Refreshments will be served during the auction.

This year, visitors will be asked to vote for their favorite item being shown, and the winning selection will earn the “*best of show*,” award. Items will be featured on the Port Ludlow Artists’ League Facebook page for pre-auction viewing.

This is a wonderful opportunity to pick up artwork and art-related items by local artists, and at the same time, help college-bound Chimacum High School students. With generous community support, the League has been able to provide over \$15,000 of college scholarship money from previous auctions. Eighteen area students have been helped in their pursuit of a higher degree because of these contributions. For more information, or to donate an art related item or money for the scholarships, please contact Ginny Ford.

## **Early Start for The Bills at Cabaret**

Plan to see an exhibit of acrylics and pastels by Artists’ League member Kathy Constantine. She uses handcolored and hand-formed papers, metallic foils, computerdrawn or painted images, and more to create her artwork. Constantine is particularly drawn to texture, metallics, iridescent colors and abstract or impressionistic styles. Her work has been accepted into many juried shows, including the Best of the Northwest, Art Port Townsend and shows at Northwind Arts Center.

**MAY**

## **Marilyn Sandau’s Work Featured**

**Marilyn Sandau** is May’s Artist of the Month and will be honored by the Port Ludlow Artist’s League at their First Friday Reception on May 4<sup>th</sup> at Columbia Bank, Port Ludlow. Her works will hang at the bank during May, as well as the PAL Gallery adjacent to the bank.

Sandau moved to Port Townsend four years ago, after retiring from teaching Special Education for thirty-two years in Massachusetts. “I am not quite sure how I got into doing collage, but I have always been fascinated by color and composition.” Influenced by a Joseph Cornell exhibit in her college years, she began collage about ten years ago, and became more focused on it after her recent retirement. Generally color-driven rather than thematic, her canvases become “...magical things, where the pieces just come together until it feels right. I often become completely lost in the world I am creating.” Prompted by the *Small Expressions* show at

Northwind, she has been working on smaller pieces as well as doing collages in series or groupings.

Sandau's studio is her master bedroom, "... since it is larger than the others and gets terrific eastern and southern light. Who needs a big sunny room to sleep in?" Sandau's pieces have been in hung in various galleries from Vermont and Massachusetts, to local galleries in Port Townsend, Port Ludlow and Sequim.

League members and Port Ludlow friends are invited to view the Marilyn Sandau's exhibit at the **First Friday Reception** held on **May 4<sup>th</sup>**, from **4:00-5:00 p.m.** in the lobby of Columbia Bank, on Oak Bay Road, and from **5:00-6:00 p.m.** in the Art Gallery adjacent to the bank.

In addition to Sandau's artwork at the bank, some of our local and loyal merchants will be displaying artwork by other League members. Stop by, say "Hi!" and take a look at other fine art:

*Active Life Physical Therapy* - Gary Griswold  
*Coldwell Banker* - Jeanne Joseph  
*Columbia Bank (Conference Room)* - Branan Ward  
*Home Instead* - Gary Griswold  
*Mats Mats Chiropractic* - Bonnie Stephan  
*Port Hadlock Medical Clinic* - Betty Harmon  
*Port Ludlow Community Church* - Barbara Adams  
*Port Ludlow Golf Course* - Joy Herring  
*Gateway Visitor's Center* - Bonnie Stephan

## **In The Gallery — A Visual Epicurean Delight!**

Port Ludlow Artists' League Gallery's May Exhibition "**You Art What You Eat**" produced not one wall, but four walls of delicious looking edibles, interesting eateries, comical sculpting and collage, beautiful jewelry, wood works, and wonderful cards. This month we will have our reception on the second **Wednesday, June 13<sup>th</sup>**, from **4-5 p.m. in Columbia Bank and 5-6 p.m. in the Gallery next door**. A cordial invitation is extended to all in the community. If you missed the opening of our "You Art What You Eat," this is your chance to view it and meet the artists as well as enjoy some "real eats".

## **PLAL May Meeting**

Port Ludlow Artists' League is pleased to host artist **Gail Lawson**, at their **May 16<sup>th</sup>** meeting, held at the **Bay Club**. Lawson works in water-colors, and oils but is best known for her collages.



Lawson's formal education includes the Cornish Art Institute as well as community colleges and workshops with local and nationally recognized artists. In 1996 she received Signature

Membership in the National Collage Society and is an active member of the Northwest Collage Society. She is also a member of Sequim Arts and the Northwest Watercolor Society. She has received awards in collage, water media and oils

Lawson, from an early age, has always liked to create and turns to nature as her major source of inspiration. She commits her vision in the abstract, and uses nature's colors for her palette. She has found the Collage Society's various "challenges" exciting; one such challenge for the *Cancer Lifeline* was to visually portrait poetry. During the showing of the completed pieces, a grandmother was moved by Lawson's collage which reminded the woman of her granddaughter's fight with cancer. "Having someone relate to your work in such a manner makes your work even more meaningful. Challenges get you out of your comfort zone and inspire you in new ways," says Lawson.



## Amazing Things Are Happening!

The Artists' League will have a new display for May and June themed "Flowers." With everything in full bloom, we are eager to see the work of this talented and committed group. Please stop by to see the displays (all for purchase). Maybe you'll find just the thing to celebrate Mother's Day

## JUNE

### Port Ludlow Artists' League Features Sara Downs Bobanick

Watercolor artist, **Sara Downs Bobanick**, is the League's June Artist of the Month, and her works will be showcased in the lobby of Columbia Bank, Oak Bay Road, with a reception, **June 13<sup>th</sup>**.

Bobanick divides her time between Port Ludlow and Tucson, AZ. In both places she is an avid hiker, and cyclist, and she says her travels take her to the most beautiful parts of the U.S. Both the Southwest and the Northwest give her inspiration in much the same way – friends, gardens, flowers, rain, sunshine, they all triggers ideas. "I see paintings and shapes in everything," says Bobanick. Whether in the Southwest or the Northwest, her colors are strong and vibrant, with many of her paintings leaning towards impressionism.



This past winter Bobanick discovered digital painting, a new art-form where she can create in a very different way. She started the process with lots of color but is now leaning toward the look of charcoal (without the mess!) with just a spot of color. "It's exciting to be able to create in this way, and I am having a lot of fun with this constantly evolving media." She will have both types of paintings on exhibit this summer in the Port Ludlow Area.

--	--



## **Encaustic Artist Carrie Goller Speaks at Artists' League**

The Port Ludlow Artists' League is pleased to have Carrie Goller as speaker and demonstrator at their June 20<sup>th</sup> meeting. A Pacific Northwest native, Goller, recalls being advised as a child to pursue a career in fine art, but believes that her battle with breast cancer provided the stimulus for her to become a serious and dedicated artist. "Art has become a necessity for me. It's both work and play - exhilarating yet restorative. It's where I find balance," states Goller.

Goller is lured by simple, yet sensuous organic forms and the intoxicating realm of vibrant colors, shapes and textures found in nature. She transitions easily within a wide range of genres and media, including oils, encaustic (molten pigmented beeswax), watercolors, pastels and charcoal. Although she is experimental, Goller gravitates toward the classical and asserts that there is always much more to observe and learn. The artist's sincere approach to subject matter can be evidenced from her tender, still-life portrayals, along with a passion for rendering portraiture from vintage photographs, working from damaged photos as small as 2"x3."

Nine galleries in Port Townsend, Poulsbo and Bainbridge showcase Goller's work, which is in both U.S. and international collections. Additionally, Goller is one of 500 world-wide signature members juried into Artists for Conservation Foundation, a non-profit, international organization dedicated to the celebration and preservation of the natural world.

## **Festival By The Bay Alert!**

Back by popular demand is the Port Ludlow Artists' League Show and Sale! Held in the old Harbormaster Restaurant during the Festival By The Bay, the show will involve 31 artists displaying their talents in various mediums, including watercolors, oils, block prints, glass, collage, photography, ceramics, silk flowers, jewelry, gourds, and various other disciplines.

The show will open on **Friday, July 27**, at noon and run until 8:00 p.m., with a Preview Reception from 5:00 to 7:00 p.m. The show continues on **Saturday, July 28** from 10:00 a.m. to 8:00 p.m. and **Sunday, July 29** from 10:00 a.m. to 3:00 p.m. There will be scheduled demonstrations by Gary Griswold, watercolorist, and Sallie and Randy Radock, block printers. A placard at the Harbormaster door will list the times of the demonstrations.

Plan your visit and join the fun of a festival and the awe of an art walk, all in one delicious, beautiful and outstanding weekend!

## **Hot Stuff at the PL Artists' League Gallery and Meeting!**

**July** is the beginning of a sizzling summer for the Artists' League! Kicking off the month will be the "**Generational Interaction**" display in the PL Artists' League Gallery, adjacent to **Columbia Bank on Oak Bay Road, Port Ludlow**. Artists will be displaying their own works along side a grandchild's or child's work, a sort of talents "paid forward!" How many of us have children or grandchildren who, with a little encouragement, are destined to be great artists? This show will be about the progression of talent from one generation to the next.

In addition, **Art Fest at the Bank**, will feature “**Inspirations of Summer Time**” by a variety of our League artists portraying their visions and versions of summer’s bounties. The show will run through July with a **Second Wednesday Reception on July 11<sup>th</sup>**, starting at **Columbia Bank from 4-5 pm**, and in the adjoining **Gallery from 5-6 pm**. Come, have a glass of wine, meet your favorite artists and see what they’ve been up!

## **PL Artists’ League July Meeting**

Snow wiped out our January meeting this year, so we’ve put away the snow shovels and dusted off our paintbrushes and will usher in sunny July by having a **fun-filled meeting making greeting and gift cards, both for the Gallery and for the men and women serving in our Armed Forces**. A little friendly rivalry between artists prompts great inspiration ... or at least a lot of fun, resulting in great art on tiny little canvases. Guests are welcome to participate in this monthly meeting, social time and program at the **Beach Club on Wednesday, July 18th, at 1:00 p.m.** A guest fee of \$5 may be paid for an individual meeting or annual dues.

## **AUGUST**

PLAL Artist of the Month

Karen Pratt Riggen, who divides her time between Port Ludlow and Paris, France, is the Artist of The Month with her stunning photographs hanging in August at Columbia Bank on Oak Bay Road. Her photographs cover a wide range of scenes, people, and animals from both France and locally here in Washington.

Riggen, who fell in love with Paris 43 years ago, moved there along with her two young children, where total immersion in the French language made all three bilingual. While the children are now grown, married and living in Washington, Riggen still spends eight months of the year in France with her husband joining her for four of those months. This fall, the Fifth Biennial Photograph Exhibit, a juried show in Paris, will include six of her photographs.

## **Roberta Cooper – Gourd Woman!**

Port Ludlow Artists’ League is pleased to have Roberta Cooper as speaker at their August 15<sup>th</sup> meeting. She will demonstrate the art of turning the “lowly gourd” into a beautiful work of art. With a background in jewelry design, Cooper has borrowed designs from her old sketch books and applied them to gourd art.



“I love putting seemingly unrelated materials in juxtaposition to each other—natural pine needles on the outside of a gourd and glitzy, shiny beads on the inside,” says Cooper. Objects of nature such as weeds with seed pods, red twig dogwood, or golden weeping willow fronds find a place on her creations. “When I am making gourd art I am totally ‘in the zone.’ I can get lost in my studio for hours which seem like only minutes. Tapping that inner well of creativity is so satisfying.”

Roberta Cooper has enjoyed many forms of creativity—gourd art, fiber arts, metal smithing, and copper enameling. She began first with silversmithing in 1974, and her jewelry was featured in shows and galleries, winning numerous awards in Texas. Cooper’s gourd art has been in a number of juried shows, including the December 2010 ‘Into The Woods,’ show and the “Small Expressions 9, A Juried Show of Small Format Artworks,” in March of 2011, both at Northwind Art Alliance, Port Townsend. She received a Merit Award and the People’s Choice Award for her “Eggplant Hourglass,” in the “Small Expressions 9.” Cooper’s gourds can be seen at both the League Gallery here in Port Ludlow and the Bluewater Artworks Gallery in Poulsbo.

## SEPTEMBER

### **The Jewels of Port Ludlow!**

September will be the first time that the Port Ludlow Artists’ League jewelers will collectively be the *Artist of the Month*. Hanging in Columbia Bank will be a wide range of talents and styles including silver smithing, lamp work bead artistry, and incredible uses of beads and gemstones for adornment and collecting.

Sharing the spotlight will be Janet Barnes, Beverly Cooper, Judy Danberg, Kathy Dexter, Lee Dunn, Ginny Ford, Linda Henderson, Reggie Kleweno, Mary Lynn Laker, Jodie Morris, and Sharon Zabloney, each with his or her own style, use of color and technique. This combination brings almost 75 years of experience to the world of jewelry! (How about a little early holiday shopping?)

### **Hot September Afternoon at the Artists’ League**

**Julie Abowitt** will be the featured speaker for the Port Ludlow Artists’ league at their **September 19<sup>th</sup>** meeting. Born and raised in New York City, she found her way to Port Townsend after stopping off in Santa Cruz, CA. and then Seattle where her career path included art coordinator for the Seattle School District, an activity director for an assisted living center; and an “artist in residence” for Washington state, naming a few of her diverse career “hats.”

Says Abowitt, “My art includes realistic, abstract, and non-representational images. Even my realistic images (the digital prints especially), have an abstract sensibility. ... Last summer, a woman ran up to me when she saw my images on exhibit, and said ‘I don’t usually like realistic art, but these are so abstract!’ She verbalized what I was doing unconsciously — and correctly defined my aesthetic proclivities.”

Abowitt’s choices of medium have included etchings, colored pencil, “art-to-wear,” figure drawings, and digital images. She will be sharing her knowledge and artistry of linotype at this meeting. “My art is an homage to all that’s bountiful.”

## OCTOBER

### **Latin-inspired Jazz with Parisian Roots**

Both before the concert and during intermission, visit the Port Ludlow Artists' League exhibit. Featured artist will be Chris Settle whose early interest was encouraged by his parents, Patti and Gary Settle.

Port Ludlow Golf Course Jeanne Joseph The Inn At Port Ludlow Sept/Oct "Nature" Exhibit, PLAL artists Stop in, say "Hi" and check out not only the artwork but also the services that these fine merchants provide for our community.

## Port Ludlow Artists' League Showcases Fran Bodman

"Mixed-up Media" is the theme of October's *Artist of the Month*, **Fran Bodman**. Her works include pastels, acrylics and paper collage, and will be featured during October in the lobby of Columbia Bank, Oak Bay Road.



Bodman has always been interested in art and as a child began her early art life with a few paint-by-number kits! She excelled at the craft in high school, progressing to the Art Institute and the American Academy of Art for a short career in commercial art. After pursuing sales, real estate, and a host of other unrelated jobs, she retired, returning to her early love by exploring stained glass, acrylics, and other mediums. One day, to her amazement, she found that she could do stylized portraits, in pastels, of all her friends, even strangers, and a new passion was born! Bodman's work can be seen at the Port Ludlow Gallery, the Beach Club, and the Resort at Port Ludlow.

## Paints Worth Their Weight in Gold!

Gold colors that is! **Barbara De Pirro** of **Golden Artist Colors, Inc.** will be the guest lecturer for the **Wednesday, October 17<sup>th</sup>** meeting of the Port Ludlow Artists' League.

Barbara De Pirro is a painter, sculptor, installation artist and educator, sponsored by Golden Artist Colors, Inc. She works in both two and three dimensions, translating and cross pollinating her concepts from one media to the other. Her expansive knowledge of acrylics, combined with her broad understanding of a full range of media, opens the door to vast possibilities. All of this, she generously shares with other artists in her workshops and lectures.

De Pirro's work has been commissioned and exhibited both nationally and internationally, and includes many private and corporate collections. She has completed numerous public art commissions, both interior and exterior, including Tacoma Art Museum, SpaceWorks Tacoma, Port Angeles Fine Art Center, Museum of Glass, Matzke Sculpture Park and CoCA Seattle. Additionally, her artwork and techniques have been published in articles, art publications and books. DePirro's website is: [www.depirro.com](http://www.depirro.com).

This informative workshop on Golden Artist Colors, Inc. is open to all artists, however, reservations are requested.

## NOVEMBER

### Port Ludlow Artists' League Welcomes Don Tiller

Taking the upcoming Thanksgiving holiday in mind, the November meeting will be held on the **fourth Wednesday** of the month, **November 28<sup>th</sup>**. **Don Tiller**, an artist from Port Townsend will be sharing his art and techniques with the League.

As a youth Tiller spent summers working on his uncle's ranch making hay and cultivating corn. Those memories resonate in his paintings: robust clouds float freely in pastel skies, trees with quaint personalities, and scattered fences lead you along the patchwork landscape. In 1997 Tiller moved from the Black Hills of South Dakota to Port Townsend, beginning his preparation for his entry into the full time pursuit of galleries and collectors. Together with his wife Jolene, a professional graphic designer and artist, they implemented their marketing plan. They were rewarded for their efforts in May of 2007 with a one man showing of his most recent works at the Gunnar Nordstrom Gallery in Kirkland WA. Acceptance into this major gallery opened the door to gallery representation across the U.S.

Tiller is intrigued with the imprint left on the landscape when touched by mankind. With bold colors and simple shapes, he interprets man's attempt to initiate order in nature: natural chaos provides interest balanced with geometric repetition. Sharing his enthusiasm and glazing techniques, Tiller teaches two/day workshops around the country that are as rewarding for him as they are for his students. The process begins with Tiller's sketchbook. It is filled with thumbnail size drawings to keep his ideas flowing. Many of these end up as paintings. Next is a chalk drawing on a black gessoed canvas or masonite panel he stretches or builds himself. When he starts applying acrylic paint he layers up to the chalk lines. Eventually, these lines are erased and the underlying black outline from the gesso is still visible. Softening edges by applying up to 20 layers of transparent glazes is what allows.

### Art Starts from the Floor Up!

Port Ludlow Artists' League presents **Jeanne Joseph** as November's *Artist of the Month*. On display in the lobby of Columbia Bank, Oak Bay Road, will be a selection of her works from the walls down to the floor. The League invites fellow artists, friends and the community in honoring her at their *Second Wednesday Reception* **November 14<sup>th</sup>** from **4:00-5:00 p.m.** in the bank lobby, and from **5:00-6:00 p.m.** in the Art Gallery adjacent to the bank.

Combining practicality with a love of drawing and painting, her first floor cloth was for their boat. Needing something to cover and protect the carpeted galley, a floor cloth that could be wiped clean solved the problem. She has, however, taken floor cloths to a whole new level, making them both artistic and colorful. The hardest part at first was convincing clients that a piece of artwork could be placed on the floor and walked on. Although she has become known for those signature floor cloths, Joseph's talent also extends to the walls with her pencil and ink drawings, as well as her recent foray into watercolors.



Coming from an artistic family that included a portrait artist, a master carver, and a maritime artist, Joseph is primarily self-taught. Fine details, movement, shading and light are all part of her works. "I love children and include them whenever possible," she says. She takes her watercolor pencils along on every vacation. Mostly, she loves doing commission. "It is always a joy for me to see my floor cloths or pencil drawings in someone's home. I try to capture the feeling of the home to create a marriage between style and art." She does, indeed, do that quite well!

## **DECEMBER**

### **The Artists' League Goes Vincent Van Gogh-ish!**

*"Starry, starry night.*

*Flaming flowers that brightly blaze, Swirling clouds in violet haze,*

*Reflect in Vincent's eyes of china blue.*

*Colors changing hue, morning field of amber grain,*

*Weathered faces lined in pain,*

*Are soothed beneath the artist's loving hand."*

Recognize those lyrics? That song is the theme for the exhibit of Port Ludlow Artists' League's December and January Group Show to be displayed in the Columbia Bank lobby. Each artist will present his or her own translation of the song *Starry, Starry Night* as an artistic tribute to Vincent Van Gogh.

The public is invited to the **Second Wednesday Reception** held on **December 14<sup>th</sup>** from **4:00-5:00 p.m.** in the lobby of Columbia Bank and from **5:00-6:00 p.m.** in the Art Gallery adjacent to the bank.

Don't forget, this would also be a great time to check out the gallery's "**Christmas Shoppe**" for one-of-a-kind gift items and wall art to complete your holiday shopping for those on your special list (or even for yourself if you've been good this year!)

## **The Cookie Monster Meets the PLAL!**

The Port Ludlow Artists' League will have a regular meeting on **Wednesday, December 19th** to install the 2013 board members. Come, meet the new roster of 2013's officers and give a hand to the great work done by the 2012 board.

Following the meeting there will be a cookie exchange and social hour. Each League member is asked to get out their best cookie recipes and bring one to one and a-half-dozen cookies to share, sample, and take home. The League will have ice cream to accompany any cookies deemed too delicious to take home!